

EASTSHIRE
NEW CAIRO



VIEWS INSPIRING LIFE

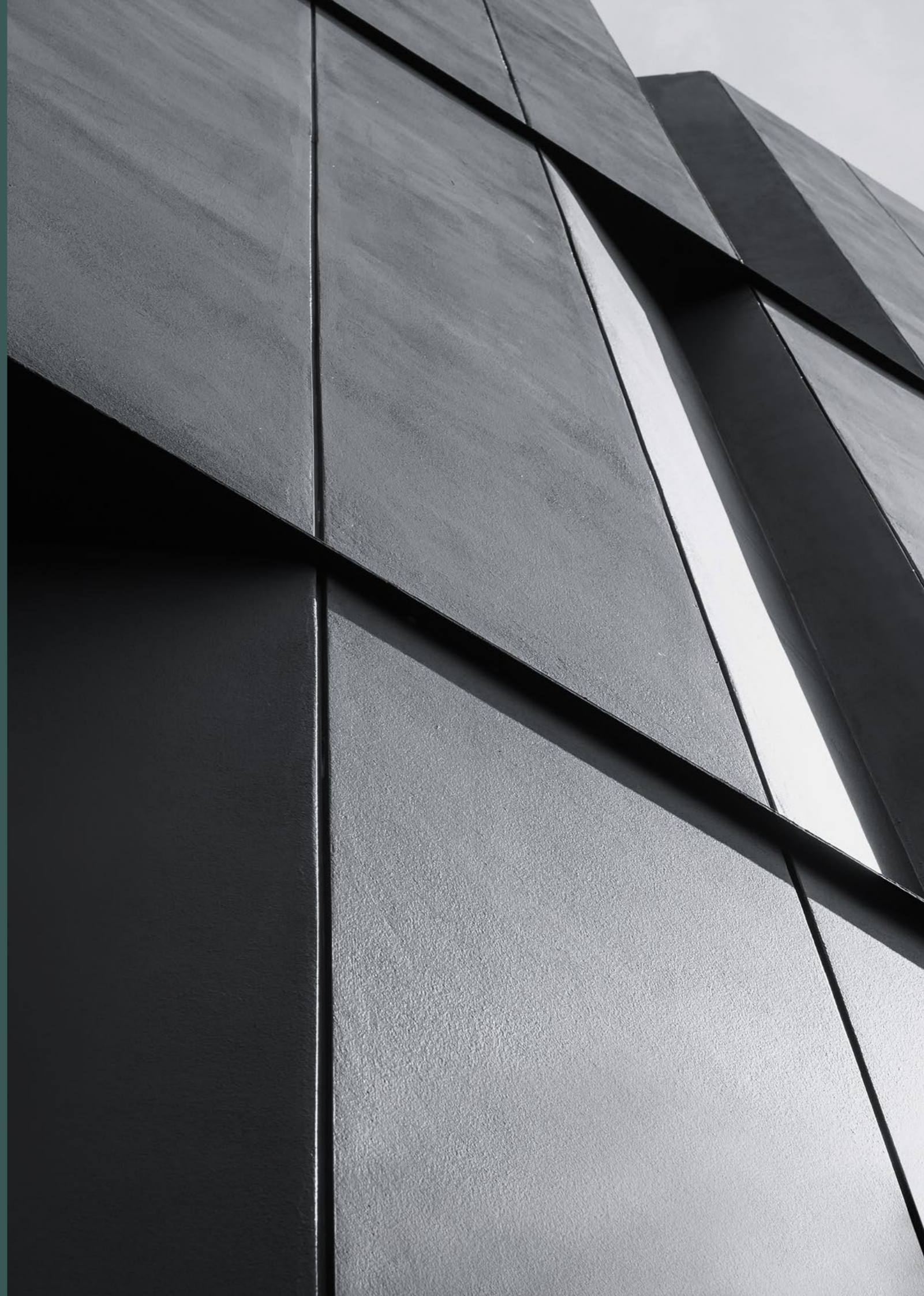


ABOUT AL QAMZI DEVELOPMENTS

Founded by Abdullah Al Qamzi in 1997 with a progressive vision that fuels transformative projects in the United Arab Emirates, Al Qamzi Group is a regional powerhouse with a trusted track-record of successes across varied domains where superior quality reigns supreme. With an eye on evolving opportunities and a commitment to expand its unique offerings to the world, Al Qamzi set foot in Egypt in 2010 through a fruitful Egyptian-Emirati cooperation, believing in the market's growth potential, as well as its growing opportunities.

Al Qamzi Developments in Egypt focuses on developing high-end properties catering to the country's elite, thanks to an original alchemy that combines luxury designs, nature and impressive facilities in its most-sought after locations.

Slowly but surely, the company has managed to elevate living standards with benchmark quality, gaining a trusted reputation for its innovative vision, quality integration and high return on investment which sets it apart of competitors in the field.





HOMES DESIGNED WITH YOU AND NATURE AT HEART

At Eastshire, it's hard to tell where nature begins and privacy ends. The project is expertly designed to reflect an original indoor/outdoor concept where greenery and flowing water features come alive around every corner, as well as inside your home, wherever you are.

Artfully envisaged to mimic scenic European lifestyles, each of Eastshire's homes are evenly spread out with mindful green spaces in between, guaranteeing a boutique experience of ultimate privacy that takes exclusivity to new heights. Eastshire is in short, views for life and privacy for everyone alike, teleporting residents into a stress-free lifestyle where green rules in all its breathing forms.

Disclaimer: 1. Actual areas may vary from the stated area. Drawings are not to scale. 2. The architectural details, dimensions and areas in all drawings are approximate information based on schematic design information only, and final as-built conditions may vary. 3. All units are sold as core & shell unfurnished, without furniture, pools, pergolas and finishing, etc. 4. All images used are for illustrative purposes only and do not represent the actual size, features, specifications, fittings, and furnishings. 5. Alqamzi developments reserves the right to make revisions/alterations, at its absolute discretion, and without liability. 6. Each garden plot will vary based on the location of the building. 7. Room dimensions will vary according to construction and finishing tolerances. 8. All materials, dimensions and drawings are approximate. Information subject to change without notice. 9. Detailed dimensions may vary from table of dimensions and area. 10. this type is only a representation for this type not its mirror.



- 3 MINUTES from the American University in Cairo.
- 25 MINUTES from the Cairo International Airport.
- 5 MINUTES from the Median Ring Road.
- 3 MINUTES from Point 90 Mall.

A SIGNATURE ADDRESS IN THE HEART OF NEW CAIRO

Expertly masterplanned with residents' convenience in mind, Eastshire offers a unique living experience that places your home at the intersection of life's most sought after happenings. Boasting a prime location in the heart of New Cairo, only 3 mins away from The American University and 5 mins from the East Ring Road.

Eastshire provides seamless accessibility to all of the Fifth Settlement's vital establishments, as well as its leading business and commercial hubs while granting easy access to all of Cairo's neighborhoods, thanks to its close proximity to Suez Road and Sokhna Capital Road.

The project lies only minutes away from Street 90's Central Monorail Station while enjoying strategic connectivity with The New Administrative Capital, as well as Cairo International Airport, empowering you to seize the future, hassle-free.

NATURALLY, BLESSED MASTERPLAN

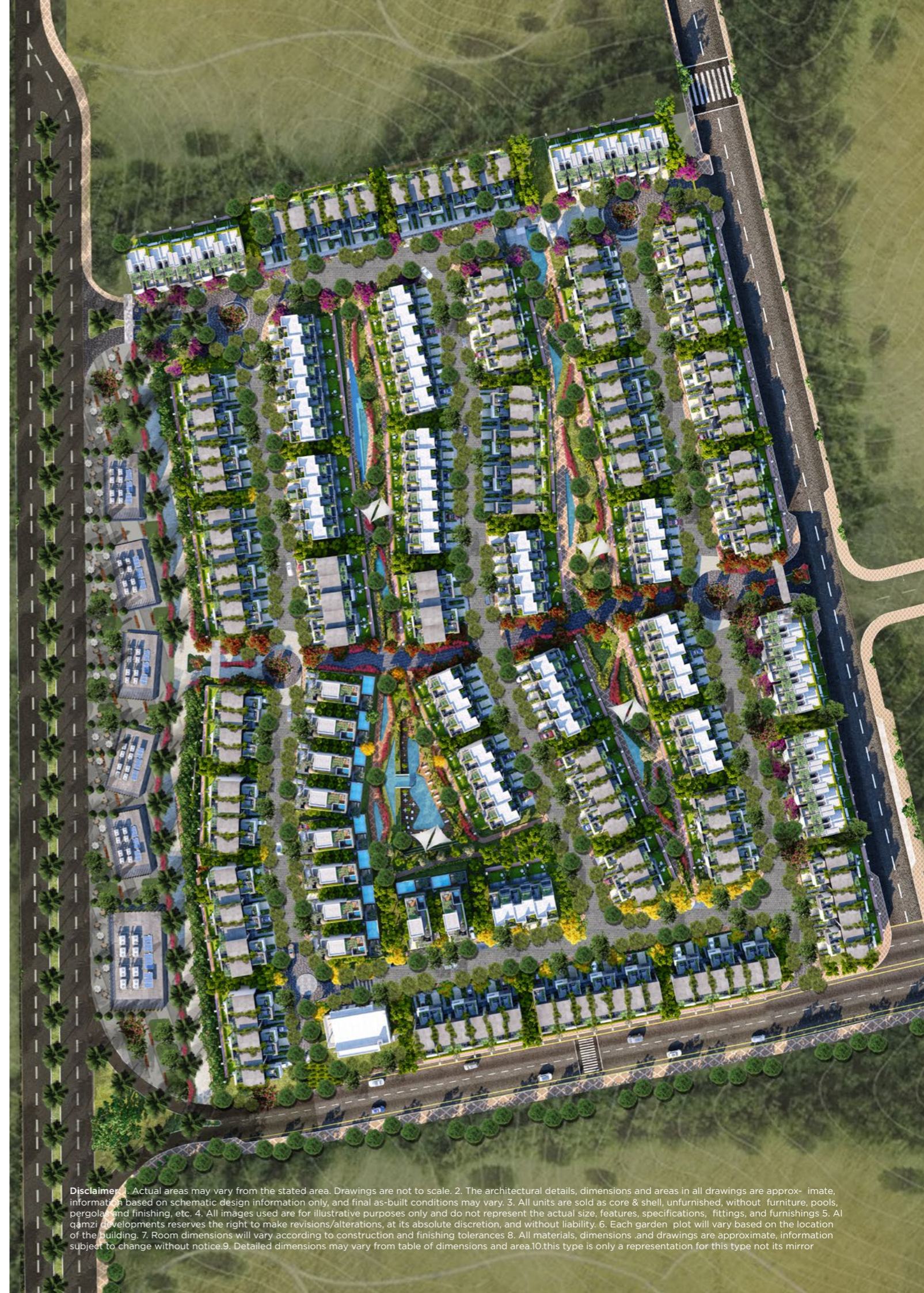
MASTERPLANNED ON 26 ACRES OF LAND IN COLLABORATION WITH LEADING ARCHITECT RAEF FAHMY, EASTSHIRE IS A BLUEPRINT OF SUSTAINABLE LIVING IN THE HEART OF NEW CAIRO.

The project is carefully designed with residents' ultimate privacy in mind by providing equal spaces between units while maximizing views on open landscapes for the outdoors and natural daylight to live inside.

Boasting a modern flare, the contemporary architecture style seamlessly blends in with nature while adding a serene sense of flowing tranquility with an exclusive sunken pool designed on varied gradings in the site's heart to offer world-class experiences of every kind.

Inspired by the functionality and aesthetic simplicity of European lifestyles, Eastshire's masterplan puts seamless walkability at its forefront, providing lush promenades for daily recreation, in addition to communal areas for its residents to safely connect under the sun or retreat in the shade.

With a signature collection of exclusive villas, and elegantly appointed townhomes that lie separately on its masterplan, Eastshire opens your eyes on an intimate community where nature, exclusivity and world-class amenities live at your door.



Disclaimer: 1. Actual areas may vary from the stated area. Drawings are not to scale. 2. The architectural details, dimensions and areas in all drawings are approximate, information based on schematic design information only, and final as-built conditions may vary. 3. All units are sold as core & shell, unfurnished, without furniture, pools, pergolas and finishing, etc. 4. All images used are for illustrative purposes only and do not represent the actual size, features, specifications, fittings, and furnishings. 5. Al qamzi developments reserves the right to make revisions/alterations, at its absolute discretion, and without liability. 6. Each garden plot will vary based on the location of the building. 7. Room dimensions will vary according to construction and finishing tolerances. 8. All materials, dimensions and drawings are approximate, information subject to change without notice. 9. Detailed dimensions may vary from table of dimensions and area. 10. this type is only a representation for this type not its mirror

BIRD'S EYE VIEW MASTERPLAN



Disclaimer: 1. Actual areas may vary from the stated area. Drawings are not to scale. 2. The architectural details, dimensions and areas in all drawings are approximate, information based on schematic design information only, and final as-built conditions may vary. 3. All units are sold as core & shell, unfurnished, without furniture, pools, pergolas and finishing, etc. 4. All images used are for illustrative purposes only and do not represent the actual size, features, specifications, fittings, and furnishings. 5. All garages developments reserves the right to make revisions/alterations, at its absolute discretion, and without liability. 6. Each garden plot will vary based on the location of the building. 7. Room dimensions will vary according to construction and finishing tolerances. 8. All materials, dimensions and drawings are approximate, information subject to change without notice. 9. Detailed dimensions may vary from table of dimensions and area. 10. This type is only a representation for this type not its mirror.



VALLEY 1

Presenting an endless stretch of tree-lined pathways and vibrant horizons down the Valley. This is the perfect place located by the back gardens of the townhouses to enjoy morning runs and sunset strolls.





VALLEY 2

The Valley welcomes you to an outdoor experience that will entirely redefine your perspective of nature. Ranging from 10m to 35m wide and 110m to 155m long, the Valley is located by the back gardens of the townhouses where relaxation has no boundaries.

VALLEY 2



Disclaimer: 1. Actual areas may vary from the stated area. Drawings are not to scale. 2. The architectural details, dimensions and areas in all drawings are approximate, information based on schematic design information only, and final as-built conditions may vary. 3. All units are sold as core & shell, unfurnished, without furniture, pools, pergolas and finishing, etc. 4. All images used are for illustrative purposes only and do not represent the actual size, features, specifications, fittings, and furnishings. 5. Al qamzi developments reserves the right to make revisions/alterations, at its absolute discretion, and without liability. 6. Each garden plot will vary based on the location of the building. 7. Room dimensions will vary according to construction and finishing tolerances. 8. All materials, dimensions and drawings are approximate, information subject to change without notice. 9. Detailed dimensions may vary from table of dimensions and area. 10. This type is only a representation for this type not its mirror.

VALLEY 2



Disclaimer: 1. Actual areas may vary from the stated area. Drawings are not to scale. 2. The architectural details, dimensions and areas in all drawings are approximate, information based on schematic design information only, and final as-built conditions may vary. 3. All units are sold as core & shell, unfurnished, without furniture, pools, pergolas and finishing, etc. 4. All images used are for illustrative purposes only and do not represent the actual size, features, specifications, fittings, and furnishings. 5. Al Gamz Development reserves the right to make revisions/alterations, at its absolute discretion, and without liability. 6. Each garden plot will vary based on the location of the building. 7. Room dimensions will vary according to construction and finishing tolerances. 8. All materials, dimensions and drawings are approximate, information subject to change without notice. 9. Detailed dimensions may vary from table of dimensions and area. 10. This type is only a representation for this type not its mirror.



Disclaimer: 1. Actual areas may vary from the stated area. Drawings are not to scale. 2. The architectural details, dimensions and areas in all drawings are approximate, information based on schematic design information only, and final as-built conditions may vary. 3. All units are sold as core & shell, unfurnished, without furniture, pools, pergolas and finishing, etc. 4. All images used are for illustrative purposes only and do not represent the actual size, features, specifications, fittings, and furnishings. 5. Al qamzi developments reserves the right to make revisions/alterations, at its absolute discretion, and without liability. 6. Each garden plot will vary based on the location of the building. 7. Room dimensions will vary according to construction and finishing tolerances. 8. All materials, dimensions and drawings are approximate, information subject to change without notice. 9. Detailed dimensions may vary from table of dimensions and area. 10. This type is only a representation for this type not its mirror.





Commercial Area

The Commercial Area delivers the perfect balance of lifestyle and luxury just 20 meters away from the residential area, offering panoramic views, world-class restaurants, boutique shops and unrivalled entertainment.

COMMERCIAL AREA



Disclaimer: 1. Actual areas may vary from the stated area. Drawings are not to scale. 2. The architectural details, dimensions and areas in all drawings are approximate, information based on schematic design information only, and final as-built conditions may vary. 3. All units are sold as core & shell, unfurnished, without furniture, pools, pergolas and finishing etc. 4. All images used are for illustrative purposes only and do not represent the actual size, features, specifications, fittings, and furnishings. 5. Al gamzi developments reserves the right to make revisions/alterations, at its absolute discretion, and without liability. 6. Each garden plot will vary based on the location of the building. 7. Room dimensions will vary according to construction and finishing tolerances. 8. All materials, dimensions and drawings are approximate, information subject to change without notice. 9. Detailed dimensions may vary from table of dimensions and area. 10. This type is only a representation for this type not its mirror.



SIGNATURE VILLAS

Step into a true embodiment of unparalleled luxury, re-imagining space from an innovative perspective to surround you with a breathing living experience of utmost exclusivity.

Eastshire Villas boast an unmatched variety of signature amenities, allowing you to privately relax at the comfort of your own home while enjoying nature inside every room. With an expansive layout that combines the best in function and form, as well as chic, inspired interiors, Eastshire Villa is all you need to experience new born luxury in the heart of New Cairo.



Disclaimer: 1. Actual areas may vary from the stated area. Drawings are not to scale. 2. The architectural details, dimensions and areas in all drawings are approximate, information based on schematic design information only, and final as-built conditions may vary. 3. All units are sold as core & shell, unfurnished, without furniture, pools, pergolas and finishing, etc. 4. All images used are for illustrative purposes only and do not represent the actual size, features, specifications, fittings and furnishings. 5. Al qamzi developments reserves the right to make revisions/alterations, at its absolute discretion, and without liability. 6. Each garden plot will vary based on the location of the building. 7. Room dimensions will vary according to construction and finishing tolerances. 8. All materials, dimensions and drawings are approximate, information subject to change without notice. 9. Detailed dimensions may vary from table of dimensions and area. 10. This type is only a representation for this type not its mirror.



Disclaimer: 1. Actual areas may vary from the stated area. Drawings are not to scale. 2. The architectural details, dimensions and areas in all drawings are approximate, information based on schematic design information only, and final as-built conditions may vary. 3. All units are sold as core & shell, unfurnished, without furniture, pools, pergolas and finishing, etc. 4. All images used are for illustrative purposes only and do not represent the actual size, features, specifications, fittings, and furnishings. 5. Al qamzi developments reserves the right to make revisions/alterations, at its absolute discretion, and without liability. 6. Each garden plot will vary based on the location of the building. 7. Room dimensions will vary according to construction and finishing tolerances. 8. All materials, dimensions and drawings are approximate, information subject to change without notice. 9. Detailed dimensions may vary from table of dimensions and area. 10. This type is only a representation for this type not its mirror.

SIGNITURE VILLAS

Total Area:
345 m²



GROUND FLOOR

Front Porch	3.90 X 2.60
Entrance	3.80 X 3.65
	3.30 X 2.65
Main Dining	4.20 X 3.80
Reception	4.00 X 3.15
	4.85 X 3.20
	3.80 X 3.35
Staircase	5.45 X 1.10/2.00
Laundry	1.95 X 1.85
Guest Toilet	1.95 X 1.80
Kitchen	4.10 X 3.65
Maids Room	2.05 X 1.95
Maids Bath	2.05 X 1.95
Terrace	2.10/1.30 X 8.50



FIRST FLOOR

Master Bedroom	4.10 X 4.10
Dressing	2.20 X 1.50
Master Bathroom	2.50 X 2.20
Lobby	4.10 X 1.80
	3.40 X 1.30
Staircase	5.40 X 2.00
Bedroom 01	4.60 X 3.65
Bathroom 01	2.50 X 2.20
Bathroom 02	2.50 X 1.80
Bedroom 02	3.80 X 3.60
Bedroom 03	4.10 X 3.90
Terrace	3.40 X 2.90



ROOF FLOOR

Living Room	4.40 X 3.30
Kitchenette	2.60 X 2.10
Staircase	5.40 X 1.95/1.10
Toilet	2.00 X 1.60
Terrace	6.00 X 4.85
	3.40 X 2.35
	5.90 X 1.50
	8.25 X 3.60/4.15

Disclaimer: 1. Actual areas may vary from the stated area. Drawings are not to scale. 2. The architectural details, dimensions and areas in all drawings are approximate, information based on schematic design information only, and final as-built conditions may vary. 3. All units are sold as core & shell, unfurnished, without furniture, pools, pergolas and finishing, etc. 4. All images used are for illustrative purposes only and do not represent the actual size, features, specifications, fittings, and furnishings. 5. Al qamzi developments reserves the right to make revisions/alterations, at its absolute discretion, and without liability. 6. Each garden plot will vary based on the location of the building. 7. Room dimensions will vary according to construction and finishing tolerances. 8. All materials, dimensions and drawings are approximate, information subject to change without notice. 9. Detailed dimensions may vary from table of dimensions and area. 10. This type is only a representation for this type not its mirror.



RENAISSANCE TOWNHOUSE

Eastshire's Renaissance Townhouse is a sleek statement of pure elegance, boasting a streamlined minimalist facade and a spacious layout, ideal for large families wishing to experience maximum privacy, as well as opulence redefined.



Disclaimer: 1. Actual areas may vary from the stated area. Drawings are not to scale. 2. The architectural details, dimensions and areas in all drawings are approximate, information based on schematic design information only, and final as-built conditions may vary. 3. All units are sold as core & shell, unfurnished, without furniture, pools, pergolas and finishing, etc. 4. All images used are for illustrative purposes only and do not represent the actual size, features, specifications, fittings, and furnishings. 5. Al qamzi developments reserves the right to make revisions/alterations, at its absolute discretion, and without liability. 6. Each garden plot will vary based on the location of the building. 7. Room dimensions will vary according to construction and finishing tolerances. 8. All materials, dimensions and drawings are approximate, information subject to change without notice. 9. Detailed dimensions may vary from table of dimensions and area. 10. this type is only a representation for this type not its mirror



Disclaimer: 1. Actual areas may vary from the stated area. Drawings are not to scale. 2. The architectural details, dimensions and areas in all drawings are approximate, information based on schematic design information only, and final as-built conditions may vary. 3. All units are sold as core & shell, unfurnished, without furniture, pools, pergolas and finishing, etc. 4. All images used are for illustrative purposes only and do not represent the actual size, features, specifications, fittings and furnishings. 5. Al gamzi developments reserves the right to make revisions/alterations, at its absolute discretion, and without liability. 6. Each garden plot will vary based on the location of the building. 7. Room dimensions will vary according to construction and finishing tolerances. 8. All materials, dimensions and drawings are approximate, information subject to change without notice. 9. Detailed dimensions may vary from table of dimensions and area. 10. This type is only a representation for this type not its mirror.

RENAISSANCE TOWNHOUSE TA

Total Area:
285 m²



GROUND FLOOR

Front Porch	3.25 X 1.80
Entrance	1.85 X 1.80
Lobby	3.15 X 1.70
Reception	3.50 X 3.50
	5.60 X 4.30
Main Dining	5.20 X 3.50
Stair Case	2.90 X 2.00/3.00
Laundry	1.45 X 0.90
Guest Toilet	1.70 X 1.95
Kitchen	3.75 X 4.05
Terrace 01	2.00/1.00 x 7.75



FIRST FLOOR

Master Bedroom	3.90 X 5.15
	1.20 X 2.55
Dressing	2.45 X 2.55
Master Bathroom	2.30 X 1.95
Lobby	3.00 X 1.15
Staircase	3.00 X 2.65
Bedroom 01	4.05 X 3.75
Bathroom 01	3.30 X 1.80
Bedroom 02	4.50 X 3.75
Terrace	3.65 X 0.95



ROOF FLOOR

Livingroom & Kitchenette	3.75 X 2.70
Lobby 01	3.00 X 2.70
Lobby 02	1.95 X 1.20
Staircase	3.00 X 2.65
Bathroom 02	2.00 X 1.70
Maids Room	2.00 X 1.95
Maids Bath	1.95 X 1.20
Bedroom 03	3.65 X 3.90
Terrace 01	4.20 X 3.90
Terrace 02	4.00 X 1.70
	4.00 X 3.90

Disclaimer: 1. Actual areas may vary from the stated area. Drawings are not to scale. 2. The architectural details, dimensions and areas in all drawings are approximate, information based on schematic design information only, and final as-built conditions may vary. 3. All units are sold as core & shell, unfurnished, without furniture, pools, pergolas and finishing, etc. 4. All images used are for illustrative purposes only and do not represent the actual size, features, specifications, fittings, and furnishings. 5. Al qamzi developments reserves the right to make revisions/alterations, at its absolute discretion, and without liability. 6. Each garden plot will vary based on the location of the building. 7. Room dimensions will vary according to construction and finishing tolerances. 8. All materials, dimensions and drawings are approximate, information subject to change without notice. 9. Detailed dimensions may vary from table of dimensions and area. 10. This type is only a representation for this type not its mirror.



SHIREVILLE

ShireVille is a unique modern interpretation of family living at its best. Inspired by luxurious Victorian row houses where space is amplified, ShireVille is an ideal choice for small families wishing to bond in inspired settings while enjoying all the conveniences of modern life.



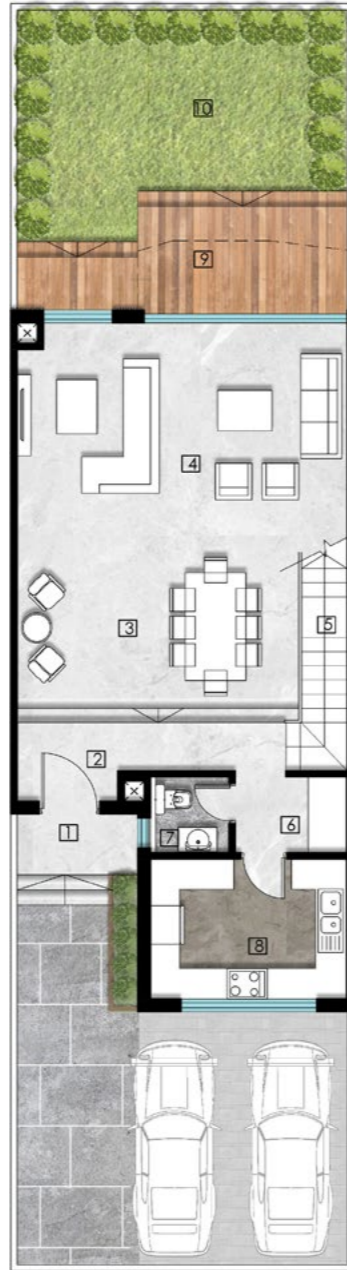
Disclaimer: 1. Actual areas may vary from the stated area. Drawings are not to scale. 2. The architectural details, dimensions and areas in all drawings are approximate, information based on schematic design information only, and final as-built conditions may vary. 3. All units are sold as core & shell, unfurnished, without furniture, pools, pergolas and finishing, etc. 4. All images used are for illustrative purposes only and do not represent the actual size, features, specifications, fittings, and furnishings. 5. Al qamzi developments reserves the right to make revisions/alterations, at its absolute discretion, and without liability. 6. Each garden plot will vary based on the location of the building. 7. Room dimensions will vary according to construction and finishing tolerances. 8. All materials, dimensions and drawings are approximate, information subject to change without notice. 9. Detailed dimensions may vary from table of dimensions and area. 10. this type is only a representation for this type not its mirror



Disclaimer: 1. Actual areas may vary from the stated area. Drawings are not to scale. 2. The architectural details, dimensions and areas in all drawings are approximate, information based on schematic design information only, and final as-built conditions may vary. 3. All units are sold as core & shell, unfurnished, without furniture, pools, pergolas and finishing, etc. 4. All images used are for illustrative purposes only and do not represent the actual size, features, specifications, fittings, and furnishings. 5. Al qamzi developments reserves the right to make revisions/alterations, at its absolute discretion, and without liability. 6. Each garden plot will vary based on the location of the building. 7. Room dimensions will vary according to construction and finishing tolerances. 8. All materials, dimensions and drawings are approximate, information subject to change without notice. 9. Detailed dimensions may vary from table of dimensions and area. 10. This type is only a representation for this type not its mirror.

SHIREVILLE TB

Total Area:
261 m²



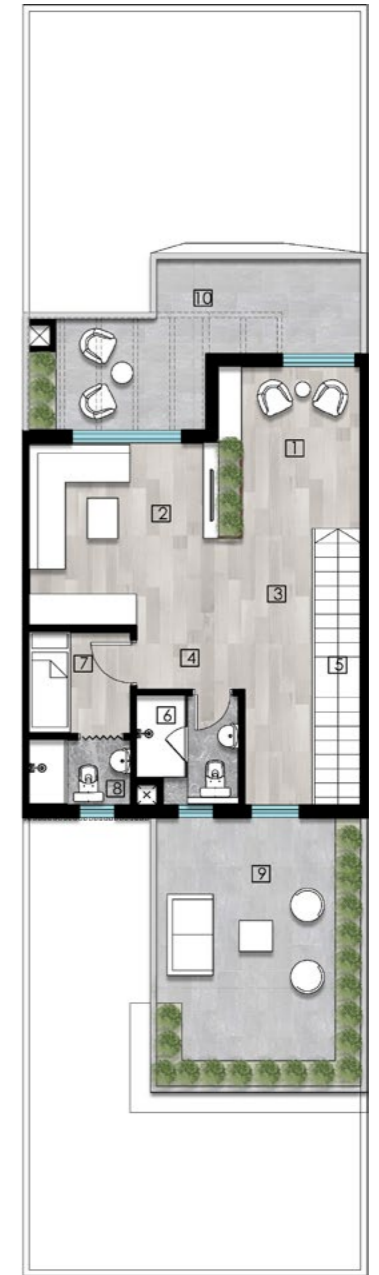
GROUND FLOOR

Front Porch	2.40 x 1.55
Entrance	5.30 x 1.55/0.95
Main Dining	5.55 x 4.20
Reception	6.50 x 3.80
Staircase	5.15 x 1.25
Laundry	2.20 x 1.50
Guest Toilet	1.55 x 1.50
Kitchen	3.90 x 2.75
Terrace 01	2.00/1.00 x 6.50



FIRST FLOOR

Master Bedroom	3.75 X 3.90
Dressing	4.45 X 2.00
Master Bathroom	2.60 X 2.50
Lobby	7.15 X 1.00
	1.95 X 1.30
Staircase	7.15 X 0.90
Bedroom 01	4.60/4.00X 4.45
Bathroom 01	2.15 X1.80
Bedroom 02	3.90 X 3.60



ROOF FLOOR

Reading Corner	3.20 X 2.80
Livingroom & Kitchenette	3.70 X 3.60
Lobby 01	5.45 X 1.35
Lobby 02	2.15 X 1.25
Staircase	5.45 X 0.90
Bathroom 02	2.15 X 2.00
Maids Room	2.00 X 2.00
Maids Bath	2.00 X 1.30
Roof Terrace 01	5.30 X 4.00
Roof Terrace 02	4.00/1.85
	2.20 X2.50/3.50

Disclaimer: 1. Actual areas may vary from the stated area. Drawings are not to scale. 2. The architectural details, dimensions and areas in all drawings are approximate, information based on schematic design information only, and final as-built conditions may vary. 3. All units are sold as core & shell, unfurnished, without furniture, pools, pergolas and finishing, etc. 4. All images used are for illustrative purposes only and do not represent the actual size, features, specifications, fittings, and furnishings. 5. Al qamzi developments reserves the right to make revisions/alterations, at its absolute discretion, and without liability. 6. Each garden plot will vary based on the location of the building. 7. Room dimensions will vary according to construction and finishing tolerances. 8. All materials, dimensions and drawings are approximate, information subject to change without notice. 9. Detailed dimensions may vary from table of dimensions and area. 10. This type is only a representation for this type not its mirror.



TOWNVILLE

Eastshire's TownVille is a contemporary outlook on modern sophistication, combining a raw European design with the warmth of Egyptian lifestyles to dictate a one-of-a-kind living experience where less is certainly more.



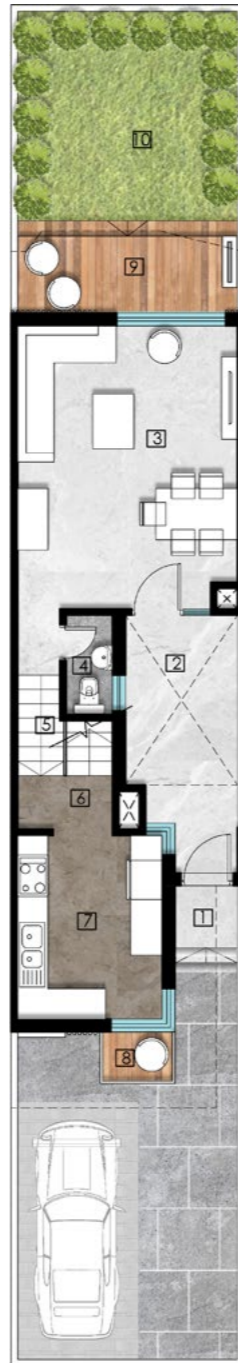
Disclaimer: 1. Actual areas may vary from the stated area. Drawings are not to scale. 2. The architectural details, dimensions and areas in all drawings are approximate, information based on schematic design information only, and final-as-built conditions may vary. 3. All units are sold as core & shell, unfurnished, without furniture, pools, pergolas and finishing, etc. 4. All images used are for illustrative purposes only and do not represent the actual size, features, specifications, fittings, and furnishings. 5. Al qanzli developments reserves the right to make revisions/alterations, at its absolute discretion, and without liability. 6. Each garden plot will vary based on the location of the building. 7. Room dimensions will vary according to construction and finishing tolerances. 8. All materials, dimensions, and drawings are approximate, information subject to change without notice. 9. Detailed dimensions may vary from table of dimensions and area for this type is only a representation for this type not its mirror.



Disclaimer: 1. Actual areas may vary from the stated area. Drawings are not to scale. 2. The architectural details, dimensions and areas in all drawings are approximate, information based on schematic design information only, and final as-built conditions may vary. 3. All units are sold as core & shell, unfurnished, without furniture, pools, pergolas and finishing, etc. 4. All images used are for illustrative purposes only and do not represent the actual size, features, specifications, fittings, and furnishings. 5. Al Gamzi developments reserves the right to make revisions/alterations at its absolute discretion, and without liability. 6. Each garden plot will vary based on the location of the building. 7. Room dimensions will vary according to construction and finishing tolerances. 8. All materials, dimensions and drawings are approximate, information subject to change without notice. 9. Detailed dimensions may vary from table of dimensions and areas. This type is only a representation for this type not its mirror.

TOWNVILLE TC

Total Area:
166 m²



GROUND FLOOR

Front Porch	1.50 X 1.20
Entrance	2.17/1.20X 5.00
Reception & Main Dining	5.40 X 4.25
Guest Toilet	2.00 X 0.90
Staircase	3.00 X 1.85 X 0.80
Lobby 01	1.40 X 0.80
Kitchen	3.60 X 2.80
Front Ground Terrace	1.45 X 1.00
Back Ground Terrace	4.25 X 1.80



FIRST FLOOR

Master Bedroom	4.90 X 4.25
Master Bathroom	2.30 X 1.60
Lobby 01	3.00 X 1.85/0.90
Lobby 02	2.00 X 1.85
Staircase	3.40 X 1.85/0.90
Bedroom 01	3.70 X 3.60
Bathroom 01	2.30 X 1.60



ROOF FLOOR

Bedroom 02	4.25 x 3.70
Bathroom 02	2.30 x 1.60
Lobby 03	1.55 x 1.85
Lobby 04	1.05x0.90
Staircase	3.00x 1.85/0.90
Roof Terrace	4.25/3.75x6.05
Terrace	4.25 x 1.10

Disclaimer: 1. Actual areas may vary from the stated area. Drawings are not to scale. 2. The architectural details, dimensions and areas in all drawings are approximate, information based on schematic design information only, and final as-built conditions may vary. 3. All units are sold as core & shell, unfurnished, without furniture, pools, pergolas and finishing, etc. 4. All images used are for illustrative purposes only and do not represent the actual size, features, specifications, fittings, and furnishings. 5. Al qamzi developments reserves the right to make revisions/alterations, at its absolute discretion, and without liability. 6. Each garden plot will vary based on the location of the building. 7. Room dimensions will vary according to construction and finishing tolerances. 8. All materials, dimensions and drawings are approximate, information subject to change without notice. 9. Detailed dimensions may vary from table of dimensions and area. 10. This type is only a representation for this type not its mirror.

ALQAMZI
DEVELOPMENTS

16480
alqamzi.com