

THE BIGGEST LAKE

*Ms*<sup>®</sup>  
*By the lake*

CONNECTED TO THE SEA

THE BIGGEST LAKE

M8<sup>®</sup>  
By the lake



SE-DEVELOPERS.COM

19352 @SAUDIEGYPTIANDEVELOPERS

CONNECTED TO THE SEA

# The Biggest Lake

CONNECTED BY THE SEA

# CONTENT

01. SED THE DEVELOPER.
02. SED & NUCA PARTNERSHIP
03. M8 BY THE LAKE.
04. MASTERPLAN
05. M8 THE MAP LOCATION.
06. PROJECT OVERVIEW.
07. FLOORPLANS.
08. AMENITIES.





# 01

## ABOUT SAUDI EGYPTIAN DEVELOPERS



**SAUDI  
EGYPTIAN  
DEVELOPERS**

Founded in 1975, SED is a joint partnership between the Saudi and Egyptian governments that focuses on developing and introducing the Egyptian market with breakthrough destinations that add value through innovative solutions and strategies.

With our track record and objective to create communities that shape future landmarks, the company has delivered around 25,000 housing units currently inhabited by more than 114,000 individuals.

The group's current portfolio carries a variety of over 50 landmark projects within Egypt presenting a mix of luxurious residential towers as well as mixed-use communities such as Jayd New Cairo, Bleu Vert New Capital and Nile Pearl.

SED's future investments and developments carry the establishment of 7 new projects across Egypt.





# 02

## SED & NUCA PARTNERSHIP



In partnership with urban planner NUCA (New Urban Communities Authority), SED brought the city of M8 to life. NUCA is known for its mega industrial projects, valuable investment affiliations,

and owning Egypt's largest land bank on which they build modern cities with the latest systems and strategies.

Planning fundamental developments in the country and SED's driven mission have created a strategic space at Sahel, destined to be a fully accommodating city for visitors and residents looking for a high-standard living.

03

*M8*<sup>®</sup>  
*By the lake*



M8 by the lake showcases Contemporary Coastal Architecture with a focus on creating inviting, naturally

lit spaces. The design features buildings occupying just 27 acres, or about %17 of the site, with its layering levels offering a serene environment

overlooking a tranquil lagoon with a blend of white, beige, and stone cladding on the facades create a timeless, elegant aesthetic.



M8 by the lake also boasts a dynamic recreational promenade by the artificial lake, crystal-clear waters, green spaces, and a range of residential options from expansive standalone villas to modern townhouses,

chalets, and apartments all within a thoughtfully planned infrastructure, with dedicated pedestrian paths, supporting both tourism and community living.



04

MASTERPLAN



# ENJOY ENDLESS JOY

THE BIGGEST LAKE  
CONNECTED BY THE SEA





# 05

## M8 BY THE LAKE ON THE MAP LOCATION

A modern urban community in Alamein City on Egypt's North Coast, perfectly situated south of the Roman open museum at Kilo 99. Spanning 245 acres.

THE BIGGEST LAKE

CONNECTED TO THE SEA

*More*  
**VIBES**

GOOD VIBES AND TIDE VIBES  
THAT'S THE BEACH LIFE

ⓂⓈ

# 05

## DISCOVER M8 PROJECT OVERVIEW

A modern urban community in Alamein City on Egypt's North Coast, perfectly situated south of the Roman open museum at Kilo 99. Spanning 245 feddan.

M8 by the lake showcases Contemporary Coastal Architecture with a focus on creating inviting, naturally lit spaces. The design features buildings occupying just 27 acres, or about %12.3 of the site, with its layering levels offering a serene environment overlooking a tranquil lagoon.

Blend of white, beige, and stone cladding on the facades create a timeless, elegant aesthetic.

M8 by the lake also boasts a dynamic recreational promenade by the artificial lake, crystal-clear waters,

green spaces, and a range of residential options from expansive standalone villas to modern townhouses, chalets, and apartments all within a thoughtfully planned infrastructure, with dedicated pedestrian paths, supporting both tourism and community living.

## TYPES:

- > STANDALONE VILLAS
- > TWIN VILLAS
- > TOWNHOUSES
- > CHALETS
- > APARTMENT BUILDINGS
- > FAMILY HOUSES

## COMMUNITY OFFERING:

- + PEDESTRIAN PATHS
- + CONTEMPORARY COASTAL ARCHITECTURE
- + LAGOON
- + YACHT MARINA AND LAKE PROMENADE
- + GREEN SPACES
- + PRIVATE & PUBLIC BEACHES
- + RETAILS ZONES



THE BIGGEST LAKE

CONNECTED TO THE SEA





- 01 STANDALONE VILLA (LARGE)
- 02 STANDALONE VILLA (SMALL)
- 03 TWIN VILLAS
- 04 TOWNHOUSES
- 05 FAMILY HOUSE (1)
- 06 FAMILY HOUSE (2)
- 07 CHALETS
- 08 APARTMENT (1)
- 09 APARTMENT (2)



# VL STANDALONE VILLA

## STREET VIEW

Disclaimer:

also known as Marina 8, is surrounded by recreational and historical spaces, making it a true city with various activities to indulge in. Designed to be between Marina's lake and archaeological area at km 97, it is at the core of Marina. From the North, it is accentuated by a swimmable lake for leisure and a historic site turned open museum with Roman relics for people to take a dive into ancient history.

between Marina's lake and archaeological area at km 97, it is at the core of Marina. From the North, it is accentuated by a swimmable lake for leisure



# VL STANDALONE VILLA

## GARDEN VIEW

Disclaimer:

also known as Marina 8, is surrounded by recreational and historical spaces, making it a true city with various activities to indulge in. Designed to be between Marina's lake and archaeological area at km 97, it is at the core of Marina. From the North, it is accentuated by a swimmable lake for leisure and a historic site turned open museum with Roman relics for people to take a dive into ancient history.

between Marina's lake and archaeological area at km 97, it is at the core of Marina. From the North, it is accentuated by a swimmable lake for leisure



VL-STAND ALONE VILLA

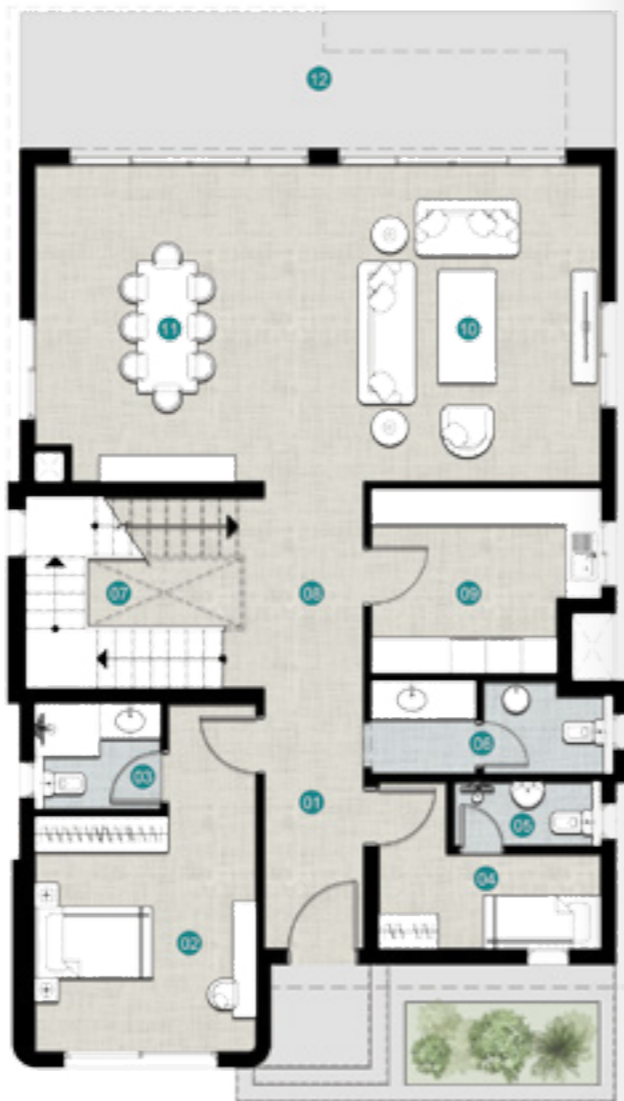
VL-STAND ALONE VILLA

TOTAL BUILT UP AREA 353 SQM

GROUND FLOOR	180
FIRST FLOOR	173

GROUND FLOOR

01	ENTRANCE	1.70 X 4.40
02	GUEST BEDROOM	3.75 X 4.00
03	GUEST BATHROOM	1.80 X 2.15
04	MAID'S BEDROOM	2.85 X 3.75
05	MAID'S BATHROOM	1.10 X 2.50
06	TOILET	1.60 X 4.10
07	STAIR	3.25 X 4.05
08	LOBBY	1.70 X 3.25
09	KITCHEN	3.15 X 3.90
10	RECEPTION	4.80 X 5.40
11	DINING ROOM	4.80 X 5.40
12	TERRACE	2.30 X 10.10



Disclaimer:  
also known as Marina 8, is surrounded by recreational and historical spaces, making it a true city with various activities to indulge in. Designed to be between Marina's lake and archaeological area at km 97, it is at the core of Marina. From the North, it is accentuated by a swimmable lake for leisure and a historic site turned open museum with Roman relics for people to take a dive into ancient history.  
between Marina's lake and archaeological area at km 97, it is at the core of Marina. From the North, it is accentuated by a swimmable lake for leisure

VL-STAND ALONE VILLA

FIRST FLOOR

01	STAIR	3.25 X 3.60
02	LOBBY	2.90 X 4.05
03	BEDROOM 1	4.60 X 5.00
04	TERRACE 1	1.10 X 3.90
05	BEDROOM 2	4.60 X 4.75
06	BATHROOM 1	2.05 X 2.40
07	BEDROOM 3	4.60 X 4.85
08	BATHROOM 2	1.90 X 2.75
09	TERRACE 2	1.80 X 3.85
10	MASTER BEDROOM	3.40 X 4.65
11	MASTER DRESSING	2.20 X 3.30
12	MASTER BATHROOM	1.95 X 3.50



Disclaimer:  
also known as Marina 8, is surrounded by recreational and historical spaces, making it a true city with various activities to indulge in. Designed to be between Marina's lake and archaeological area at km 97, it is at the core of Marina. From the North, it is accentuated by a swimmable lake for leisure and a historic site turned open museum with Roman relics for people to take a dive into ancient history.  
between Marina's lake and archaeological area at km 97, it is at the core of Marina. From the North, it is accentuated by a swimmable lake for leisure

# VS

## STANDALONE VILLA

### STREET VIEW

Disclaimer:

also known as Marina 8, is surrounded by recreational and historical spaces, making it a true city with various activities to indulge in. Designed to be between Marina's lake and archaeological area at km 97, it is at the core of Marina. From the North, it is accentuated by a swimmable lake for leisure and a historic site turned open museum with Roman relics for people to take a dive into ancient history.

between Marina's lake and archaeological area at km 97, it is at the core of Marina. From the North, it is accentuated by a swimmable lake for leisure



# VS

# STANDALONE VILLA

## GARDEN VIEW

Disclaimer:

also known as Marina 8, is surrounded by recreational and historical spaces, making it a true city with various activities to indulge in. Designed to be between Marina's lake and archaeological area at km 97, it is at the core of Marina. From the North, it is accentuated by a swimmable lake for leisure and a historic site turned open museum with Roman relics for people to take a dive into ancient history.

between Marina's lake and archaeological area at km 97, it is at the core of Marina. From the North, it is accentuated by a swimmable lake for leisure



# VS-STAND ALONE VILLA

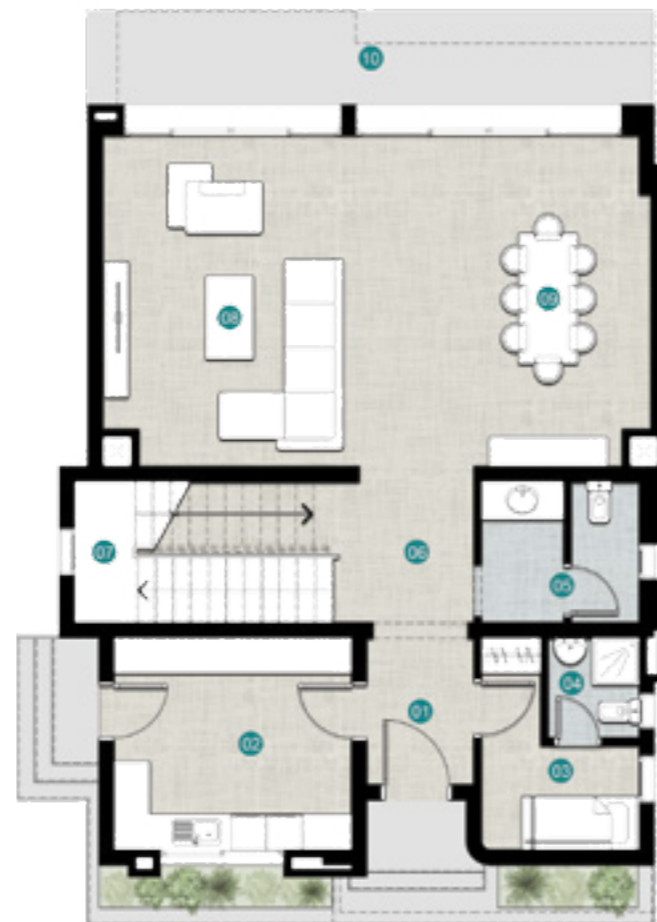
TOTAL BUILT UP AREA **295 SQM**

GROUND FLOOR **151**

FIRST FLOOR **144**

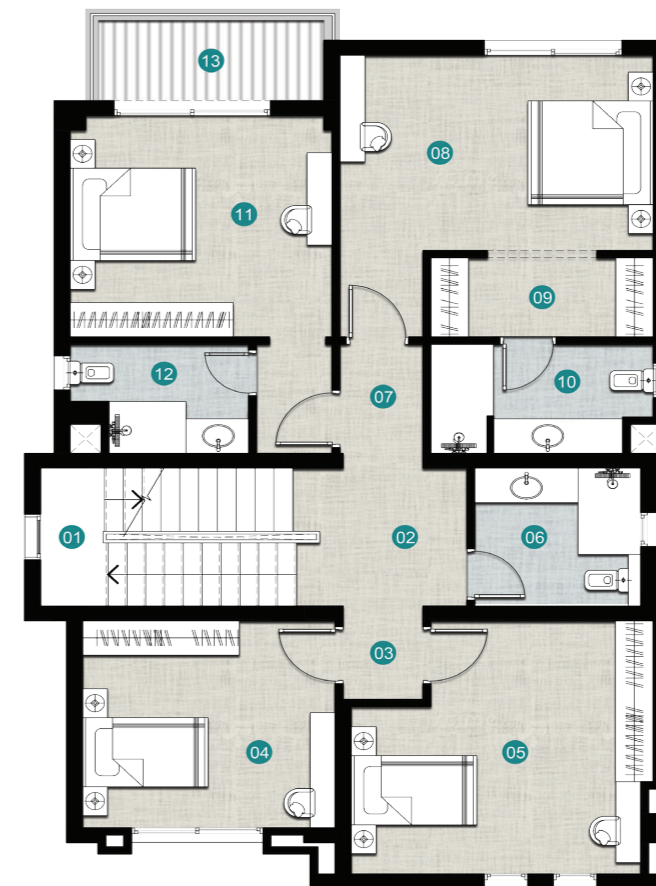
## GROUND FLOOR

1	ENTRANCE	1.80 X 2.50
2	KITCHEN	3.60 X 4.05
3	MAID'S BEDROOM	2.70 X 3.60
4	MAID'S BATHROOM	1.55 X 1.70
5	TOILET	2.40 X 2.70
6	LOBBY	1.95 X 2.40
7	STAIR	2.40 X 4.80
8	RECEPTION	4.65 X 5.60
9	DINING ROOM	4.65 X 5.60
10	TERRACE	1.60 X 9.60



## FIRST FLOOR

1	STAIR	2.40 X 4.80
2	LOBBY 1	2.00 X 2.40
3	LOBBY 2	1.30 X 1.60
4	BEDROOM 1	3.60 X 4.05
5	BEDROOM 2	4.40 X 4.80
6	BATHROOM 1	2.40 X 2.65
7	LOBBY 3	1.30 X 2.15
8	MASTER BEDROOM	3.40 X 5.00
9	MASTER DRESSING	1.40 X 3.55
10	MASTER BATHROOM	1.90 X 3.55
11	BEDROOM 3	3.85 X 4.20
12	BATHROOM 2	1.90 X 2.85
13	TERRACE	1.40 X 3.60



Disclaimer:

also known as Marina 8, is surrounded by recreational and historical spaces, making it a true city with various activities to indulge in. Designed to be between Marina's lake and archaeological area at km 97, it is at the core of Marina. From the North, it is accentuated by a swimmable lake for leisure and a historic site turned open museum with Roman relics for people to take a dive into ancient history. between Marina's lake and archaeological area at km 97, it is at the core of Marina. From the North, it is accentuated by a swimmable lake for leisure

Disclaimer:

also known as Marina 8, is surrounded by recreational and historical spaces, making it a true city with various activities to indulge in. Designed to be between Marina's lake and archaeological area at km 97, it is at the core of Marina. From the North, it is accentuated by a swimmable lake for leisure and a historic site turned open museum with Roman relics for people to take a dive into ancient history. between Marina's lake and archaeological area at km 97, it is at the core of Marina. From the North, it is accentuated by a swimmable lake for leisure

# TW TWINHOUSE

## STREET VIEW

Disclaimer:

also known as Marina 8, is surrounded by recreational and historical spaces, making it a true city with various activities to indulge in. Designed to be between Marina's lake and archaeological area at km 97, it is at the core of Marina. From the North, it is accentuated by a swimmable lake for leisure and a historic site turned open museum with Roman relics for people to take a dive into ancient history.

between Marina's lake and archaeological area at km 97, it is at the core of Marina. From the North, it is accentuated by a swimmable lake for leisure



# TW TWINHOUSE GARDEN VIEW

Disclaimer:

also known as Marina 8, is surrounded by recreational and historical spaces, making it a true city with various activities to indulge in. Designed to be between Marina's lake and archaeological area at km 97, it is at the core of Marina. From the North, it is accentuated by a swimmable lake for leisure and a historic site turned open museum with Roman relics for people to take a dive into ancient history.

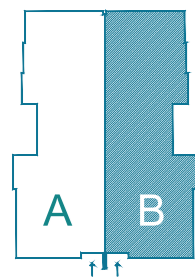
between Marina's lake and archaeological area at km 97, it is at the core of Marina. From the North, it is accentuated by a swimmable lake for leisure



# TW -TWINHOUSE

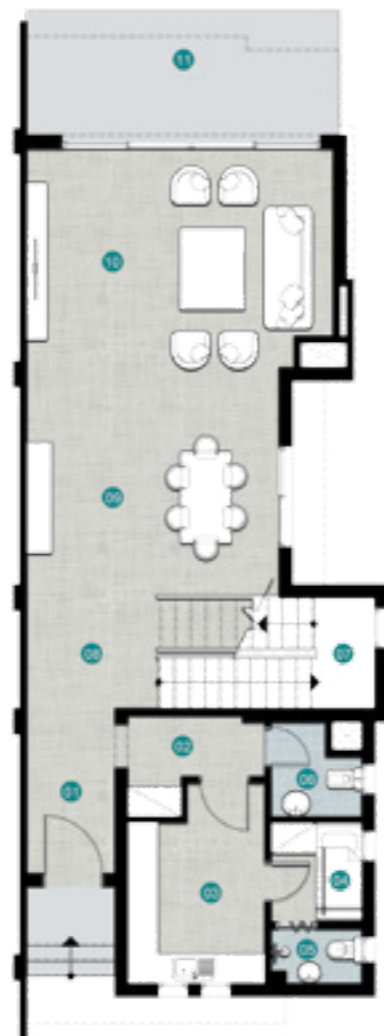
TOTAL BUILT UP AREA **256 SQM**

GROUND FLOOR	126
FIRST FLOOR	144



## GROUND FLOOR

1	ENTRANCE	1.75 X 3.25
2	LAUNDRY	2.00 X 2.70
3	KITCHEN	2.70 X 3.20
4	MAID'S BEDROOM	1.80 X 2.00
5	MAID'S BATHROOM	1.10 X 1.80
6	TOILET	1.80 X 1.90
7	STAIR	2.20 X 5.00
8	LOBBY	1.75 X 2.20
9	DINING ROOM	4.55 X 5.00
10	RECEPTION	4.35 X 6.10
11	TERRACE	2.50 X 6.20



**Disclaimer:**

also known as Marina 8, is surrounded by recreational and historical spaces, making it a true city with various activities to indulge in. Designed to be between Marina's lake and archaeological area at km 97, it is at the core of Marina. From the North, it is accentuated by a swimmable lake for leisure and a historic site turned open museum with Roman relics for people to take a dive into ancient history.

## FIRST FLOOR

1	STAIR	2.20 X 5.15
2	LOBBY 1	1.75 X 2.20
3	LOBBY 2	1.75 X 2.25
4	BATHROOM 1	3.00 X 4.20
5	BEDROOM 1	3.60 X 4.90
6	TERRACE 1	1.50 X 1.60
7	CORRIDOR	1.25 X 4.30
8	BEDROOM 2	4.05 X 4.30
9	MASTER BEDROOM	3.50 X 4.10
10	MASTER DRESSING	2.75 X 2.80
11	MASTER BATHROOM	2.00 X 4.70
12	TERRACE 2	1.40 X 1.85



**Disclaimer:**

also known as Marina 8, is surrounded by recreational and historical spaces, making it a true city with various activities to indulge in. Designed to be between Marina's lake and archaeological area at km 97, it is at the core of Marina. From the North, it is accentuated by a swimmable lake for leisure and a historic site turned open museum with Roman relics for people to take a dive into ancient history.

# TH TOWNHOUSE

## STREET VIEW

Disclaimer:

also known as Marina 8, is surrounded by recreational and historical spaces, making it a true city with various activities to indulge in. Designed to be between Marina's lake and archaeological area at km 97, it is at the core of Marina. From the North, it is accentuated by a swimmable lake for leisure and a historic site turned open museum with Roman relics for people to take a dive into ancient history.

between Marina's lake and archaeological area at km 97, it is at the core of Marina. From the North, it is accentuated by a swimmable lake for leisure



# TH TOWNHOUSE

STREET VIEW

Disclaimer:

also known as Marina 8, is surrounded by recreational and historical spaces, making it a true city with various activities to indulge in. Designed to be between Marina's lake and archaeological area at km 97, it is at the core of Marina. From the North, it is accentuated by a swimmable lake for leisure and a historic site turned open museum with Roman relics for people to take a dive into ancient history.

between Marina's lake and archaeological area at km 97, it is at the core of Marina. From the North, it is accentuated by a swimmable lake for leisure



TH-TOWNHOUSE CORNER UNIT

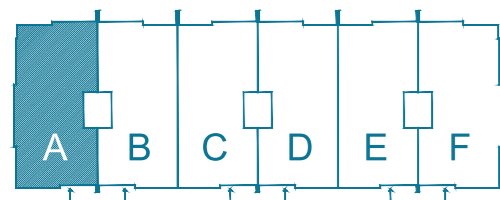
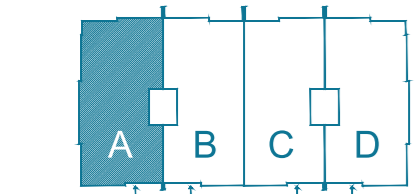
TH-TOWNHOUSE CORNER UNIT

TOTAL BUILT UP AREA 219 SQM

GROUND FLOOR 106  
FIRST FLOOR 113

GROUND FLOOR

1	ENTRANCE	1.85 X 2.50
2	TOILET	1.60 X 2.40
3	MAID'S BEDROOM	2.50 X 3.35
4	MAID'S BATHROOM	1.40 X 1.50
5	STAIR	2.50 X 5.30
6	CORRIDOR	1.05 X 5.30
7	KITCHEN	2.15 X 3.10
8	RECEPTION	3.60 X 5.45
9	DINING ROOM	3.60 X 4.05
10	TERRACE	1.40 X 7.45



Disclaimer:

also known as Marina 8, is surrounded by recreational and historical spaces, making it a true city with various activities to indulge in. Designed to be between Marina's lake and archaeological area at km 97, it is at the core of Marina. From the North, it is accentuated by a swimmable lake for leisure and a historic site turned open museum with Roman relics for people to take a dive into ancient history.

TH-TOWNHOUSE CORNER UNIT

FIRST FLOOR

1	STAIR	2.50 X 5.30
2	CORRIDOR	1.05 X 5.30
3	BEDROOM 1	3.60 X 3.60
4	BEDROOM 2	3.50 X 3.65
5	TERRACE 1	1.30 X 3.40
6	BATHROOM	2.20 X 2.50
7	LOBBY	1.30 X 3.45
8	MASTER BEDROOM	3.85 X 4.30
9	MASTER BATHROOM	2.40 X 2.60
10	BEDROOM 3	3.20 X 4.05
11	TERRACE 2	1.20 X 3.20



Disclaimer:

also known as Marina 8, is surrounded by recreational and historical spaces, making it a true city with various activities to indulge in. Designed to be between Marina's lake and archaeological area at km 97, it is at the core of Marina. From the North, it is accentuated by a swimmable lake for leisure and a historic site turned open museum with Roman relics for people to take a dive into ancient history.

# FH1

## FAMILY HOUSE 01

### STREET VIEW



Disclaimer:  
also known as Marina 8, is surrounded by recreational and historical spaces, making it a true city with various activities to indulge in. Designed to be between Marina's lake and archaeological area at km 97, it is at the core of Marina. From the North, it is accentuated by a swimmable lake for leisure and a historic site turned open museum with Roman relics for people to take a dive into ancient history.  
between Marina's lake and archaeological area at km 97, it is at the core of Marina. From the North, it is accentuated by a swimmable lake for leisure

# FH1

## FAMILY HOUSE 01

### GARDEN VIEW

Disclaimer:

also known as Marina 8, is surrounded by recreational and historical spaces, making it a true city with various activities to indulge in. Designed to be between Marina's lake and archaeological area at km 97, it is at the core of Marina. From the North, it is accentuated by a swimmable lake for leisure and a historic site turned open museum with Roman relics for people to take a dive into ancient history.

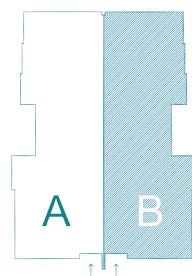
between Marina's lake and archaeological area at km 97, it is at the core of Marina. From the North, it is accentuated by a swimmable lake for leisure



# FH 01-FAMILY HOUSE 01 GARDEN DUPLEX

TOTAL BUILT UP AREA **220 SQM**

BASEMENT **118**  
GROUND FLOOR **102**



## BASEMENT

1	STAIR	1.30 X 2.50
2	LOBBY	5.30 X 2.60
3	RECEPTION	3.50 X 5.70
4	DINING ROOM	4.20 X 4.00
5	READING CORNER	4.00 X 3.20
6	BEDROOM 2	3.50 X 4.00
7	BATHROOM 1	2.60 X 2.20
8	KITCHEN	4.00 X 2.60
9	BATHROOM 2	1.20 X 2.40
10		
11		



Disclaimer:

also known as Marina 8, is surrounded by recreational and historical spaces, making it a true city with various activities to indulge in. Designed to be between Marina's lake and archaeological area at km 97, it is at the core of Marina. From the North, it is accentuated by a swimmable lake for leisure and a historic site turned open museum with Roman relics for people to take a dive into ancient history.

## GROUND FLOOR

1	GROUND FLOOR ENTRANCE	6.50 X 2.60
2	FIRST FLOOR ENTRANCE	9.60 X 1.60
3	RECEPTION	3.50 X 5.70
4	BEDROOM 2	3.80 X 3.50
5	MASTER BATHROOM	2.70 X 2.40
6	BEDROOM 1	4.20 X 3.40
7	MASTER BEDROOM	4.50 X 4.00
8	TERRACE 1	1.30 X 3.20
9	TERRACE 2	3.50 X 1.20
10	BATHROOM 1	2.60 X 2.30



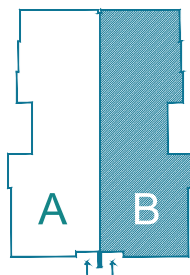
Disclaimer:

also known as Marina 8, is surrounded by recreational and historical spaces, making it a true city with various activities to indulge in. Designed to be between Marina's lake and archaeological area at km 97, it is at the core of Marina. From the North, it is accentuated by a swimmable lake for leisure and a historic site turned open museum with Roman relics for people to take a dive into ancient history.

# FH 01-FAMILY HOUSE 01 ROOF DUPLEX

TOTAL BUILT UP AREA 179 SQM

FIRST FLOOR 113  
ROOF 65



## FIRST FLOOR

1	STAIR	2.50 X 1.30
2	LOBBY	5.80 X 1.40
3	RECEPTION	4.50 X 3.90
4	DINING ROOM	3.50 X 4.50
5	BEDROOM 1	3.90 X 3.30
6	BEDROOM 2	4.00 X 3.80
7	BATHROOM 1	2.20 X 2.60
8	KITCHEN	2.50 X 2.70
9	TERRACE 1	1.40 X 3.20
10	TERRACE 2	1.40 X 3.30



Disclaimer:

also known as Marina 8, is surrounded by recreational and historical spaces, making it a true city with various activities to indulge in. Designed to be between Marina's lake and archaeological area at km 97, it is at the core of Marina. From the North, it is accentuated by a swimmable lake for leisure and a historic site turned open museum with Roman relics for people to take a dive into ancient history.

## ROOF

1	STAIR	2.50 X 1.30
2	LOBBY	1.50 X 5.80
3	MASTER BEDROOM	3.90 X 3.30
4	LIVING ROOM	4.00 X 3.80
5	MASTER BATHROOM	2.10 X 2.60
6	TERRACE	3.20 X 1.40



Disclaimer:

also known as Marina 8, is surrounded by recreational and historical spaces, making it a true city with various activities to indulge in. Designed to be between Marina's lake and archaeological area at km 97, it is at the core of Marina. From the North, it is accentuated by a swimmable lake for leisure and a historic site turned open museum with Roman relics for people to take a dive into ancient history.

# FH2

## FAMILY HOUSE 02

### STREET VIEW



Disclaimer:  
also known as Marina 8, is surrounded by recreational and historical spaces, making it a true city with various activities to indulge in. Designed to be between Marina's lake and archaeological area at km 97, it is at the core of Marina. From the North, it is accentuated by a swimmable lake for leisure and a historic site turned open museum with Roman relics for people to take a dive into ancient history.  
between Marina's lake and archaeological area at km 97, it is at the core of Marina. From the North, it is accentuated by a swimmable lake for leisure

# FH2

## FAMILY HOUSE 02

### GARDEN VIEW

Disclaimer:

also known as Marina 8, is surrounded by recreational and historical spaces, making it a true city with various activities to indulge in. Designed to be between Marina's lake and archaeological area at km 97, it is at the core of Marina. From the North, it is accentuated by a swimmable lake for leisure and a historic site turned open museum with Roman relics for people to take a dive into ancient history.

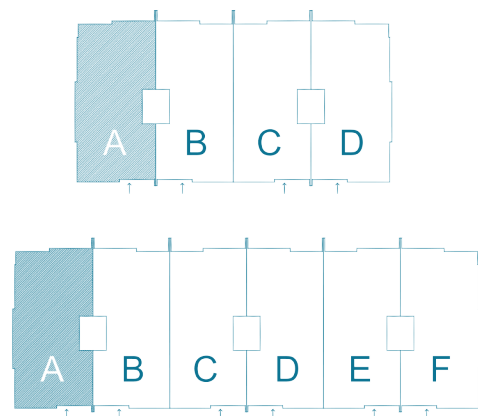
between Marina's lake and archaeological area at km 97, it is at the core of Marina. From the North, it is accentuated by a swimmable lake for leisure



# FH 02-FAMILY HOUSE 02 GARDEN DUPLEX CORNER

TOTAL BUILT UP AREA **172 SQM**

BASEMENT	76
GROUND FLOOR	96



Disclaimer:  
also known as Marina 8, is surrounded by recreational and historical spaces, making it a true city with various activities to indulge in. Designed to be between Marina's lake and archaeological area at km 97, it is at the core of Marina. From the North, it is accentuated by a swimmable lake for leisure and a historic site turned open museum with Roman relics for people to take a dive into ancient history.  
between Marina's lake and archaeological area at km 97, it is at the core of Marina. From the North, it is accentuated by a swimmable lake for leisure

## BASEMENT

1	PRIVATE LIVING ROOM	2.20 X 4.00
2	MAID ROOM	2.20 X 2.10
3	MAID BATHROOM	2.10 X 1.20
4	BATHROOM	2.30 X 1.80
5	KITCHEN	3.50 X 3.50
6	LIVING ROOM	3.60 X 4.00
7	DINING ROOM	4.00 X 3.50
8	LOBBY	5.40 X 3.50
9	TERRACE	7.50 X 1.60



## GROUND FLOOR

1	ENTRANCE	2.00 X 6.50
2	BEDROOM	4.00 X 3.60
3	MASTER BEDROOM	5.50 X 3.80
4	BEDROOM	3.60 X 4.00
5	BATHROOM	1.90 X 2.20
6	BATHROOM	2.00 X 2.50
7	FIRST FLOOR ENTRANCE	7.80 X 1.30
8	TERRACE	3.80 X 1.30



Disclaimer:  
also known as Marina 8, is surrounded by recreational and historical spaces, making it a true city with various activities to indulge in. Designed to be between Marina's lake and archaeological area at km 97, it is at the core of Marina. From the North, it is accentuated by a swimmable lake for leisure and a historic site turned open museum with Roman relics for people to take a dive into ancient history.  
between Marina's lake and archaeological area at km 97, it is at the core of Marina. From the North, it is accentuated by a swimmable lake for leisure

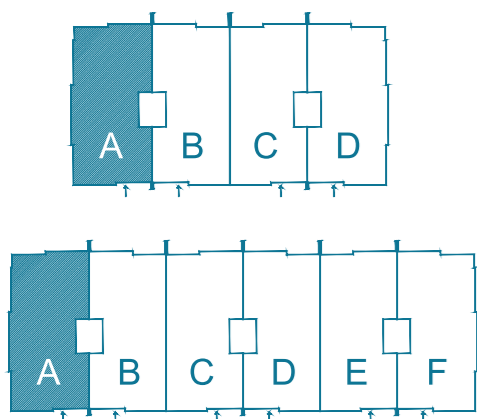
# FH 02-FAMILY HOUSE 02 ROOF DUPLEX CORNER

TOTAL BUILT UP AREA **195 SQM**

FIRST FLOOR	76
ROOF FLOOR	96

## FIRST FLOOR

1	LOBBY	1.50 X 5.40
2	LIVING ROOM	3.90 X 3.40
3	LIVING ROOM	3.90 X 1.70
4	DINING ROOM	3.90 X 3.90
5	KITCHEN	2.80 X 3.40
6	MASTER BEDROOM	7.20 X 3.60
7	BATHROOM	1.70 X 10.00
8	BATHROOM	1.50 X 2.30
9	TERRACE	1.30 X 3.40
10	TERRACE	1.30 X 3.10
11	STAIR ENTRANCE	0.90 X 1.00

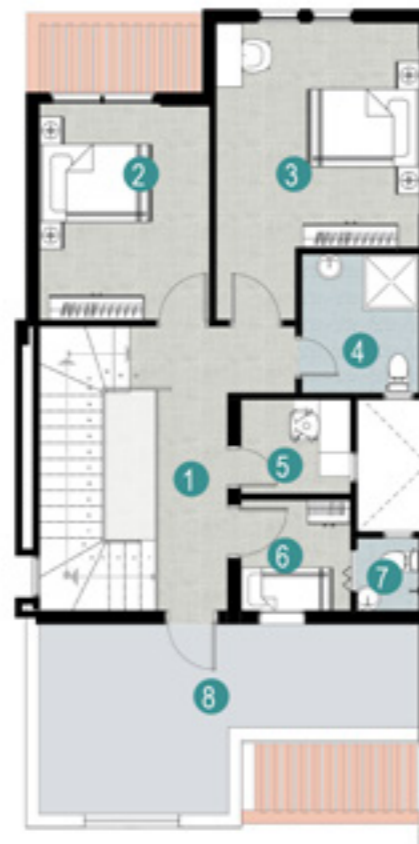


**Disclaimer:**

also known as Marina 8, is surrounded by recreational and historical spaces, making it a true city with various activities to indulge in. Designed to be between Marina's lake and archaeological area at km 97, it is at the core of Marina. From the North, it is accentuated by a swimmable lake for leisure and a historic site turned open museum with Roman relics for people to take a dive into ancient history.

## ROOF FLOOR

1	LOBBY	1.30 X 5.40
2	BEDROOM	4.00 X 3.20
3	BEDROOM	3.90 X 5.60
4	BATHROOM	2.60 X 2.40
5	OFFICE	2.00 X 1.80
6	MAID BEDROOM	2.20 X 2.10
7	MAID BATHROOM	1.20 X 1.40
8	TERRACE	7.20 X 3.60



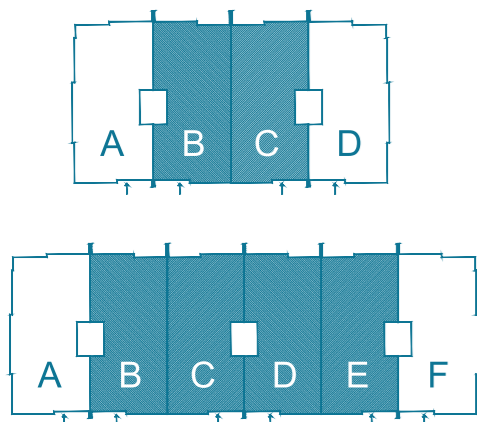
**Disclaimer:**

also known as Marina 8, is surrounded by recreational and historical spaces, making it a true city with various activities to indulge in. Designed to be between Marina's lake and archaeological area at km 97, it is at the core of Marina. From the North, it is accentuated by a swimmable lake for leisure and a historic site turned open museum with Roman relics for people to take a dive into ancient history.

# FH 02-FAMILY HOUSE 02 GARDEN DUPLEX MIDDLE

TOTAL BUILT UP AREA 172 SQM

BASEMENT	76
GROUND FLOOR	96



**Disclaimer:**

also known as Marina 8, is surrounded by recreational and historical spaces, making it a true city with various activities to indulge in. Designed to be between Marina's lake and archaeological area at km 97, it is at the core of Marina. From the North, it is accentuated by a swimmable lake for leisure and a historic site turned open museum with Roman relics for people to take a dive into ancient history.

## FH 02-FAMILY HOUSE 02

### BASEMENT

1	PRIVATE LIVING ROOM	2.20 X 4.00
2	MAID ROOM	2.20 X 2.10
3	MAID BATHROOM	2.10 X 1.20
4	BATHROOM	2.30 X 1.80
5	KITCHEN	3.50 X 3.50
6	LIVING ROOM	3.60 X 4.00
7	DINING ROOM	4.00 X 3.50
8	LOBBY	5.40 X 3.50
9	TERRACE	7.50 X 1.60



### GROUND FLOOR

1	ENTRANCE	2.00 X 6.50
2	BEDROOM	4.00 X 3.60
3	MASTER BEDROOM	5.50 X 3.80
4	BEDROOM	3.60 X 4.00
5	BATHROOM	1.90 X 2.20
6	BATHROOM	2.00 X 2.50
7	FIRST FLOOR ENTRANCE	7.80 X 1.30
8	TERRACE	3.80 X 1.30



**Disclaimer:**

also known as Marina 8, is surrounded by recreational and historical spaces, making it a true city with various activities to indulge in. Designed to be between Marina's lake and archaeological area at km 97, it is at the core of Marina. From the North, it is accentuated by a swimmable lake for leisure and a historic site turned open museum with Roman relics for people to take a dive into ancient history.

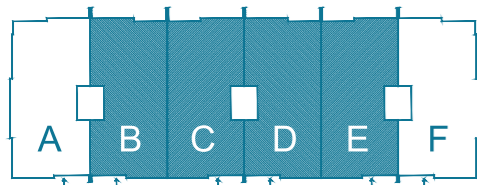
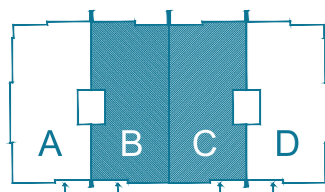
# FH 02-FAMILY HOUSE 02 GARDEN DUPLEX MIDDLE

TOTAL BUILT UP AREA **196 SQM**

FIRST FLOOR **103**  
ROOF FLOOR **93**

## FIRST FLOOR

1	ENTRANCE	1.50 X 5.40
2	LIVING ROOM	3.90 X 3.40
3	LIVING ROOM	3.90 X 1.70
4	DINING ROOM	3.90 X 3.90
5	KITCHEN	2.80 X 3.40
6	MASTER BEDROOM	7.20 X 3.60
7	BATHROOM	1.70 X 2.10
8	BATHROOM	1.50 X 2.30
9	TERRACE	1.30 X 3.40
10	TERRACE	1.30 X 1.10
11	STAIR ENTRANCE	0.90 X 1.00

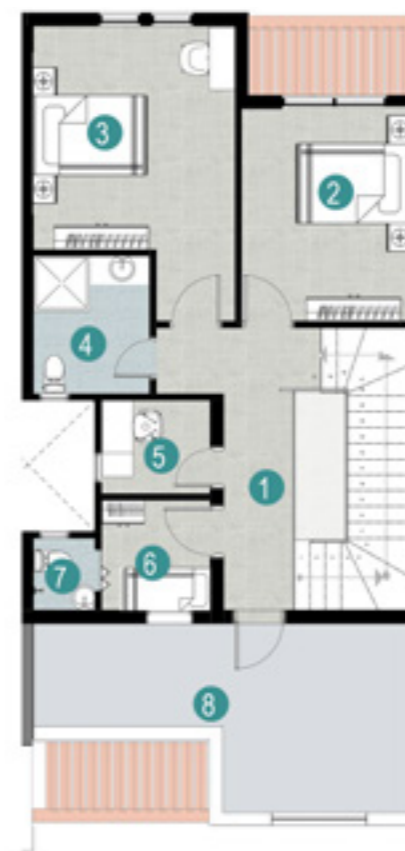


**Disclaimer:**

also known as Marina 8, is surrounded by recreational and historical spaces, making it a true city with various activities to indulge in. Designed to be between Marina's lake and archaeological area at km 97, it is at the core of Marina. From the North, it is accentuated by a swimmable lake for leisure and a historic site turned open museum with Roman relics for people to take a dive into ancient history.

## ROOF FLOOR

1	ENTRANCE	1.30 X 5.40
2	BEDROOM	4.00 X 3.20
3	BEDROOM	3.90 X 5.60
4	BATHROOM	2.60 X 2.20
5	OFFICE	2.00 X 1.80
6	MAID BEDROOM	2.20 X 2.10
7	MAID BATHROOM	1.20 X 1.40
8	TERRACE	7.20 X 3.60



**Disclaimer:**

also known as Marina 8, is surrounded by recreational and historical spaces, making it a true city with various activities to indulge in. Designed to be between Marina's lake and archaeological area at km 97, it is at the core of Marina. From the North, it is accentuated by a swimmable lake for leisure and a historic site turned open museum with Roman relics for people to take a dive into ancient history.

# TH-TOWNHOUSE MIDDLE UNIT

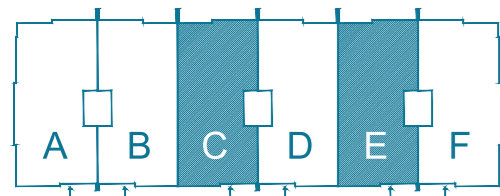
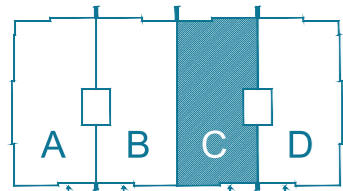
TOTAL BUILT UP AREA **214 SQM**

GROUND FLOOR **104**

FIRST FLOOR **110**

## GROUND FLOOR

1	ENTRANCE	1.85 X 2.50
2	TOILET	1.60 X 2.40
3	MAID'S BEDROOM	2.50 X 3.35
4	MAID'S BATHROOM	1.40 X 1.50
5	STAIR	2.50 X 5.30
6	CORRIDOR	1.05 X 5.30
7	KITCHEN	2.15 X 3.10
8	RECEPTION	3.60 X 5.45
9	DINING ROOM	3.60 X 4.05
10	TERRACE	1.40 X 7.20



**Disclaimer:**

also known as Marina 8, is surrounded by recreational and historical spaces, making it a true city with various activities to indulge in. Designed to be between Marina's lake and archaeological area at km 97, it is at the core of Marina. From the North, it is accentuated by a swimmable lake for leisure and a historic site turned open museum with Roman relics for people to take a dive into ancient history.

## FIRST FLOOR

1	STAIR	2.50 X 5.30
2	CORRIDOR	1.05 X 5.30
3	BEDROOM 1	3.60 X 3.60
4	BEDROOM 2	3.50 X 3.65
5	TERRACE 1	1.30 X 3.40
6	BATHROOM	2.20 X 2.50
7	LOBBY	1.30 X 3.45
8	MASTER BEDROOM	3.85 X 4.30
9	MASTER BATHROOM	2.40 X 2.60
10	BEDROOM 3	3.20 X 4.05
11	TERRACE 2	1.20 X 3.10



**Disclaimer:**

also known as Marina 8, is surrounded by recreational and historical spaces, making it a true city with various activities to indulge in. Designed to be between Marina's lake and archaeological area at km 97, it is at the core of Marina. From the North, it is accentuated by a swimmable lake for leisure and a historic site turned open museum with Roman relics for people to take a dive into ancient history.

# M8 CHALETs STREET VIEW

Disclaimer:

also known as Marina 8, is surrounded by recreational and historical spaces, making it a true city with various activities to indulge in. Designed to be between Marina's lake and archaeological area at km 97, it is at the core of Marina. From the North, it is accentuated by a swimmable lake for leisure and a historic site turned open museum with Roman relics for people to take a dive into ancient history.

between Marina's lake and archaeological area at km 97, it is at the core of Marina. From the North, it is accentuated by a swimmable lake for leisure



# OH CHALETs GARDEN VIEW

Disclaimer:

also known as Marina 8, is surrounded by recreational and historical spaces, making it a true city with various activities to indulge in. Designed to be between Marina's lake and archaeological area at km 97, it is at the core of Marina. From the North, it is accentuated by a swimmable lake for leisure and a historic site turned open museum with Roman relics for people to take a dive into ancient history.

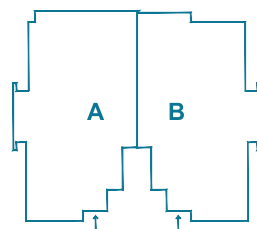
between Marina's lake and archaeological area at km 97, it is at the core of Marina. From the North, it is accentuated by a swimmable lake for leisure



# CH-CHALETs-GROUND FLOOR

A- TOTAL BUILT UP AREA 155 SQM

B- TOTAL BUILT UP AREA 155 SQM



## GROUND FLOOR (01A&01B)

1	ENTRANCE	1.45 X 1.70
2	CORRIDOR	1.40 X 4.35
3	TOILET	1.40 X 1.95
4	LAUNDRY	1.20 X 1.40
5	KITCHEN	2.45 X 2.70
6	DINING ROOM	2.40 X 4.20
7	RECEPTION	3.45 X 4.20
8	TERRACE	1.45 X 4.10
9	CORRIDOR	1.20 X 6.00
10	MASTER BEDROOM	3.60 X 4.00
11	MASTER BATHROOM	1.70 X 2.70
12	BEDROOM 1	3.60 X 3.90
13	BATHROOM	2.30 X 2.70
14	BEDROOM 2	3.60 X 3.90

**Disclaimer:**

also known as Marina 8, is surrounded by recreational and historical spaces, making it a true city with various activities to indulge in. Designed to be between Marina's lake and archaeological area at km 97, it is at the core of Marina. From the North, it is accentuated by a swimmable lake for leisure and a historic site turned open museum with Roman relics for people to take a dive into ancient history.



**Disclaimer:**

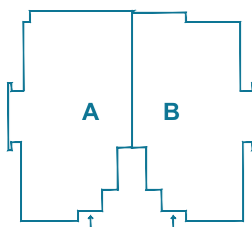
also known as Marina 8, is surrounded by recreational and historical spaces, making it a true city with various activities to indulge in. Designed to be between Marina's lake and archaeological area at km 97, it is at the core of Marina. From the North, it is accentuated by a swimmable lake for leisure and a historic site turned open museum with Roman relics for people to take a dive into ancient history.

■ OH-CHALETs

# OH-CHALETs-FIRST FLOOR

A- TOTAL BUILT UP AREA 154 SQM

B- TOTAL BUILT UP AREA 150 SQM



## FIRST FLOOR (11A)

1	ENTRANCE	1.45 X 1.70
2	CORRIDOR	1.40 X 4.35
3	TOILET	1.40 X 1.95
4	LAUNDRY	1.20 X 1.40
5	KITCHEN	2.45 X 2.70
6	DINING ROOM	2.40 X 4.20
7	RECEPTION	3.45 X 4.20
8	TERRACE	1.90 X 4.10
9	CORRIDOR	1.20 X 6.00
10	MASTER BEDROOM	4.00 X 4.50
11	MASTER BATHROOM	1.70 X 2.70
12	BEDROOM 1	3.60 X 3.90
13	BATHROOM	2.30 X 2.70
14	BEDROOM 2	3.80 X 3.90

## FIRST FLOOR (11B)

1	ENTRANCE	1.45 X 1.70
2	CORRIDOR	1.40 X 4.35
3	TOILET	1.40 X 1.95
4	LAUNDRY	1.20 X 1.40
5	KITCHEN	2.45 X 2.70
6	DINING ROOM	2.40 X 4.20
7	RECEPTION	3.45 X 4.20
8	TERRACE	1.90 X 4.10
9	CORRIDOR	1.20 X 6.00
10	MASTER BEDROOM	3.60 X 4.00
11	MASTER BATHROOM	1.70 X 2.70
12	BEDROOM 1	3.60 X 3.90
13	BATHROOM	2.30 X 2.70
14	BEDROOM 2	3.80 X 3.90

■ OH-CHALETs



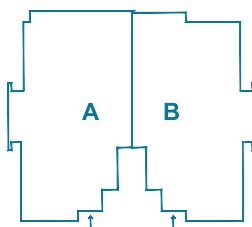
Disclaimer:  
also known as Marina 8, is surrounded by recreational and historical spaces, making it a true city with various activities to indulge in. Designed to be between Marina's lake and archaeological area at km 97, it is at the core of Marina. From the North, it is accentuated by a swimmable lake for leisure and a historic site turned open museum with Roman relics for people to take a dive into ancient history.  
between Marina's lake and archaeological area at km 97, it is at the core of Marina. From the North, it is accentuated by a swimmable lake for leisure

Disclaimer:  
also known as Marina 8, is surrounded by recreational and historical spaces, making it a true city with various activities to indulge in. Designed to be between Marina's lake and archaeological area at km 97, it is at the core of Marina. From the North, it is accentuated by a swimmable lake for leisure and a historic site turned open museum with Roman relics for people to take a dive into ancient history.  
between Marina's lake and archaeological area at km 97, it is at the core of Marina. From the North, it is accentuated by a swimmable lake for leisure

# CH-CHALETs-SECOND FLOOR

A- TOTAL BUILT UP AREA 154 SQM

B- TOTAL BUILT UP AREA 150 SQM



## SECOND FLOOR (21A)

1	ENTRANCE	1.45 X 1.70
2	CORRIDOR	1.40 X 3.65
3	TOILET	1.40 X 1.95
4	LAUNDRY	1.20 X 1.40
5	KITCHEN	3.80 X 3.90
6	STAIR	2.30 X 4.10
7	DINING ROOM	3.50 X 4.20
8	RECEPTION	4.20 X 4.80
9	TERRACE	1.90 X 4.10
10	LOBBY	1.20 X 1.70
11	BEDROOM 1	4.00 X 4.50
12	BATHROOM	1.70 X 2.70
13	BEDROOM 2	3.60 X 5.10

## SECOND FLOOR (21B)

1	ENTRANCE	1.45 X 1.70
2	CORRIDOR	1.40 X 4.35
3	TOILET	1.40 X 1.95
4	LAUNDRY	1.20 X 1.40
5	KITCHEN	3.80 X 3.90
6	STAIR	2.30 X 4.10
7	DINING ROOM	3.50 X 4.20
8	RECEPTION	4.20 X 4.80
9	TERRACE	1.90 X 4.10
10	LOBBY	1.20 X 1.70
11	BEDROOM 1	3.60 X 4.00
12	BATHROOM	1.70 X 2.95
13	BEDROOM 2	3.60 X 5.10



Disclaimer:

also known as Marina 8, is surrounded by recreational and historical spaces, making it a true city with various activities to indulge in. Designed to be between Marina's lake and archaeological area at km 97, it is at the core of Marina. From the North, it is accentuated by a swimmable lake for leisure and a historic site turned open museum with Roman relics for people to take a dive into ancient history.

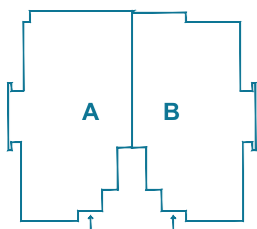
Disclaimer:

also known as Marina 8, is surrounded by recreational and historical spaces, making it a true city with various activities to indulge in. Designed to be between Marina's lake and archaeological area at km 97, it is at the core of Marina. From the North, it is accentuated by a swimmable lake for leisure and a historic site turned open museum with Roman relics for people to take a dive into ancient history.

# OH-CHALETS-PENTHOUSE

A- TOTAL BUILT UP AREA 51 SQM

B- TOTAL BUILT UP AREA 51 SQM

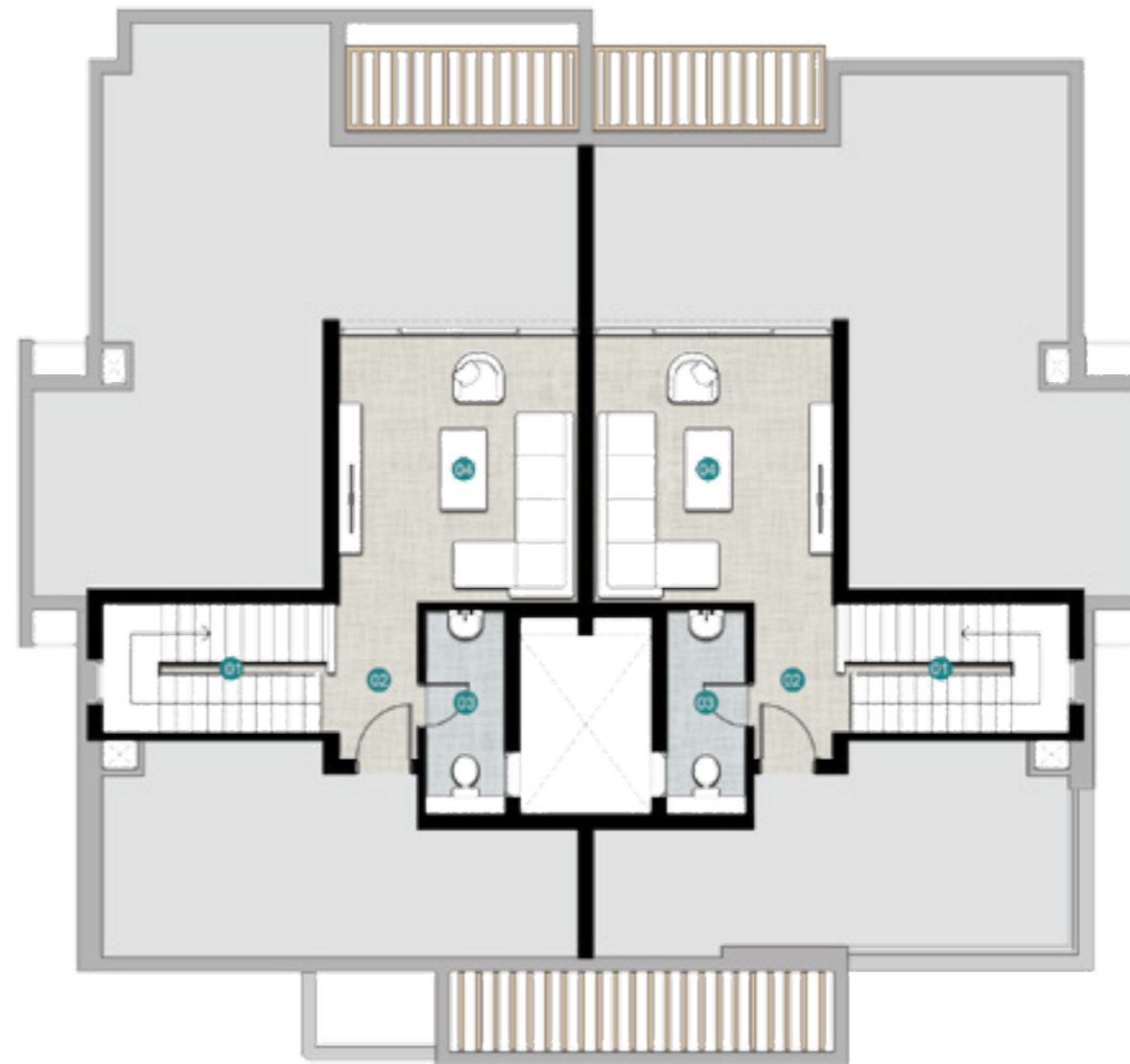


## PENTHOUSE (21A&21B)

1	STAIR	2.30 X 4.10
2	LOBBY	1.65 X 2.75
3	TOILET	1.40 X 3.60
4	LIVING ROOM	4.20 X 4.70

**Disclaimer:**

also known as Marina 8, is surrounded by recreational and historical spaces, making it a true city with various activities to indulge in. Designed to be between Marina's lake and archaeological area at km 97, it is at the core of Marina. From the North, it is accentuated by a swimmable lake for leisure and a historic site turned open museum with Roman relics for people to take a dive into ancient history.



**Disclaimer:**

also known as Marina 8, is surrounded by recreational and historical spaces, making it a true city with various activities to indulge in. Designed to be between Marina's lake and archaeological area at km 97, it is at the core of Marina. From the North, it is accentuated by a swimmable lake for leisure and a historic site turned open museum with Roman relics for people to take a dive into ancient history.

# AP

## APARTMENT BUILDING 1

### STREET VIEW

Disclaimer:  
also known as Marina 8, is surrounded by recreational and historical spaces, making it a true city with various activities to indulge in. Designed to be between Marina's lake and archaeological area at km 97, it is at the core of Marina. From the North, it is accentuated by a swimmable lake for leisure and a historic site turned open museum with Roman relics for people to take a dive into ancient history.  
between Marina's lake and archaeological area at km 97, it is at the core of Marina. From the North, it is accentuated by a swimmable lake for leisure



# AP

## APARTMENT BUILDING 1

### GARDEN VIEW

Disclaimer:

also known as Marina 8, is surrounded by recreational and historical spaces, making it a true city with various activities to indulge in. Designed to be between Marina's lake and archaeological area at km 97, it is at the core of Marina. From the North, it is accentuated by a swimmable lake for leisure and a historic site turned open museum with Roman relics for people to take a dive into ancient history.

between Marina's lake and archaeological area at km 97, it is at the core of Marina. From the North, it is accentuated by a swimmable lake for leisure



■ AP1-APARTMENT BUILDING 1

# AP1-APARTMENT BUILDING 1 GROUND FLOOR

01- TOTAL BUILT UP AREA 106 SQM

02-TOTAL BUILT UP AREA 180 SQM

03-TOTAL BUILT UP AREA 180 SQM

04-TOTAL BUILT UP AREA 106 SQM

**GROUND FLOOR (01&04)**

1	ENTRANCE	1.30 X 2.45
2	TOILET	1.30 X 2.30
3	KITCHEN	2.30 X 2.50
4	RECEPTION	4.10 X 5.70
5	DINING ROOM	3.20 X 5.70
6	TERRACE	1.90 X 3.90
7	BEDROOM	3.95 X 4.20
8	BATHROOM	1.90 X 2.30

**GROUND FLOOR (02&03)**

1	ENTRANCE	1.60 X 1.65
2	LOBBY	1.40X 2.35
3	TOILET	1.30 X 2.55
4	DINING ROOM	2.75 X 5.00
5	RECEPTION	4.40 X 5.00
6	TERRACE	2.00 X 4.90
7	CORRIDOR	1.10 X 5.35
8	KITCHEN	2.80 X 3.00
9	BEDROOM 1	4.00 X 4.70
10	BEDROOM 2	3.95 X 4.70
11	MASTER BEDROOM	4.15 X 4.65
12	MASTER DRESSING	1.75 X 2.60
13	MASTER BATHROOM	2.00 X 2.60
14	BATHROOM	2.10 X 2.80

Disclaimer:

also known as Marina 8, is surrounded by recreational and historical spaces, making it a true city with various activities to indulge in. Designed to be between Marina's lake and archaeological area at km 97, it is at the core of Marina. From the North, it is accentuated by a swimmable lake for leisure and a historic site turned open museum with Roman relics for people to take a dive into ancient history. between Marina's lake and archaeological area at km 97, it is at the core of Marina. From the North, it is accentuated by a swimmable lake for leisure

■ AP1-APARTMENT BUILDING 1



Disclaimer:

also known as Marina 8, is surrounded by recreational and historical spaces, making it a true city with various activities to indulge in. Designed to be between Marina's lake and archaeological area at km 97, it is at the core of Marina. From the North, it is accentuated by a swimmable lake for leisure and a historic site turned open museum with Roman relics for people to take a dive into ancient history. between Marina's lake and archaeological area at km 97, it is at the core of Marina. From the North, it is accentuated by a swimmable lake for leisure

# AP1-APARTMENT BUILDING 1 FIRST FLOOR

11-TOTAL BUILT UP AREA 106 SQM

12-TOTAL BUILT UP AREA 180 SQM

13-TOTAL BUILT UP AREA 180 SQM

14-TOTAL BUILT UP AREA 106 SQM

## FIRST FLOOR (11)

1	ENTRANCE	1.30 X 2.45
2	TOILET	1.30 X 2.30
3	KITCHEN	2.30 X 2.50
4	RECEPTION	4.10 X 6.00
5	DINING ROOM	3.45 X 6.00
6	TERRACE	1.70 X 3.10
7	BEDROOM	4.00 X 4.20
8	BATHROOM	1.90 X 2.30

## FIRST FLOOR (12)

1	ENTRANCE	1.80 X 3.00
2	TOILET	1.75 X 1.90
3	DINING ROOM	3.85 X 5.00
4	RECEPTION	4.40 X 5.00
5	TERRACE	1.90 X 4.90
6	CORRIDOR	1.10 X 5.35
7	KITCHEN	2.80 X 3.00
8	BEDROOM 1	4.00 X 4.95
9	BEDROOM 2	3.95 X 4.95
10	MASTER BEDROOM	4.15 X 4.65
11	MASTER DRESSING	1.85 X 2.60
12	MASTER BATHROOM	2.00 X 2.60
13	BATHROOM	2.10 X 2.80

## FIRST FLOOR (13)

1	ENTRANCE	1.80 X 3.00
2	TOILET	1.80 X 1.90
3	DINING ROOM	3.85 X 5.00
4	RECEPTION	4.40 X 5.00
5	TERRACE	1.90 X 4.90
6	CORRIDOR	1.10 X 5.35
7	KITCHEN	2.80 X 3.00
8	BEDROOM 1	4.00 X 4.70
9	BEDROOM 2	4.00 X 4.70
10	MASTER BEDROOM	4.15 X 4.65
11	MASTER DRESSING	1.75 X 2.60
12	MASTER BATHROOM	2.00 X 2.60
13	BATHROOM	2.10 X 2.80

## FIRST FLOOR (14)

1	ENTRANCE	1.30 X 2.40
2	TOILET	1.30 X 2.30
3	KITCHEN	2.30 X 2.50
4	RECEPTION	4.10 X 5.70
5	DINING ROOM	3.20 X 5.70
6	TERRACE	1.85 X 3.10
7	BEDROOM	3.95 X 4.20
8	BATHROOM	1.90 X 2.30

Disclaimer:

also known as Marina 8, is surrounded by recreational and historical spaces, making it a true city with various activities to indulge in. Designed to be between Marina's lake and archaeological area at km 97, it is at the core of Marina. From the North, it is accentuated by a swimmable lake for leisure and a historic site turned open museum with Roman relics for people to take a dive into ancient history.

between Marina's lake and archaeological area at km 97, it is at the core of Marina. From the North, it is accentuated by a swimmable lake for leisure



Disclaimer:

also known as Marina 8, is surrounded by recreational and historical spaces, making it a true city with various activities to indulge in. Designed to be between Marina's lake and archaeological area at km 97, it is at the core of Marina. From the North, it is accentuated by a swimmable lake for leisure and a historic site turned open museum with Roman relics for people to take a dive into ancient history.

between Marina's lake and archaeological area at km 97, it is at the core of Marina. From the North, it is accentuated by a swimmable lake for leisure

# AP1-APARTMENT BUILDING 1 SECOND FLOOR

21- TOTAL BUILT UP AREA 106 SQM

22-TOTAL BUILT UP AREA 187 SQM

23-TOTAL BUILT UP AREA 187 SQM

24-TOTAL BUILT UP AREA 106 SQM

## AP1-APARTMENT BUILDING 1

### SECOND FLOOR (21&24)

1	ENTRANCE	1.30 X 2.45
2	TOILET	1.30 X 2.30
3	KITCHEN	2.30 X 2.50
4	RECEPTION	4.10 X 6.00
5	DINING ROOM	3.40 X 6.00
6	TERRACE	1.65 X 3.10
7	BEDROOM	3.95 X 4.20
8	BATHROOM	1.90 X 2.30

### SECOND FLOOR (22)

1	ENTRANCE	1.80 X 3.00
2	TOILET	1.75 X 1.90
3	DINING ROOM	3.85 X 5.00
4	RECEPTION	4.40 X 5.00
5	TERRACE	1.95 X 4.90
6	CORRIDOR	1.10 X 5.35
7	KITCHEN	2.80 X 3.00
8	BEDROOM 1	4.00 X 4.95
9	BEDROOM 2	3.95 X 4.95
10	MASTER BEDROOM	4.15 X 4.65
11	MASTER DRESSING	1.75 X 2.60
12	MASTER BATHROOM	2.00 X 2.60
13	BATHROOM	2.10 X 2.80

### SECOND FLOOR (23)

1	ENTRANCE	1.80 X 3.00
2	TOILET	1.75 X 1.90
3	DINING ROOM	3.85 X 5.00
4	RECEPTION	4.40 X 5.00
5	TERRACE	1.50 X 4.90
6	CORRIDOR	1.10 X 5.35
7	KITCHEN	2.80 X 3.00
8	BEDROOM 1	4.00 X 4.95
9	BEDROOM 2	3.95 X 4.95
10	MASTER BEDROOM	4.15 X 4.65
11	MASTER DRESSING	1.75 X 2.60
12	MASTER BATHROOM	2.00 X 2.60
13	BATHROOM	2.10 X 2.80



## AP1-APARTMENT BUILDING 1

Disclaimer:

also known as Marina 8, is surrounded by recreational and historical spaces, making it a true city with various activities to indulge in. Designed to be between Marina's lake and archaeological area at km 97, it is at the core of Marina. From the North, it is accentuated by a swimmable lake for leisure and a historic site turned open museum with Roman relics for people to take a dive into ancient history.

between Marina's lake and archaeological area at km 97, it is at the core of Marina. From the North, it is accentuated by a swimmable lake for leisure

Disclaimer:

also known as Marina 8, is surrounded by recreational and historical spaces, making it a true city with various activities to indulge in. Designed to be between Marina's lake and archaeological area at km 97, it is at the core of Marina. From the North, it is accentuated by a swimmable lake for leisure and a historic site turned open museum with Roman relics for people to take a dive into ancient history.

between Marina's lake and archaeological area at km 97, it is at the core of Marina. From the North, it is accentuated by a swimmable lake for leisure

# AP1-APARTMENT BUILDING 1 SECOND FLOOR

21- TOTAL BUILT UP AREA 106 SQM

22-TOTAL BUILT UP AREA 187 SQM

23-TOTAL BUILT UP AREA 187 SQM

24-TOTAL BUILT UP AREA 106 SQM

## THIRD FLOOR (31,34)

1	ENTRANCE	1.30 X 2.40
2	TOILET	1.30 X 2.30
3	KITCHEN	2.30 X 2.50
4	RECEPTION	4.10 X 6.00
5	DINING ROOM	3.40 X 6.00
6	TERRACE	1.65 X 3.10
7	BEDROOM	3.95 X 4.20
8	BATHROOM	1.90 X 2.30

## THIRD FLOOR (32)

1	ENTRANCE	1.80 X 3.00
2	TOILET	1.75 X 1.90
3	DINING ROOM	3.85 X 5.00
4	RECEPTION	4.40 X 5.00
5	TERRACE	1.95 X 4.90
6	CORRIDOR	1.10 X 5.35
7	KITCHEN	2.80 X 3.00
8	BEDROOM 1	4.00 X 4.95
9	BEDROOM 2	3.95 X 4.95
10	MASTER BEDROOM	4.15 X 4.65
11	MASTER DRESSING	1.75 X 2.60
12	MASTER BATHROOM	2.00 X 2.60
13	BATHROOM	2.10 X 2.80

## THIRD FLOOR (33)

1	ENTRANCE	1.80 X 3.00
2	TOILET	1.75 X 1.90
3	DINING ROOM	3.85 X 5.00
4	RECEPTION	4.40 X 5.00
5	TERRACE	1.95 X 4.90
6	CORRIDOR	1.10 X 5.35
7	KITCHEN	2.80 X 3.00
8	BEDROOM 1	4.00 X 4.95
9	BEDROOM 2	3.95 X 4.95
10	MASTER BEDROOM	4.15 X 4.65
11	MASTER DRESSING	1.75 X 2.60
12	MASTER BATHROOM	2.00 X 2.60
13	BATHROOM	2.10 X 2.80



Disclaimer:

also known as Marina 8, is surrounded by recreational and historical spaces, making it a true city with various activities to indulge in. Designed to be between Marina's lake and archaeological area at km 97, it is at the core of Marina. From the North, it is accentuated by a swimmable lake for leisure and a historic site turned open museum with Roman relics for people to take a dive into ancient history.

between Marina's lake and archaeological area at km 97, it is at the core of Marina. From the North, it is accentuated by a swimmable lake for leisure

Disclaimer:

also known as Marina 8, is surrounded by recreational and historical spaces, making it a true city with various activities to indulge in. Designed to be between Marina's lake and archaeological area at km 97, it is at the core of Marina. From the North, it is accentuated by a swimmable lake for leisure and a historic site turned open museum with Roman relics for people to take a dive into ancient history.

between Marina's lake and archaeological area at km 97, it is at the core of Marina. From the North, it is accentuated by a swimmable lake for leisure

# AP1-APARTMENT BUILDING 1 FOURTH FLOOR

11- TOTAL BUILT UP AREA 107 SQM

12-TOTAL BUILT UP AREA 189 SQM

13-TOTAL BUILT UP AREA 189 SQM

14-TOTAL BUILT UP AREA 106 SQM

**FOURTH FLOOR (41)**

1	ENTRANCE	1.30 X 2.40
2	TOILET	1.30 X 2.30
3	KITCHEN	2.30 X 2.50
4	RECEPTION	4.10 X 6.00
5	DINING ROOM	3.40 X 6.00
6	TERRACE	1.65 X 3.10
7	BEDROOM	3.95 X 4.20
8	BATHROOM	1.90 X 2.30

**FOURTH FLOOR (42)**

1	ENTRANCE	1.50 X 2.95
2	TOILET	1.45 X 1.95
3	STAIR	3.00 X 4.10
4	DINING ROOM	3.95 X 4.15
5	RECEPTION	4.40 X 5.00
6	TERRACE	1.95 X 4.90
7	CORRIDOR	1.10 X 5.35
8	KITCHEN	2.80 X 3.00
9	BEDROOM 1	4.00 X 4.95
10	BEDROOM 2	3.95 X 4.95
11	MASTER BEDROOM	4.15 X 4.65
12	MASTER DRESSING	1.75 X 2.60
13	MASTER BATHROOM	2.00 X 2.60
14	BATHROOM	2.10 X 2.80

**FOURTH FLOOR (43)**

1	ENTRANCE	1.50 X 2.95
2	TOILET	1.50 X 1.95
3	STAIR	3.00 X 4.10
4	DINING ROOM	3.95 X 4.15
5	RECEPTION	4.40 X 5.00
6	TERRACE	1.95 X 4.90
7	CORRIDOR	1.10 X 5.35
8	KITCHEN	2.80 X 3.00
9	BEDROOM 1	4.00 X 4.95
10	BEDROOM 2	3.95 X 4.95
11	MASTER BEDROOM	4.15 X 4.65
12	MASTER DRESSING	1.75 X 2.60
13	MASTER BATHROOM	2.00 X 2.60
14	BATHROOM	2.10 X 2.80

**FOURTH FLOOR (44)**

1	ENTRANCE	1.30 X 2.40
2	TOILET	1.30 X 2.30
3	KITCHEN	2.30 X 2.50
4	RECEPTION	4.10 X 6.00
5	DINING ROOM	3.40 X 6.00
6	TERRACE	1.65 X 3.10
7	BEDROOM	3.95 X 4.20
8	BATHROOM	1.90 X 2.30

Disclaimer:  
also known as Marina 8, is surrounded by recreational and historical spaces, making it a true city with various activities to indulge in. Designed to be between Marina's lake and archaeological area at km 97, it is at the core of Marina. From the North, it is accentuated by a swimmable lake for leisure and a historic site turned open museum with Roman relics for people to take a dive into ancient history.  
between Marina's lake and archaeological area at km 97, it is at the core of Marina. From the North, it is accentuated by a swimmable lake for leisure



Disclaimer:  
also known as Marina 8, is surrounded by recreational and historical spaces, making it a true city with various activities to indulge in. Designed to be between Marina's lake and archaeological area at km 97, it is at the core of Marina. From the North, it is accentuated by a swimmable lake for leisure and a historic site turned open museum with Roman relics for people to take a dive into ancient history.  
between Marina's lake and archaeological area at km 97, it is at the core of Marina. From the North, it is accentuated by a swimmable lake for leisure

# AP1-APARTMENT BUILDING 1 PENTHOUSE

42- TOTAL BUILT UP AREA 65 SQM

43-TOTAL BUILT UP AREA 65 SQM

## PENTHOUSE (42&43)

1	STAIR	2.90 X 4.10
2	LIVING ROOM	3.95 X 5.25
3	TOILET	1.50 X 5.00
4	BEDROOM	3.75 X 4.00

**Disclaimer:**

also known as Marina 8, is surrounded by recreational and historical spaces, making it a true city with various activities to indulge in. Designed to be between Marina's lake and archaeological area at km 97, it is at the core of Marina. From the North, it is accentuated by a swimmable lake for leisure and a historic site turned open museum with Roman relics for people to take a dive into ancient history.

between Marina's lake and archaeological area at km 97, it is at the core of Marina. From the North, it is accentuated by a swimmable lake for leisure



**Disclaimer:**

also known as Marina 8, is surrounded by recreational and historical spaces, making it a true city with various activities to indulge in. Designed to be between Marina's lake and archaeological area at km 97, it is at the core of Marina. From the North, it is accentuated by a swimmable lake for leisure and a historic site turned open museum with Roman relics for people to take a dive into ancient history.

between Marina's lake and archaeological area at km 97, it is at the core of Marina. From the North, it is accentuated by a swimmable lake for leisure

# AP2

## APARTMENT BUILDING 2

### STREET VIEW



Disclaimer:  
also known as Marina 8, is surrounded by recreational and historical spaces, making it a true city with various activities to indulge in. Designed to be between Marina's lake and archaeological area at km 97, it is at the core of Marina. From the North, it is accentuated by a swimmable lake for leisure and a historic site turned open museum with Roman relics for people to take a dive into ancient history.  
between Marina's lake and archaeological area at km 97, it is at the core of Marina. From the North, it is accentuated by a swimmable lake for leisure

# AP2

## APARTMENT BUILDING 2

### GARDEN VIEW

Disclaimer:

also known as Marina 8, is surrounded by recreational and historical spaces, making it a true city with various activities to indulge in. Designed to be between Marina's lake and archaeological area at km 97, it is at the core of Marina. From the North, it is accentuated by a swimmable lake for leisure and a historic site turned open museum with Roman relics for people to take a dive into ancient history.

between Marina's lake and archaeological area at km 97, it is at the core of Marina. From the North, it is accentuated by a swimmable lake for leisure



# AP2-APARTMENT BUILDING 2 GROUND FLOOR

01- TOTAL BUILT UP AREA 121 SQM

02-TOTAL BUILT UP AREA 149 SQM

03-TOTAL BUILT UP AREA 151 SQM

04-TOTAL BUILT UP AREA 138 SQM

## AP2-APARTMENT BUILDING 2

### GROUND FLOOR (01)

1	DINING ROOM	2.30 X 6.10
2	RECEPTION	3.10 X 6.10
3	LOBBY 1	1.20 X 1.70
4	TOILET	1.70 X 1.70
5	KITCHEN	2.20 X 3.60
6	LOBBY 2	1.25 X 1.65
7	BEDROOM 1	3.60 X 4.75
8	BATHROOM	2.25 X 2.30
9	BEDROOM 2	3.55 X 4.00
10	TERRACE	1.55 X 6.50

### GROUND FLOOR (02)

1	DINING ROOM	3.45 X 4.80
2	RECEPTION	5.05 X 6.35
3	TERRACE	2.05 X 6.20
4	CORRIDOR	1.10 X 5.05
5	KITCHEN	2.15 X 3.40
6	BATHROOM	1.90 X 2.20
7	BEDROOM 1	3.60 X 4.90
8	MASTER BEDROOM	3.55 X 3.80
9	MASTER DRESSING	1.70 X 2.45
10	MASTER BATHROOM	1.95 X 2.70

### GROUND FLOOR (03)

1	DINING ROOM	3.80 X 4.80
2	RECEPTION	5.05 X 6.35
3	TERRACE	2.05 X 6.20
4	CORRIDOR	1.10 X 5.05
5	KITCHEN	2.15 X 3.40
6	BATHROOM	1.70 X 2.20
7	BEDROOM 1	3.60 X 4.90
8	MASTER BEDROOM	3.60 X 3.80
9	MASTER DRESSING	1.70 X 2.30
10	MASTER BATHROOM	2.00 X 2.65

### GROUND FLOOR (04)

1	DINING ROOM	3.75 X 4.80
2	RECEPTION	5.10 X 4.80
3	CORRIDOR	1.10 X 5.05
4	KITCHEN	2.15 X 3.40
5	BEDROOM 1	3.60 X 4.90
6	MASTER BEDROOM	3.60 X 3.80
7	MASTER DRESSING	1.70 X 2.25
8	MASTER BATHROOM	2.00 X 2.70
9	BATHROOM	1.70 X 2.20
10	TERRACE	1.95 X 4.30

## AP2-APARTMENT BUILDING 2



Disclaimer:

also known as Marina 8, is surrounded by recreational and historical spaces, making it a true city with various activities to indulge in. Designed to be between Marina's lake and archaeological area at km 97, it is at the core of Marina. From the North, it is accentuated by a swimmable lake for leisure and a historic site turned open museum with Roman relics for people to take a dive into ancient history.

between Marina's lake and archaeological area at km 97, it is at the core of Marina. From the North, it is accentuated by a swimmable lake for leisure

Disclaimer:

also known as Marina 8, is surrounded by recreational and historical spaces, making it a true city with various activities to indulge in. Designed to be between Marina's lake and archaeological area at km 97, it is at the core of Marina. From the North, it is accentuated by a swimmable lake for leisure and a historic site turned open museum with Roman relics for people to take a dive into ancient history.

between Marina's lake and archaeological area at km 97, it is at the core of Marina. From the North, it is accentuated by a swimmable lake for leisure

# AP2-APARTMENT BUILDING 2 FIRST FLOOR

11- TOTAL BUILT UP AREA 141 SQM

12-TOTAL BUILT UP AREA 153 SQM

13-TOTAL BUILT UP AREA 150 SQM

14-TOTAL BUILT UP AREA 138 SQM

## AP2-APARTMENT BUILDING 2

### GROUND FLOOR (11)

1	DINING ROOM	3.75 X 4.80
2	RECEPTION	4.80 X 5.10
3	CORRIDOR	1.10 X 5.05
4	KITCHEN	2.15 X 2.80
5	BEDROOM 1	3.60 X 5.15
6	MASTER BEDROOM	3.75 X 4.05
7	MASTER DRESSING	1.70 X 2.30
8	MASTER BATHROOM	1.95 X 2.70
9	BATHROOM	1.90 X 2.15
10	TERRACE	1.80 X 4.20

### GROUND FLOOR (12)

1	DINING ROOM	3.80 X 4.80
2	RECEPTION	5.05 X 6.30
3	TERRACE	1.80 X 6.15
4	CORRIDOR	1.10 X 5.05
5	KITCHEN	2.20 X 3.40
6	BATHROOM	1.90 X 2.20
7	BEDROOM 1	3.60 X 5.15
8	MASTER BEDROOM	3.55 X 4.05
9	MASTER DRESSING	1.70 X 2.30
10	MASTER BATHROOM	1.95 X 2.55

### GROUND FLOOR (13)

1	DINING ROOM	3.80 X 4.80
2	RECEPTION	5.05 X 6.30
3	TERRACE	1.80 X 6.20
4	CORRIDOR	1.10 X 5.05
5	KITCHEN	2.20 X 3.40
6	BATHROOM	1.70 X 2.20
7	BEDROOM 1	3.60 X 4.90
8	MASTER BEDROOM	3.55 X 3.80
9	MASTER DRESSING	1.70 X 2.30
10	MASTER BATHROOM	2.15 X 2.55

### GROUND FLOOR (14)

1	DINING ROOM	3.75 X 4.80
2	RECEPTION	4.80 X 5.10
3	CORRIDOR	1.10 X 5.05
4	KITCHEN	2.20 X 3.40
5	BEDROOM 1	3.60 X 4.90
6	MASTER BEDROOM	3.75 X 3.80
7	MASTER DRESSING	1.70 X 2.25
8	MASTER BATHROOM	2.15 X 2.70
9	BATHROOM	1.70 X 2.20
10	TERRACE	1.80 X 4.40

## AP2-APARTMENT BUILDING 2



Disclaimer:  
also known as Marina 8, is surrounded by recreational and historical spaces, making it a true city with various activities to indulge in. Designed to be between Marina's lake and archaeological area at km 97, it is at the core of Marina. From the North, it is accentuated by a swimmable lake for leisure and a historic site turned open museum with Roman relics for people to take a dive into ancient history.  
between Marina's lake and archaeological area at km 97, it is at the core of Marina. From the North, it is accentuated by a swimmable lake for leisure

Disclaimer:  
also known as Marina 8, is surrounded by recreational and historical spaces, making it a true city with various activities to indulge in. Designed to be between Marina's lake and archaeological area at km 97, it is at the core of Marina. From the North, it is accentuated by a swimmable lake for leisure and a historic site turned open museum with Roman relics for people to take a dive into ancient history.  
between Marina's lake and archaeological area at km 97, it is at the core of Marina. From the North, it is accentuated by a swimmable lake for leisure

# AP2-APARTMENT BUILDING 2 SECOND & THIRD FLOOR

21,31- TOTAL BUILT UP AREA 141 SQM

12-TOTAL BUILT UP AREA 152 SQM

13-TOTAL BUILT UP AREA 151 SQM

14-TOTAL BUILT UP AREA 141 SQM

**SECOND & THIRD FLOOR (21&31)**

1	DINING ROOM	3.75 X 4.80
2	RECEPTION	4.80 X 5.10
3	CORRIDOR	1.10 X 5.05
4	KITCHEN	2.15 X 3.40
5	BEDROOM 1	3.60 X 5.15
6	MASTER BEDROOM	3.75 X 4.05
7	MASTER DRESSING	1.70 X 2.30
8	MASTER BATHROOM	1.95 X 2.70
9	BATHROOM	1.90 X 2.20
10	TERRACE	1.80 X 4.20

**SECOND & THIRD FLOOR (22&32)**

1	DINING ROOM	3.80 X 4.80
2	RECEPTION	5.05 X 6.30
3	TERRACE	1.80 X 6.20
4	CORRIDOR	1.10 X 5.05
5	KITCHEN	2.15 X 3.40
6	BATHROOM	1.90 X 2.20
7	BEDROOM 1	3.60 X 5.15
8	MASTER BEDROOM	3.75 X 4.05
9	MASTER DRESSING	1.70 X 2.30
10	MASTER BATHROOM	1.95 X 2.70

**SECOND & THIRD FLOOR (23&33)**

1	DINING ROOM	3.80 X 4.80
2	RECEPTION	5.05 X 6.30
3	TERRACE	1.80 X 6.15
4	CORRIDOR	1.10 X 5.05
5	KITCHEN	2.15 X 3.40
6	BATHROOM	1.90 X 2.20
7	BEDROOM 1	3.60 X 5.15
8	MASTER BEDROOM	3.75 X 4.05
9	MASTER DRESSING	1.70 X 2.30
10	MASTER BATHROOM	1.95 X 2.65

**SECOND & THIRD FLOOR (24&34)**

1	DINING ROOM	3.75 X 4.80
2	RECEPTION	4.80 X 5.10
3	CORRIDOR	1.10 X 5.05
4	KITCHEN	2.15 X 3.40
5	BEDROOM 1	3.60 X 5.15
6	MASTER BEDROOM	3.60 X 4.05
7	MASTER DRESSING	1.70 X 2.25
8	MASTER BATHROOM	1.95 X 2.65
9	BATHROOM	1.90 X 2.20
10	TERRACE	1.80 X 5.05



Disclaimer:

also known as Marina 8, is surrounded by recreational and historical spaces, making it a true city with various activities to indulge in. Designed to be between Marina's lake and archaeological area at km 97, it is at the core of Marina. From the North, it is accentuated by a swimmable lake for leisure and a historic site turned open museum with Roman relics for people to take a dive into ancient history.

between Marina's lake and archaeological area at km 97, it is at the core of Marina. From the North, it is accentuated by a swimmable lake for leisure

Disclaimer:

also known as Marina 8, is surrounded by recreational and historical spaces, making it a true city with various activities to indulge in. Designed to be between Marina's lake and archaeological area at km 97, it is at the core of Marina. From the North, it is accentuated by a swimmable lake for leisure and a historic site turned open museum with Roman relics for people to take a dive into ancient history.

between Marina's lake and archaeological area at km 97, it is at the core of Marina. From the North, it is accentuated by a swimmable lake for leisure

# AP2-APARTMENT BUILDING 2 FOURTH FLOOR

41- TOTAL BUILT UP AREA 141 SQM

42-TOTAL BUILT UP AREA 152 SQM

43-TOTAL BUILT UP AREA 151 SQM

44-TOTAL BUILT UP AREA 141 SQM

**FOURTH FLOOR(41)**

1	DINING ROOM	2.55 X 3.65
2	STAIR	3.40 X 3.75
3	RECEPTION	4.80 X 5.10
4	CORRIDOR	1.10 X 5.05
5	KITCHEN	2.20 X 3.40
6	BEDROOM 1	3.60 X 5.15
7	MASTER BEDROOM	3.85 X 4.30
8	MASTER DRESSING	1.70 X 2.30
9	MASTER BATHROOM	1.95 X 2.70
10	BATHROOM	1.90 X 2.20
11	TERRACE	1.80 X 4.45

**FOURTH FLOOR (42)**

1	DINING ROOM	3.80 X 4.80
2	RECEPTION	5.05 X 5.10
3	STAIR	3.20 X 5.05
4	TERRACE	1.80 X 6.20
5	CORRIDOR	1.10 X 5.05
6	KITCHEN	2.20 X 3.40
7	BATHROOM	1.90 X 2.20
8	BEDROOM 1	3.60 X 5.15
9	MASTER BEDROOM	3.75 X 4.05
10	MASTER DRESSING	1.70 X 2.45
11	MASTER BATHROOM	1.95 X 2.70

**FOURTH FLOOR (43)**

1	DINING ROOM	3.80 X 4.80
2	RECEPTION	5.05 X 5.10
3	STAIR	3.20 X 5.05
4	TERRACE	1.80 X 6.15
5	CORRIDOR	1.10 X 5.05
6	KITCHEN	2.20 X 3.40
7	BATHROOM	1.90 X 2.20
8	BEDROOM 1	3.60 X 5.15
9	MASTER BEDROOM	3.75 X 4.05
10	MASTER DRESSING	1.70 X 2.30
11	MASTER BATHROOM	1.95 X 2.70

**FOURTH FLOOR(44)**

1	DINING ROOM	2.55 X 3.65
2	STAIR	3.40 X 3.75
3	RECEPTION	4.80 X 5.10
4	CORRIDOR	1.10 X 5.05
5	KITCHEN	2.20 X 3.40
6	BEDROOM 1	3.60 X 5.15
7	MASTER BEDROOM	3.75 X 4.05
8	MASTER DRESSING	1.70 X 2.25
9	MASTER BATHROOM	1.95 X 2.65
10	BATHROOM	1.90 X 2.20
11	TERRACE	1.80 X 5.05



# AP2-APARTMENT BUILDING 2 PENTHOUSE

41&44- TOTAL BUILT UP AREA 181 SQM

42&43-TOTAL BUILT UP AREA 215 SQM

13-TOTAL BUILT UP AREA 151 SQM

14-TOTAL BUILT UP AREA 141 SQM

## PENTHOUSE (41&44)

1	STAIR	2.35 X 3.95
2	LIVING ROOM	3.55 X 5.10
3	BATHROOM	1.40 X 3.65

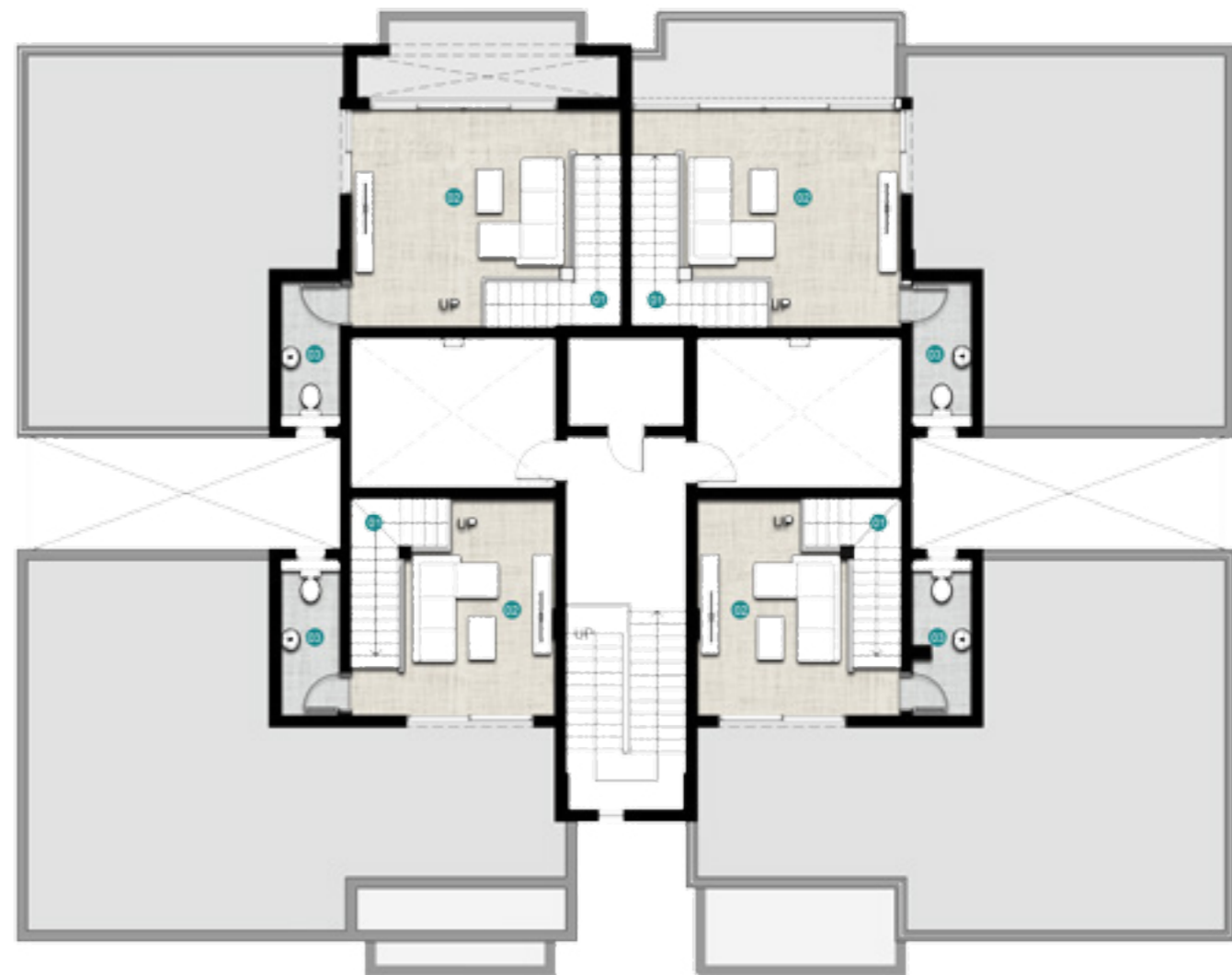
## PENTHOUSE (42&43)

1	STAIR	3.25 X 5.05
2	LIVING ROOM	5.10 X 5.10
3	BATHROOM	1.40 X 3.40

Disclaimer:

also known as Marina 8, is surrounded by recreational and historical spaces, making it a true city with various activities to indulge in. Designed to be between Marina's lake and archaeological area at km 97, it is at the core of Marina. From the North, it is accentuated by a swimmable lake for leisure and a historic site turned open museum with Roman relics for people to take a dive into ancient history.

between Marina's lake and archaeological area at km 97, it is at the core of Marina. From the North, it is accentuated by a swimmable lake for leisure



Disclaimer:

also known as Marina 8, is surrounded by recreational and historical spaces, making it a true city with various activities to indulge in. Designed to be between Marina's lake and archaeological area at km 97, it is at the core of Marina. From the North, it is accentuated by a swimmable lake for leisure and a historic site turned open museum with Roman relics for people to take a dive into ancient history.

between Marina's lake and archaeological area at km 97, it is at the core of Marina. From the North, it is accentuated by a swimmable lake for leisure

M8<sup>®</sup>  
*By the lake*



M8

SE-DEVELOPERS.COM

19352 @SAUDIEGYPTIANDEVELOPERS