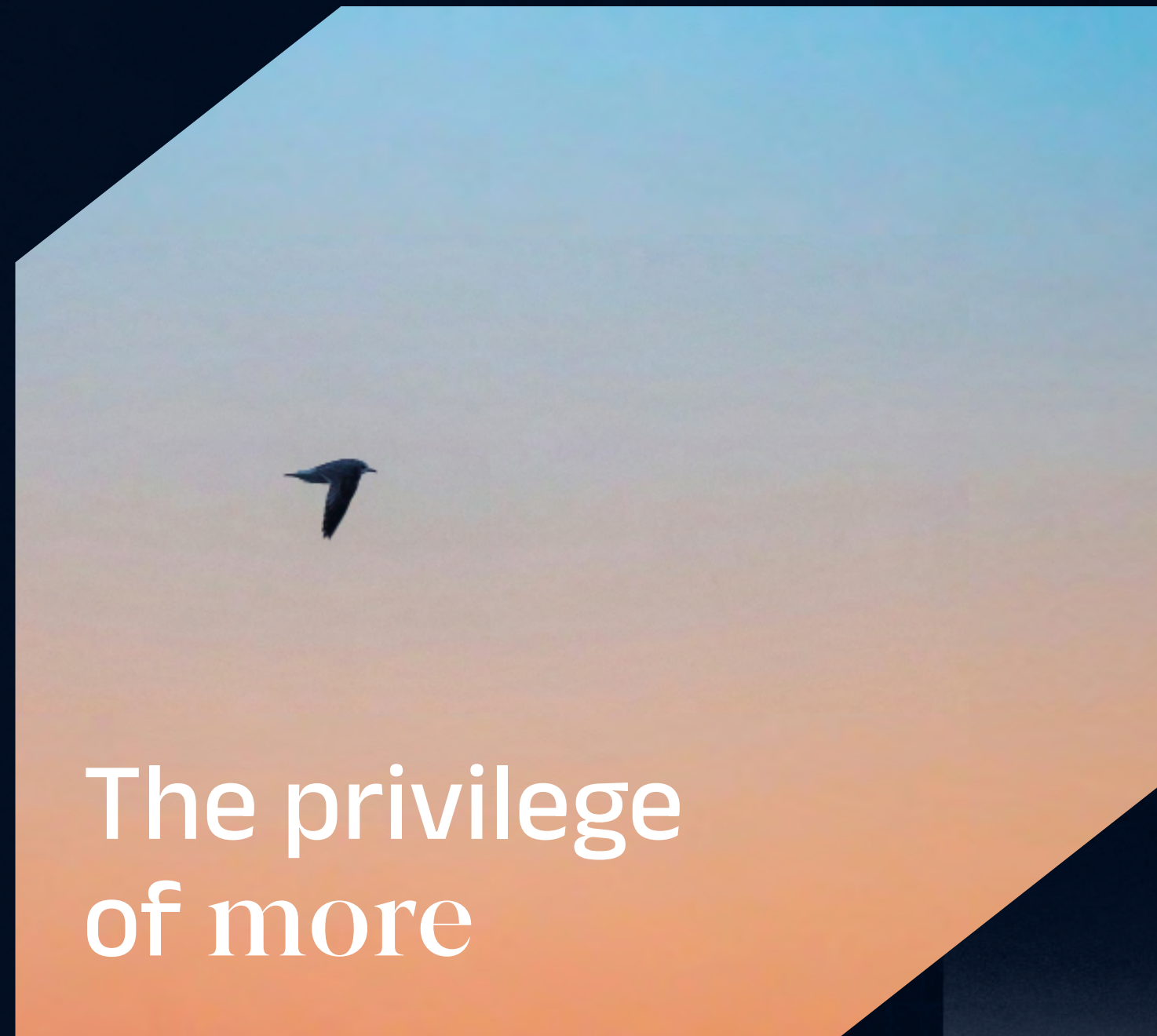


# TWENTY PLUS

COMMERCIAL / ADMINISTRATIVE / MEDICAL

One of MAINLANDS Projects  
DEVELOPMENT



The privilege  
of more

TWENTYPLUS

# Project Developer MAINLANDS

DEVELOPMENT

## Experience:

20+ years in real estate development.

## Focus Areas:

Residential compounds, medical hubs, administrative and commercial complexes.

## Mission:

Transforming the Egyptian real estate market by adding value to projects and creating new trends.

## Vision:

Become a global leader in urban development, fostering prosperity and simplifying lives through integrated communities.

## Chairman:

Mr.Tarek Abdullatif

# MAINLANDS Key Projects

DEVELOPMENT

## MOON YARD

A commercial and medical mall in Al-Shorouk City



Largest integrated healthcare district in Fifth Settlement



A commercial and business hub on North 90th Street



Cairo Capital Center is the epicenter of business in New Cairo for professionals



A full-service business hub in New Cairo



A 6-story administrative building on North 90th Street

## ARTEA

A prime mixed-use destination in El-Narges District with tailored units for every business need.

# TWENTYPLUS

## Overview

Twenty Plus is more than just a development; it's a vision realized. A vision of creating a thriving business hub in an established area, offering professionals a convenient location to work and explore new opportunities.

This mixed-use concept spans 5298 square meters, encompassing a dynamic blend of lifestyles, workspaces, leisure activities, and healthcare services, all within Twenty Plus.



# TWENTYPLUS



- 1 min away from North Teseen and Al-Sadat Axis.
- 5 mins from Business Plus and North Plus.
- Near El-Banafseg and Petrosport Club.
- 10 minutes away from El-Rehab and the Police Academy.

## Location

### A Prime Location, Unmatched Convenience

We strategically located Twenty Plus to combine the privilege of serenity and upscale of El-Yasmeen District in New Cairo while being surrounded by distinctive roads and landmarks for easy accessibility

# TWENTY PLUS

## Unit Types

SHOP SIGN

COMMERCIAL /

ADMINISTRATIVE /

MEDICAL

# TWENTYPLUS

## Commercial Units

The commercial units at Twenty Plus Mall are unique and sophisticated, offering something new to the Yasmin area, where nearby brands are limited. These stores create a comfortable and inviting shopping experience with sleek designs and wide-open facades.

Conveniently located within the mall, the units offer easy access to a diverse range of brands.

## Administrative Units

The administrative units at Twenty Plus Mall offer modern designs and prime locations, making them ideal for businesses to strengthen their presence in the growing Yasmin area.

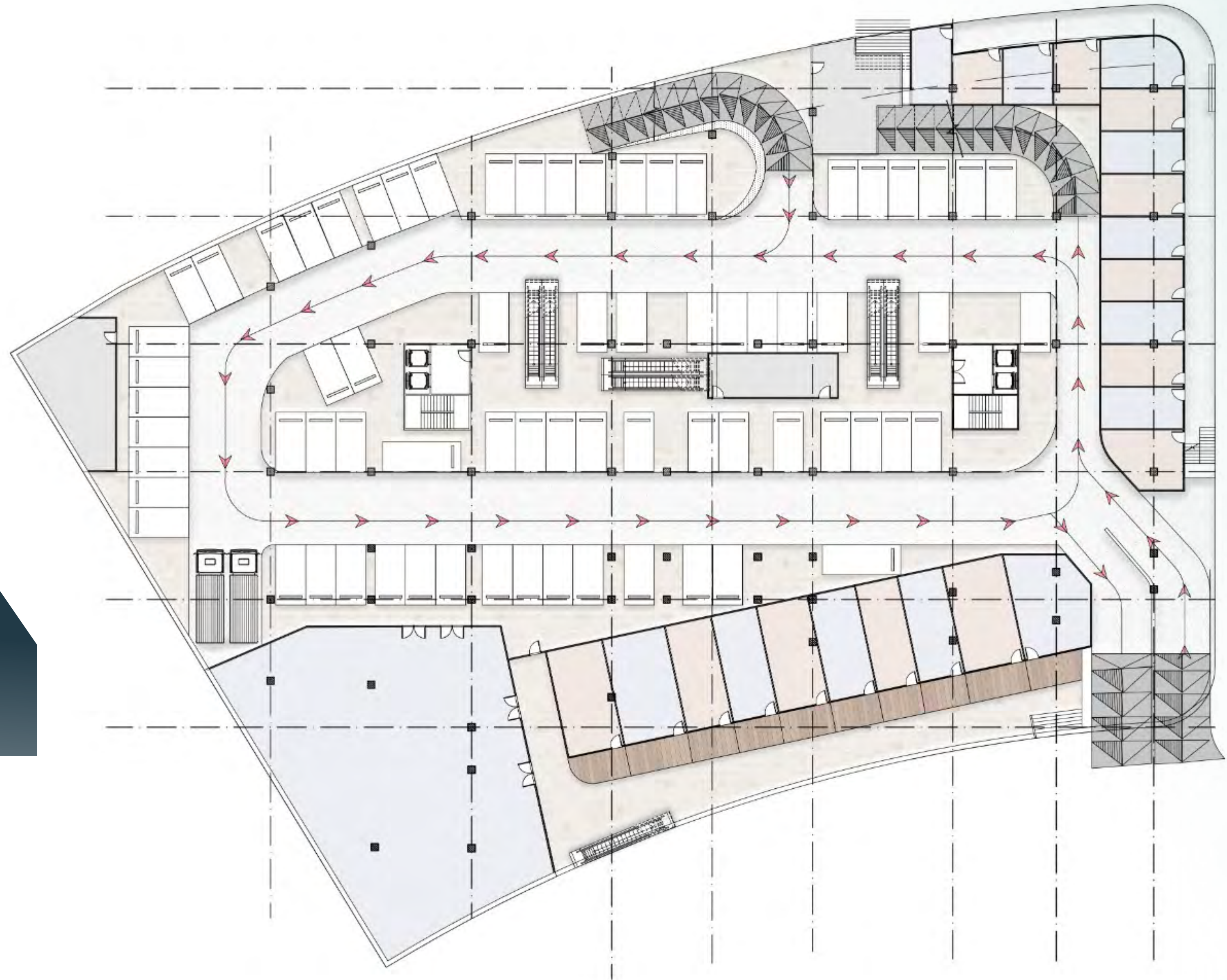
The strategic location ensures easy client access and increases opportunities to attract new business.

## Medical Units

The medical units at Twenty Plus Mall offer spacious layouts, exceptional designs, and prime locations near popular brands. These units provide a valuable opportunity to enhance your clinic's visibility, especially in the Yasmin area, where medical services are limited. This allows you to reach your target audience and attract new clientele to your brand.

# TWENTYPLUS

## Lower Ground Floor



## Ground Floor



# TWENTYPLUS

## First Floor



# TWENTYPLUS

## Second Floor



# TWENTYPLUS

## Third Floor



# TWENTYPLUS



Electronic Gates



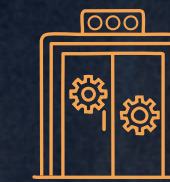
Maintenance of electromechanical utilities, heating, ventilation, and air-conditioning



Electricity maintenance during working hours



Exterior and interior lighting of public areas



Maintenance of elevators and generators



Housekeeping



External facade cleaning services



Firefighting and fire alarm maintenance for service area



Landscape, ramps, parking area, continuous maintenance

MAINLANDS  
DEVELOPMENT

TWENTYPLUS

     @mainlandsdevelopment | 15947



LOCATION