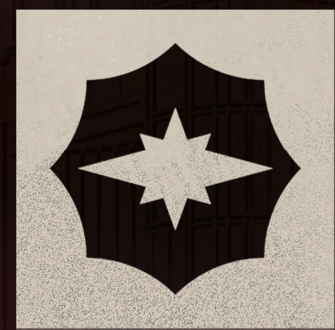


elāmat  
town



**THE MARK**  
OF DISTINCTION





**ORIA**

DEVELOPMENTS

YOUR NEXT

*Chapter.*

# ACCESSIBLE LOCATION

ξlāmat  
town

ξlāmat Town is located in a prime destination that provides excellent accessibility

# Elāmat town

## 6th of October City مدينة ٦ أكتوبر



# MALLS

- 10** Minutes to Mall of Arabia
- 15** Minutes to Arkan Plaza
- 15** Minutes to Mall of Egypt
- 20** Minutes to Dandy Mega Mall

# EDUCATION

- 5** Minutes to October 6th University.
- 9** Minutes to Must University
- 10** Minutes to Nile Egyptian School (NES).
- 10** Minutes to MSA University

# CLUBS

- 8** Minutes to 6th Of October Club
- 10** Minutes to Wadi Degla Club 1
- 9** Minutes to Wadi Degla Club 2
- 10** Minutes to Egyptian Shooting Club

# HEALTHCARE

- 2** Minutes to Cleopatra Hospital
- 6** Minutes to October 6th Hospital
- 13** Minutes to Dar Al-Fouad
- 20** Minutes to Rofayda Health Park.

# FACILITIES & FEATURES



Smart solution systems by WE



FITNESS & WELLNESS



14Elevators by Schindler, including 4 panoramic elevators



8Escalators By Schindler



2Basement smart parking with a capacity of 1,200 cars, including EV charging stations



Ultra-modern façade featuring curtain wall double-laminated glass with high sound and thermal insulation, in addition to a louver system



Solar energy system



2Mega LED advertising screens



Triple play services by WE



Free Wi-fi



Infinity Pool



Rooftop Restaurant



Handicapped rail way's



ATM Center



Interactive Screens



Elamat  
TOWER

HOTEL

Elamat  
TOWER

Elamat

Elamat

HOTEL ENTRANCE





elāmat  
COVA

elāmat  
COVA

elāmat  
COVA

SHOP SHOP SHOP SHOP

SHOP SHOP

SHOP SHOP SHOP



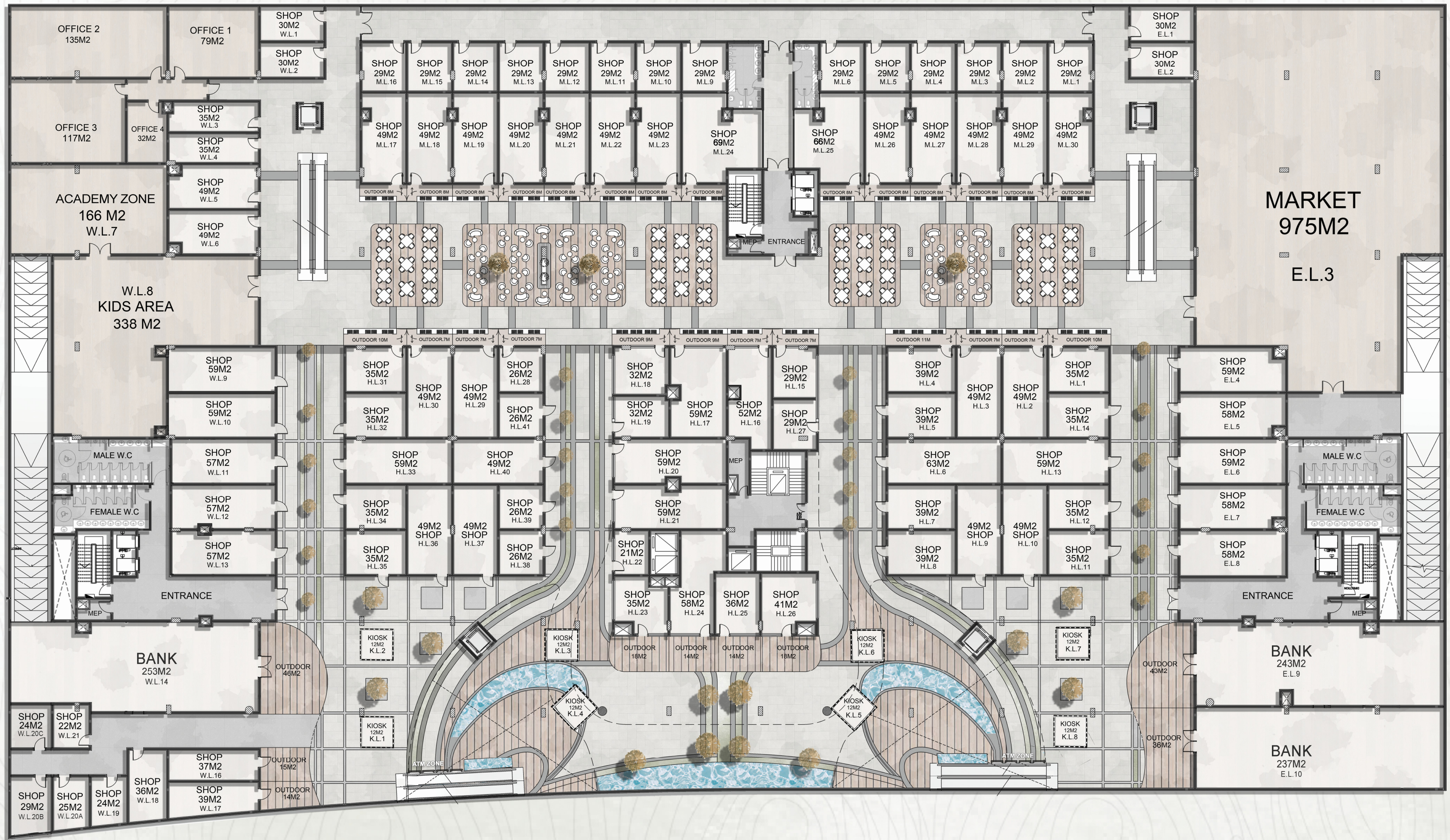


# El Amout town

**COMMERCIAL  
FLOORS** ( LOWER GROUND - 1TH )

Ξlāmat  
town

Ξlāmat Town is located in a prime destination that provides excellent accessibility



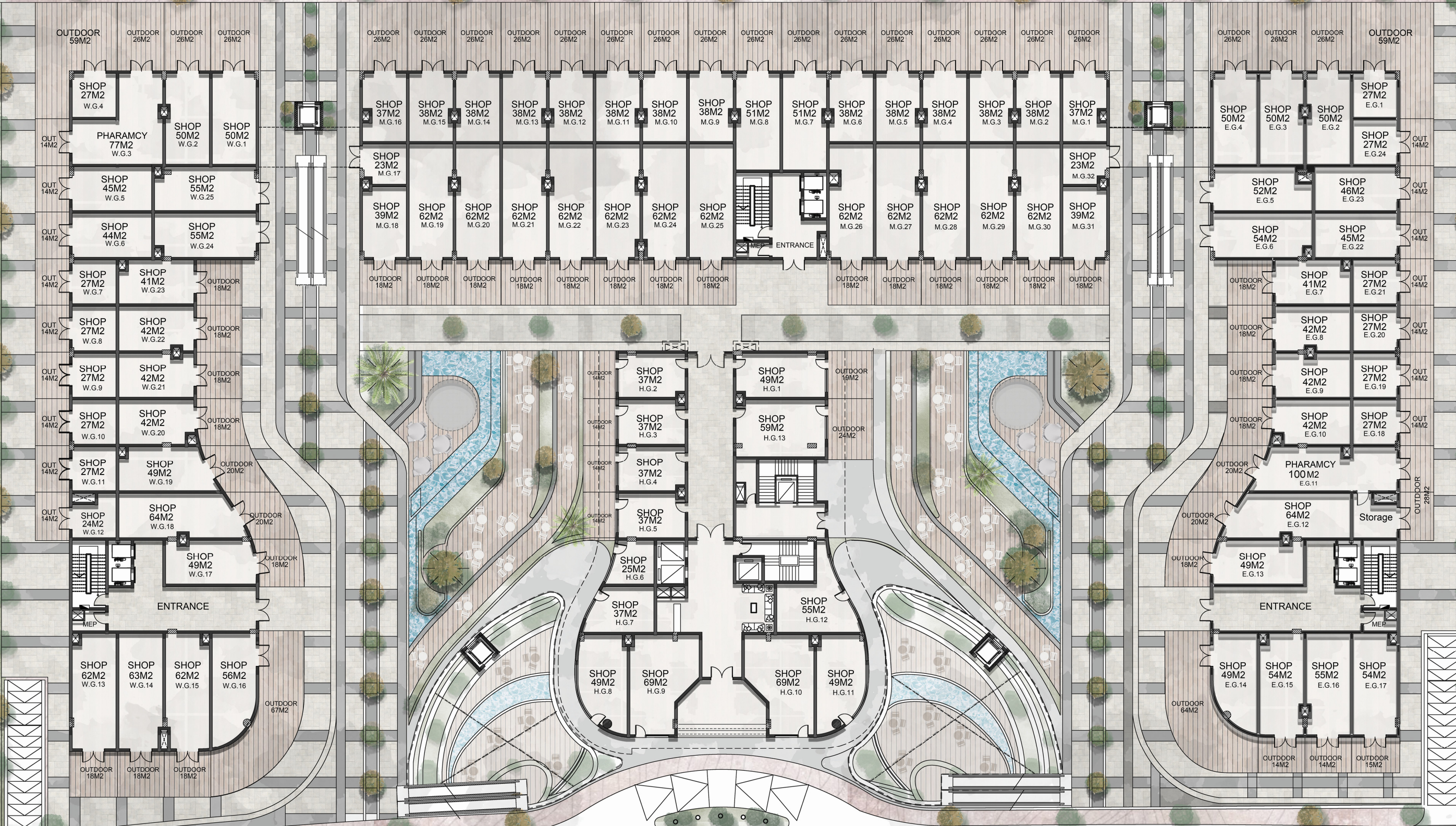
# LOWER GROUND FLOOR PLAN

BACK ROAD

NEIGHBOR

NEIGHBOR

MAIN ROAD



OUTDOOR 59M2

OUTDOOR 26M2

OUTDOOR 26M2

OUTDOOR 26M2

OUTDOOR 26M2

OUTDOOR 26M2

OUTDOOR 26M2

OUTDOOR 26M2

OUTDOOR 26M2

OUTDOOR 26M2

OUTDOOR 26M2

OUTDOOR 26M2

OUTDOOR 26M2

OUTDOOR 26M2

OUTDOOR 26M2

OUTDOOR 26M2

OUTDOOR 26M2

OUTDOOR 26M2

OUTDOOR 26M2

OUTDOOR 26M2

OUTDOOR 26M2

OUTDOOR 26M2

OUTDOOR 26M2

OUTDOOR 26M2

OUTDOOR 59M2

SHOP 27M2  
W.G.4

PHARAMCY 77M2  
W.G.3

SHOP 50M2  
W.G.2

SHOP 50M2  
W.G.1

SHOP 45M2  
W.G.5

SHOP 55M2  
W.G.25

SHOP 44M2  
W.G.6

SHOP 55M2  
W.G.24

SHOP 27M2  
W.G.7

SHOP 41M2  
W.G.23

OUTDOOR 18M2

SHOP 27M2  
W.G.8

SHOP 42M2  
W.G.22

OUTDOOR 18M2

SHOP 27M2  
W.G.9

SHOP 42M2  
W.G.21

OUTDOOR 18M2

SHOP 27M2  
W.G.10

SHOP 42M2  
W.G.20

OUTDOOR 18M2

SHOP 27M2  
W.G.11

SHOP 49M2  
W.G.19

OUTDOOR 20M2

SHOP 24M2  
W.G.12

SHOP 64M2  
W.G.18

OUTDOOR 20M2

SHOP 49M2  
W.G.17

OUTDOOR 18M2

SHOP 62M2  
W.G.13

SHOP 63M2  
W.G.14

SHOP 62M2  
W.G.15

SHOP 56M2  
W.G.16

OUTDOOR 67M2

OUTDOOR 18M2

OUTDOOR 18M2

OUTDOOR 18M2

SHOP 37M2  
M.G.16

SHOP 38M2  
M.G.15

SHOP 38M2  
M.G.14

SHOP 38M2  
M.G.13

SHOP 38M2  
M.G.12

SHOP 38M2  
M.G.11

SHOP 38M2  
M.G.10

SHOP 38M2  
M.G.9

SHOP 51M2  
M.G.8

SHOP 51M2  
M.G.7

SHOP 38M2  
M.G.6

SHOP 38M2  
M.G.5

SHOP 38M2  
M.G.4

SHOP 38M2  
M.G.3

SHOP 38M2  
M.G.2

SHOP 37M2  
M.G.1

SHOP 23M2  
M.G.17

SHOP 39M2  
M.G.18

SHOP 62M2  
M.G.19

SHOP 62M2  
M.G.20

SHOP 62M2  
M.G.21

SHOP 62M2  
M.G.22

SHOP 62M2  
M.G.23

SHOP 62M2  
M.G.24

SHOP 62M2  
M.G.25

SHOP 62M2  
M.G.26

SHOP 62M2  
M.G.27

SHOP 62M2  
M.G.28

SHOP 62M2  
M.G.29

SHOP 62M2  
M.G.30

SHOP 62M2  
M.G.31

SHOP 23M2  
M.G.32

OUTDOOR 18M2

OUTDOOR 18M2

OUTDOOR 18M2

OUTDOOR 18M2

OUTDOOR 18M2

OUTDOOR 18M2

OUTDOOR 18M2

OUTDOOR 18M2

ENTRANCE

OUTDOOR 18M2

OUTDOOR 18M2

OUTDOOR 18M2

OUTDOOR 18M2

OUTDOOR 18M2

OUTDOOR 18M2

OUTDOOR 18M2

OUTDOOR 18M2

OUTDOOR 18M2

OUTDOOR 18M2

OUTDOOR 18M2

OUTDOOR 18M2

SHOP 50M2  
E.G.4

SHOP 50M2  
E.G.3

SHOP 50M2  
E.G.2

SHOP 27M2  
E.G.1

SHOP 52M2  
E.G.5

SHOP 46M2  
E.G.23

SHOP 45M2  
E.G.22

SHOP 27M2  
E.G.24

SHOP 54M2  
E.G.6

SHOP 41M2  
E.G.7

SHOP 27M2  
E.G.21

OUTDOOR 18M2

OUTDOOR 18M2

OUTDOOR 18M2

OUTDOOR 18M2

OUTDOOR 18M2

SHOP 42M2  
E.G.8

SHOP 27M2  
E.G.20

OUTDOOR 18M2

SHOP 42M2  
E.G.9

SHOP 27M2  
E.G.19

OUTDOOR 18M2

SHOP 42M2  
E.G.10

SHOP 27M2  
E.G.18

OUTDOOR 18M2

PHARAMCY 100M2  
E.G.11

SHOP 64M2  
E.G.12

Storage

OUTDOOR 20M2

SHOP 49M2  
E.G.13

OUTDOOR 18M2

ENTRANCE

SHOP 49M2  
E.G.14

SHOP 54M2  
E.G.15

SHOP 55M2  
E.G.16

SHOP 54M2  
E.G.17

OUTDOOR 64M2

OUTDOOR 14M2

OUTDOOR 14M2

OUTDOOR 15M2

OUTDOOR 18M2

OUTDOOR 20M2

OUTDOOR 20M2

OUTDOOR 28M2

OUTDOOR 18M2

OUTDOOR 18M2

OUTDOOR 18M2

OUTDOOR 18M2

OUTDOOR 18M2

OUTDOOR 18M2

OUTDOOR 18M2

OUTDOOR 18M2

OUTDOOR 18M2

OUTDOOR 18M2

OUTDOOR 18M2

OUTDOOR 18M2

OUTDOOR 18M2

OUTDOOR 18M2

OUTDOOR 18M2

OUTDOOR 18M2

OUTDOOR 18M2

OUTDOOR 18M2

OUTDOOR 18M2

OUTDOOR 18M2

OUTDOOR 18M2

OUTDOOR 18M2

OUTDOOR 18M2

OUTDOOR 18M2

OUTDOOR 18M2

OUTDOOR 18M2

OUTDOOR 18M2

OUTDOOR 18M2

OUTDOOR 18M2

OUTDOOR 18M2

OUTDOOR 18M2

OUTDOOR 18M2

OUTDOOR 18M2

OUTDOOR 18M2

OUTDOOR 18M2

OUTDOOR 18M2

OUTDOOR 18M2

OUTDOOR 18M2

OUTDOOR 18M2

OUTDOOR 18M2

OUTDOOR 18M2

OUTDOOR 18M2

OUTDOOR 18M2

OUTDOOR 18M2

OUTDOOR 18M2

OUTDOOR 18M2

OUTDOOR 18M2

OUTDOOR 18M2

OUTDOOR 18M2

OUTDOOR 18M2

OUTDOOR 18M2

OUTDOOR 18M2

OUTDOOR 18M2

OUTDOOR 18M2

OUTDOOR 18M2

OUTDOOR 18M2

OUTDOOR 18M2

OUTDOOR 18M2

OUTDOOR 18M2

OUTDOOR 18M2

OUTDOOR 18M2

OUTDOOR 18M2

OUTDOOR 18M2

OUTDOOR 18M2

OUTDOOR 18M2

OUTDOOR 18M2

OUTDOOR 18M2

OUTDOOR 18M2

OUTDOOR 18M2

OUTDOOR 18M2

OUTDOOR 18M2

OUTDOOR 18M2

OUTDOOR 18M2

OUTDOOR 18M2

OUTDOOR 18M2

OUTDOOR 18M2

OUTDOOR 18M2

OUTDOOR 18M2

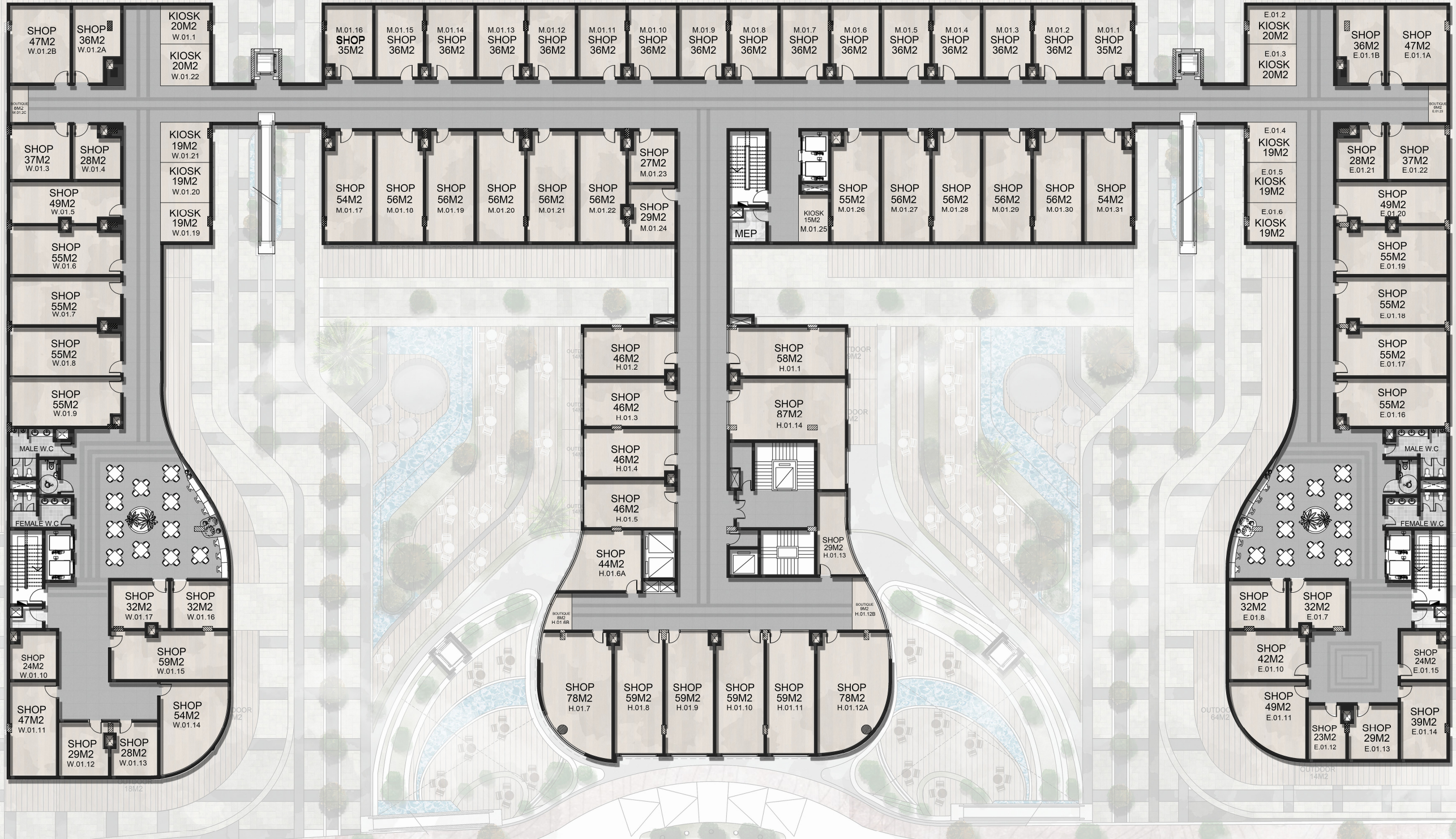
OUTDOOR 18M2

OUTDOOR 18M2

BACK ROAD

NEIGHBOR

NEIGHBOR



FIRST FLOOR PLAN  
MAIN ROAD

**ADMIN & MEDICAL  
FLOORS ( 2TH - 5TH )**

Ξlāmat  
town

Ξlāmat Town is located in a prime destination that provides excellent accessibility

# INTERIOR DESIGN

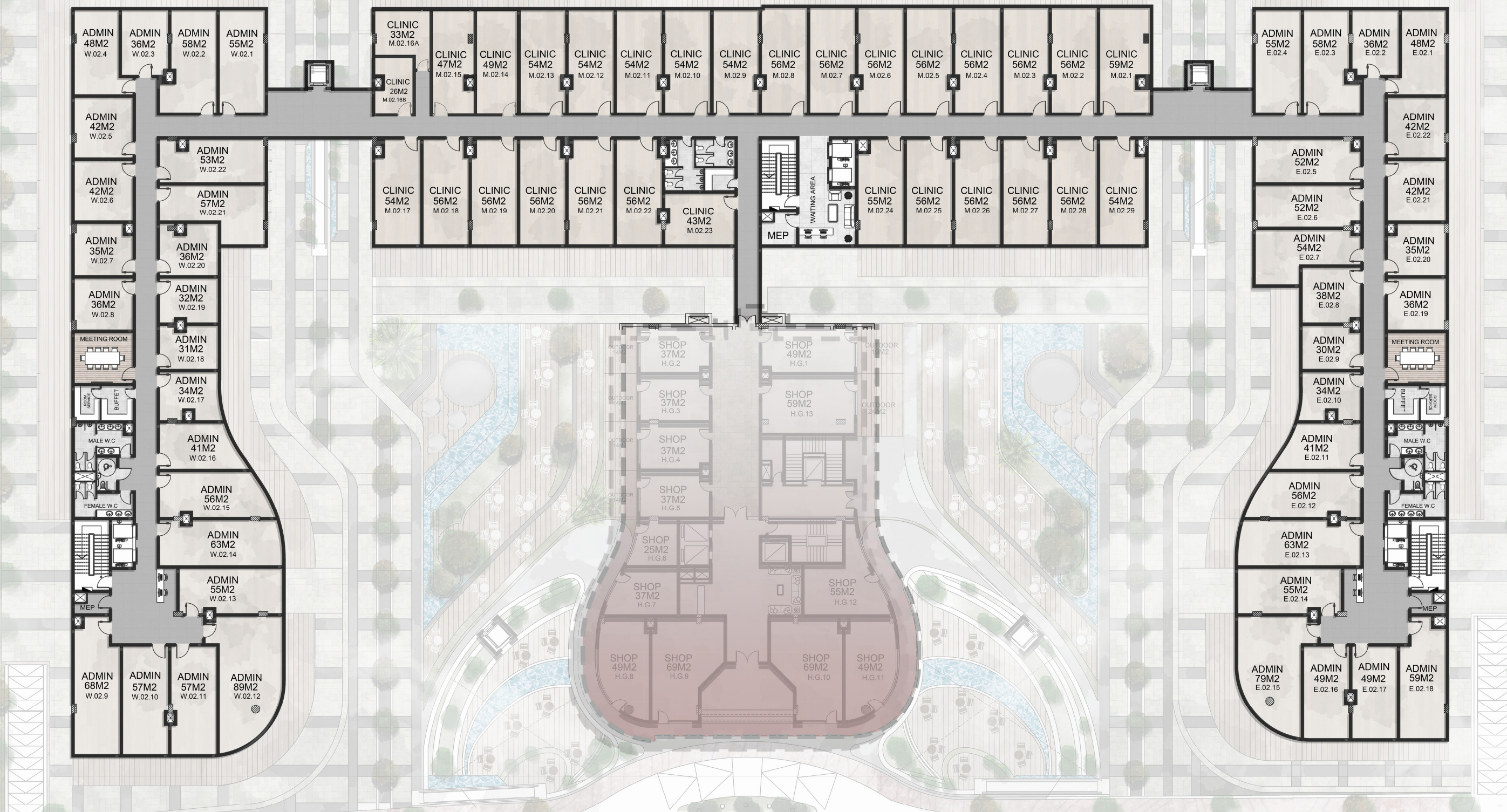


YOUR NEXT  
*Chapter*

BACK ROAD

NEIGHBOR

NEIGHBOR



# SECOND FLOOR PLAN

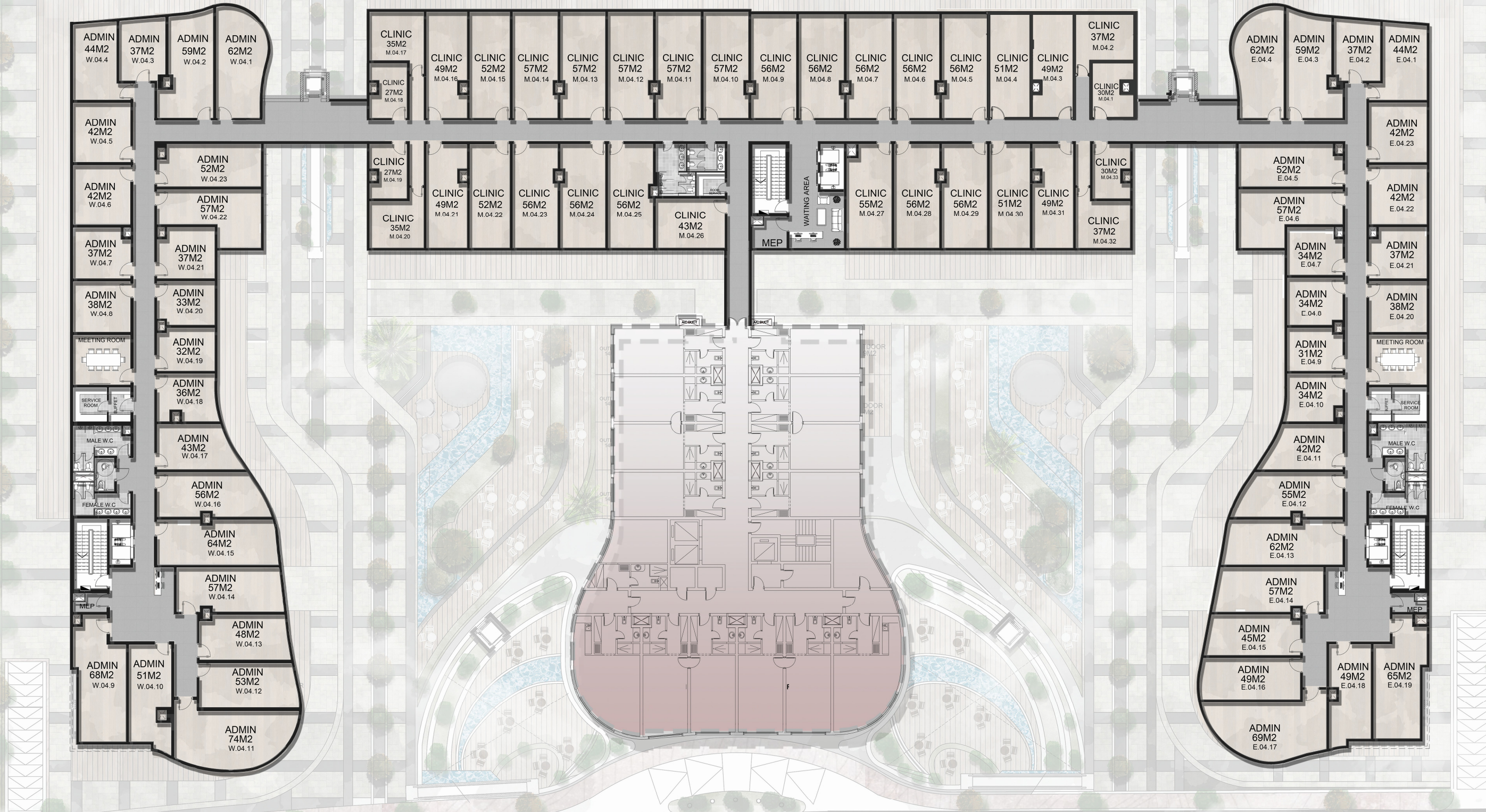
MAIN ROAD



BACK ROAD

NEIGHBOR

NEIGHBOR

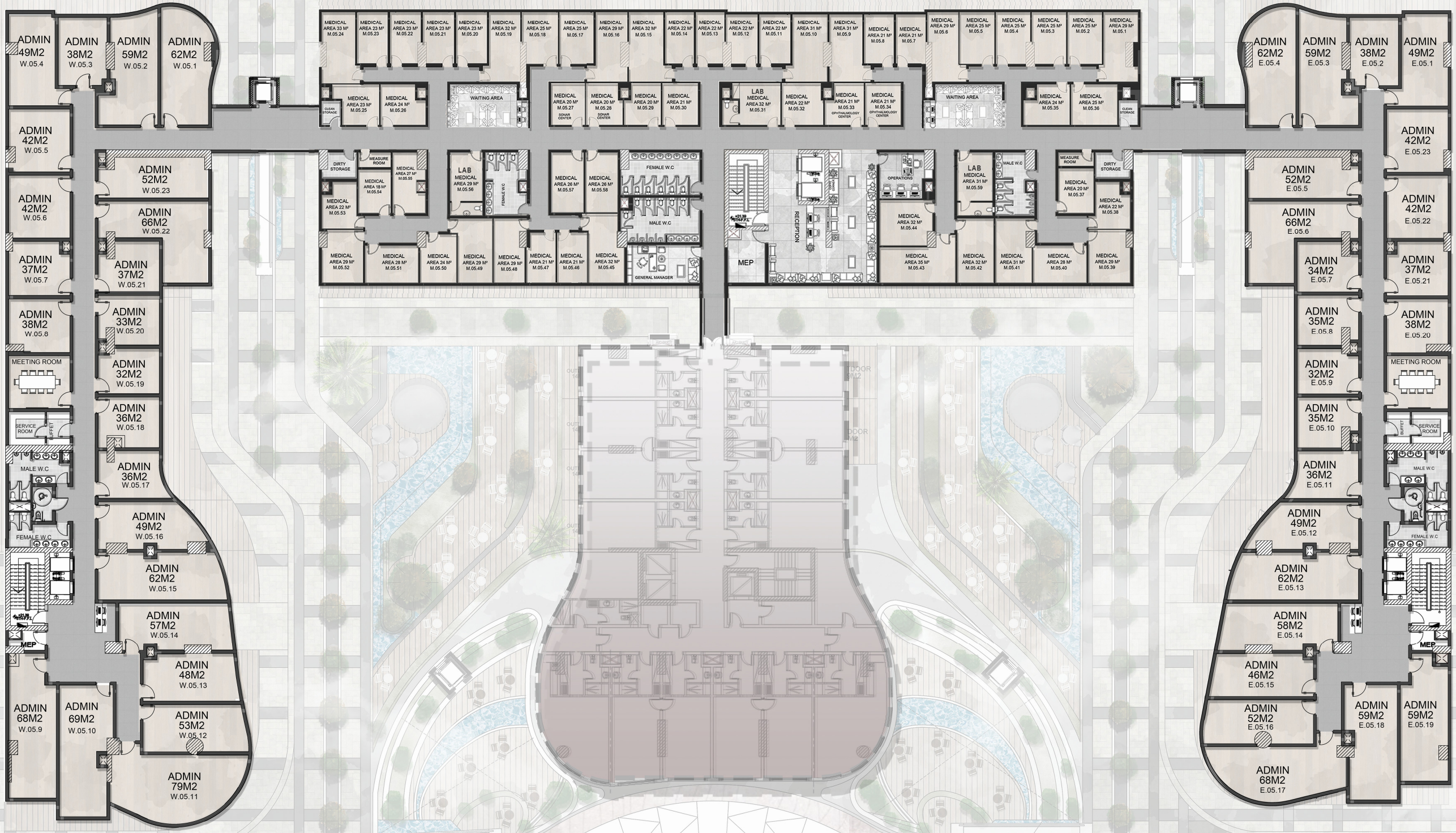


FOURTH FLOOR PLAN  
MAIN ROAD

BACK ROAD

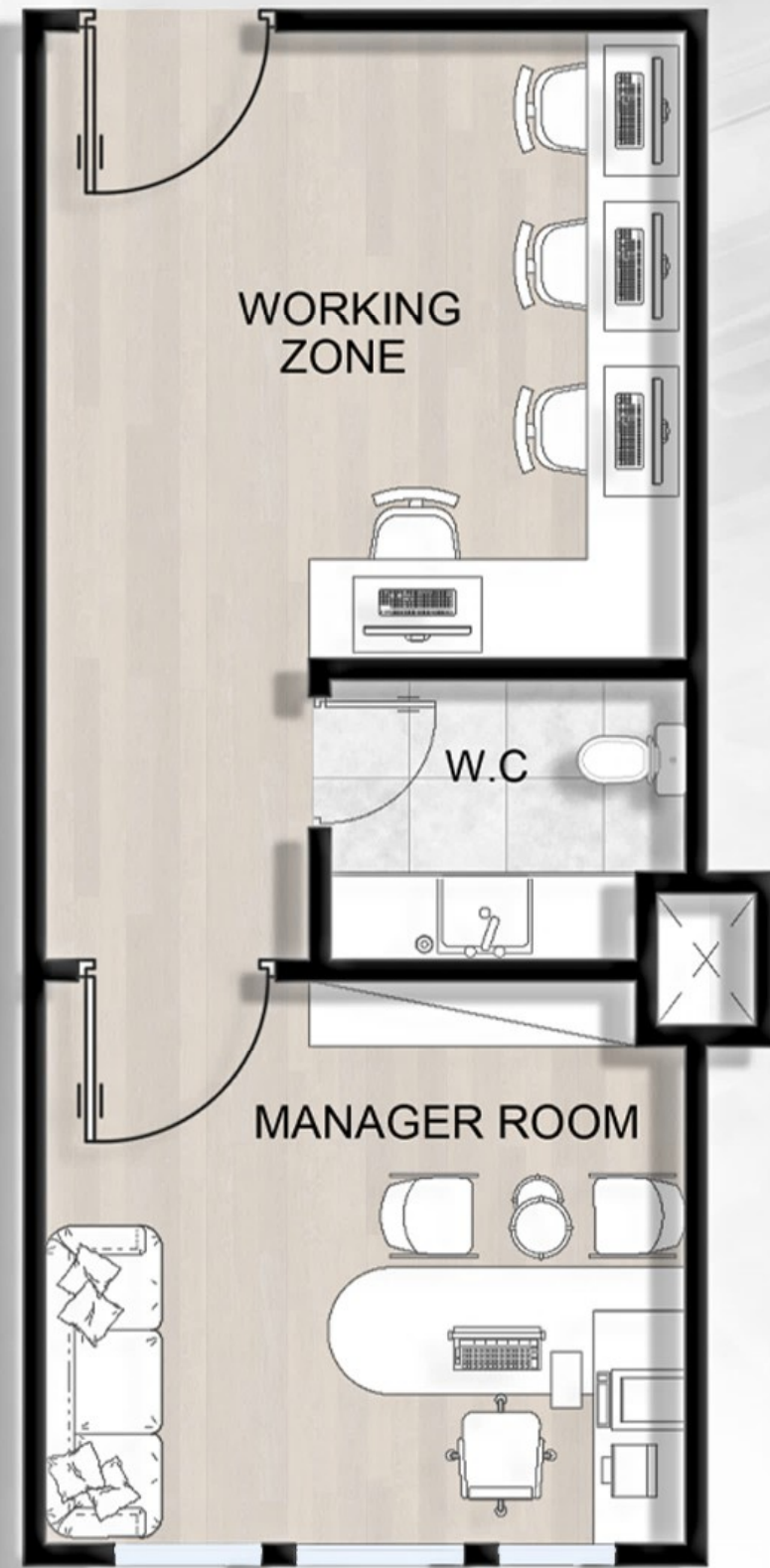
NEIGHBOR

NEIGHBOR

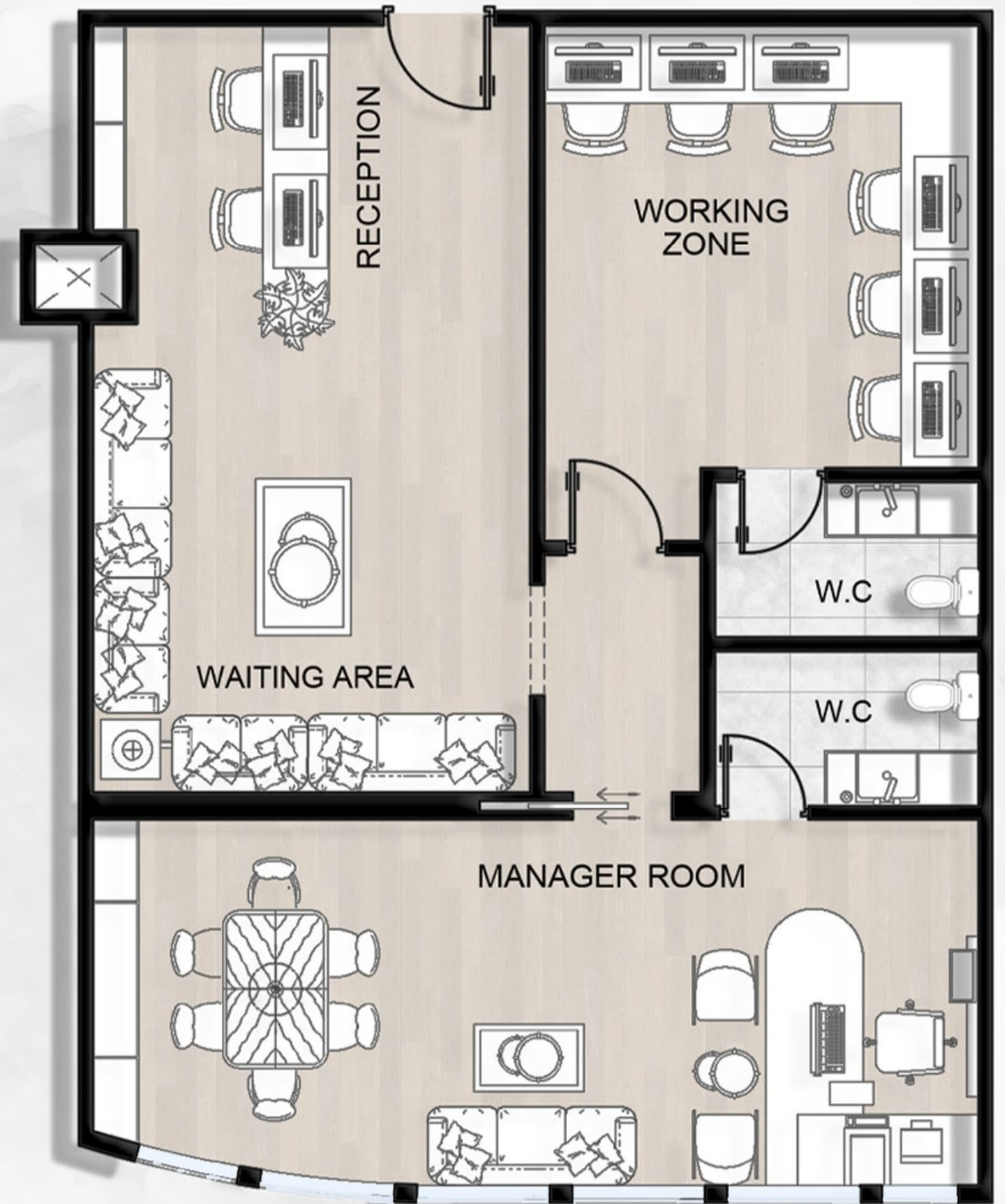


# FIFTH FLOOR PLAN

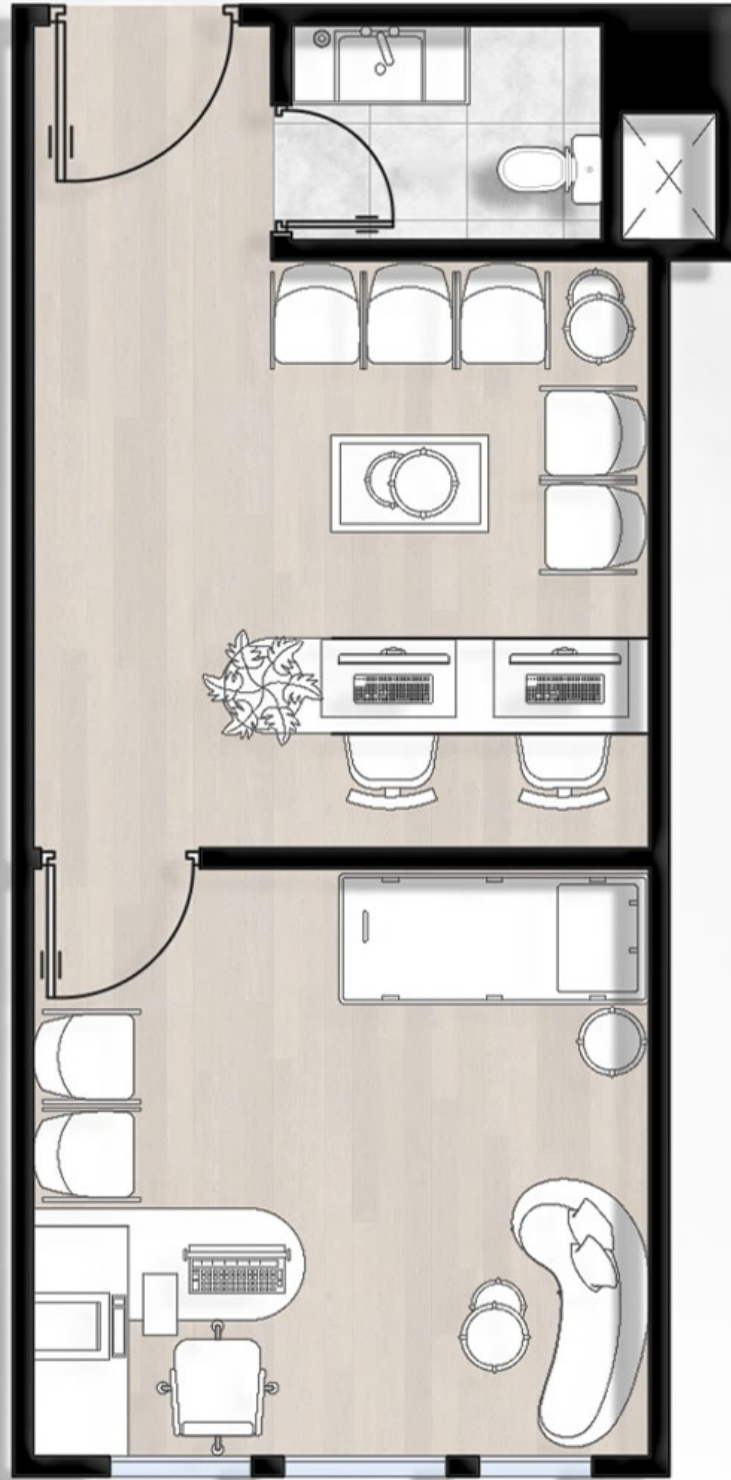
MAIN ROAD



**SINGLE ADMIN UNIT**  
49 M2



**DOUBLE ADMIN UNIT**  
98 M2



**SINGLE MEDICAL UNIT**  
54 M2



**L-SHAPE MEDICAL UNIT**  
81 M2

**SERVICE APARTMENT**  
**FLOORS (6TH - 9TH)**

Ξlāmat  
town

Ξlāmat Town is located in a prime destination that provides excellent accessibility

# INTERIOR DESIGN



OPERATED BY

SWISS INN

HOTELS & RESORTS

YOUR NEXT  
*Chapter*

BACK ROAD

NEIGHBOR

NEIGHBOR

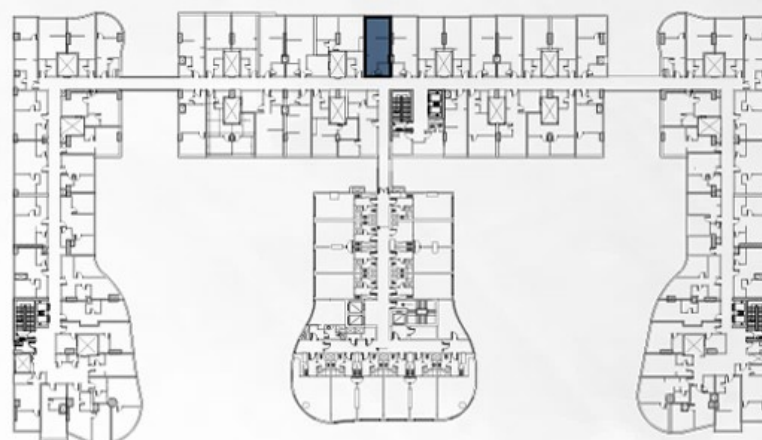


SIXTH FLOOR PLAN  
MAIN ROAD



**TWO ROOMS APT-1A**  
*(BED-LIVING & DINING)*  
**52 M2**

KEYPLAN

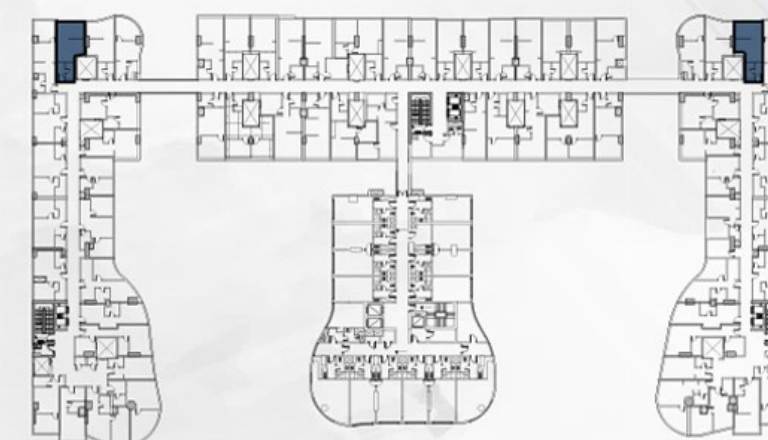


**6TH FLOOR PLAN.**  
M.06.1

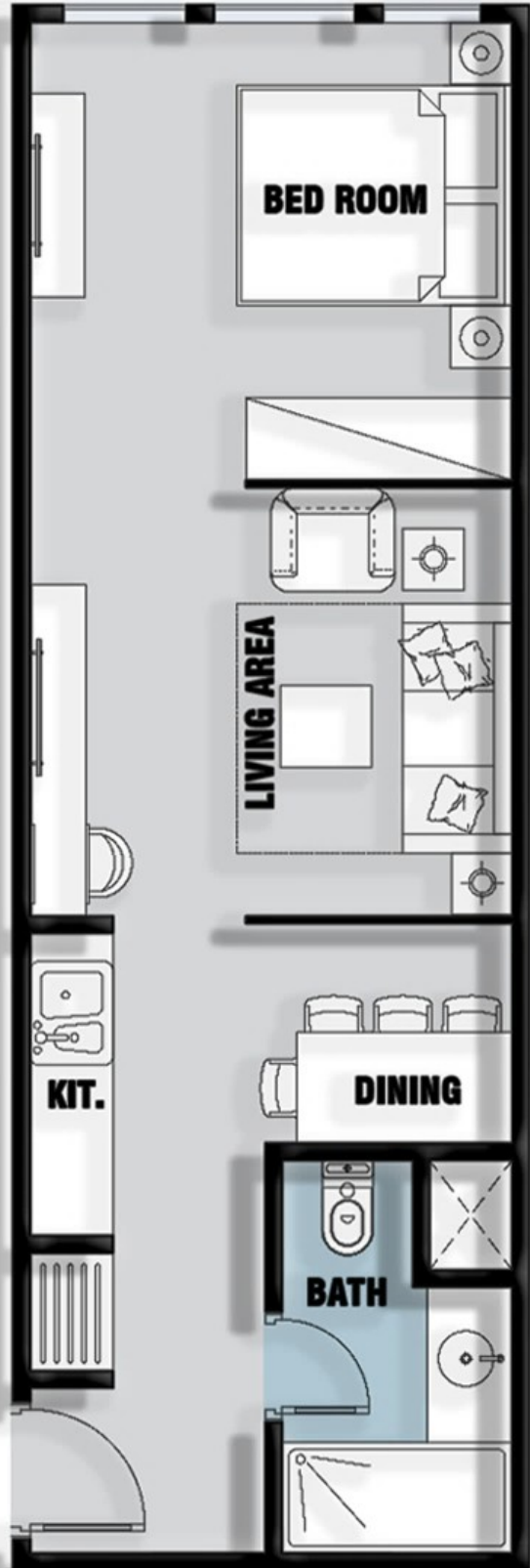


**TWO ROOMS APT-2B**  
*(BED-LIVING & DINING)*  
**49 M2**

KEYPLAN

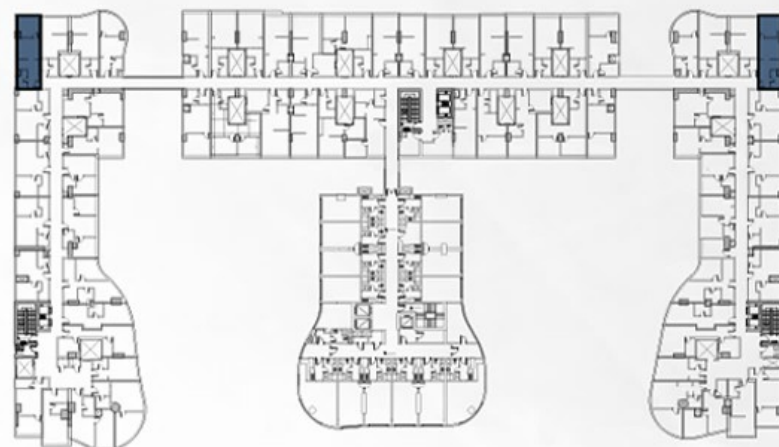


**6TH FLOOR PLAN.**  
E.06.2



**TWO ROOMS APT-1E**  
*(BED-LIVING & DINING)*  
**58 M2**

KEYPLAN

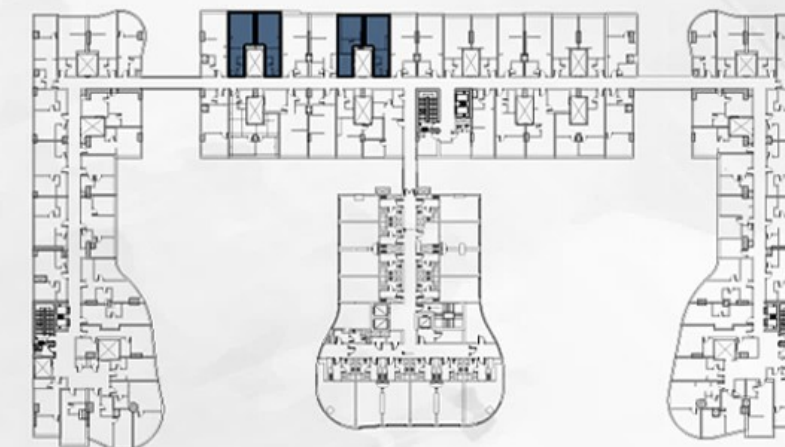


**6TH FLOOR PLAN.**  
E.06.1



**TWO ROOMS APT-2F**  
*(BED-LIVING & DINING)*  
**47 M2**

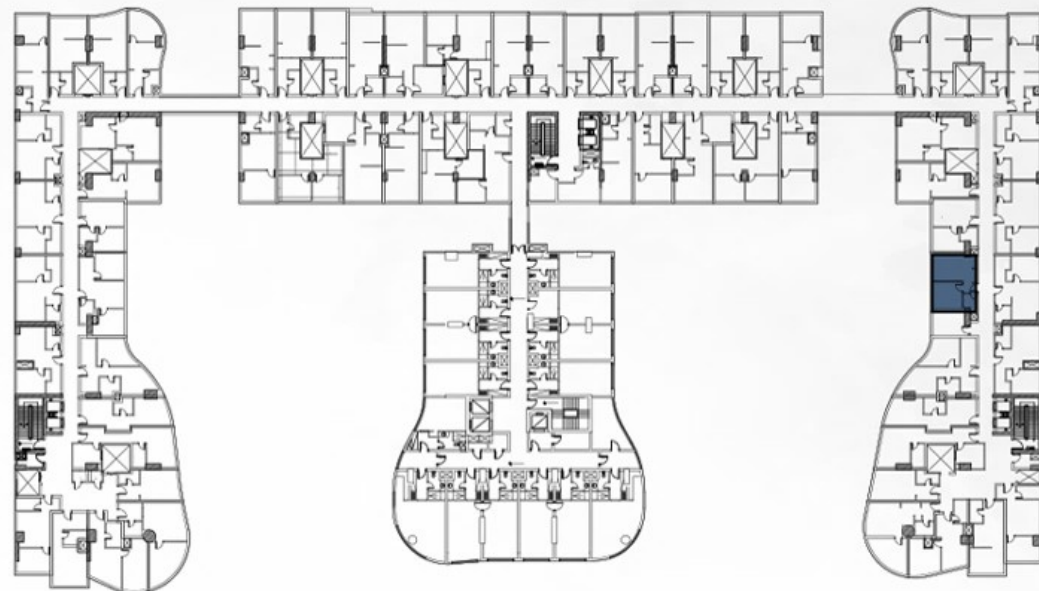
KEYPLAN



**6TH FLOOR PLAN.**  
M.06.2

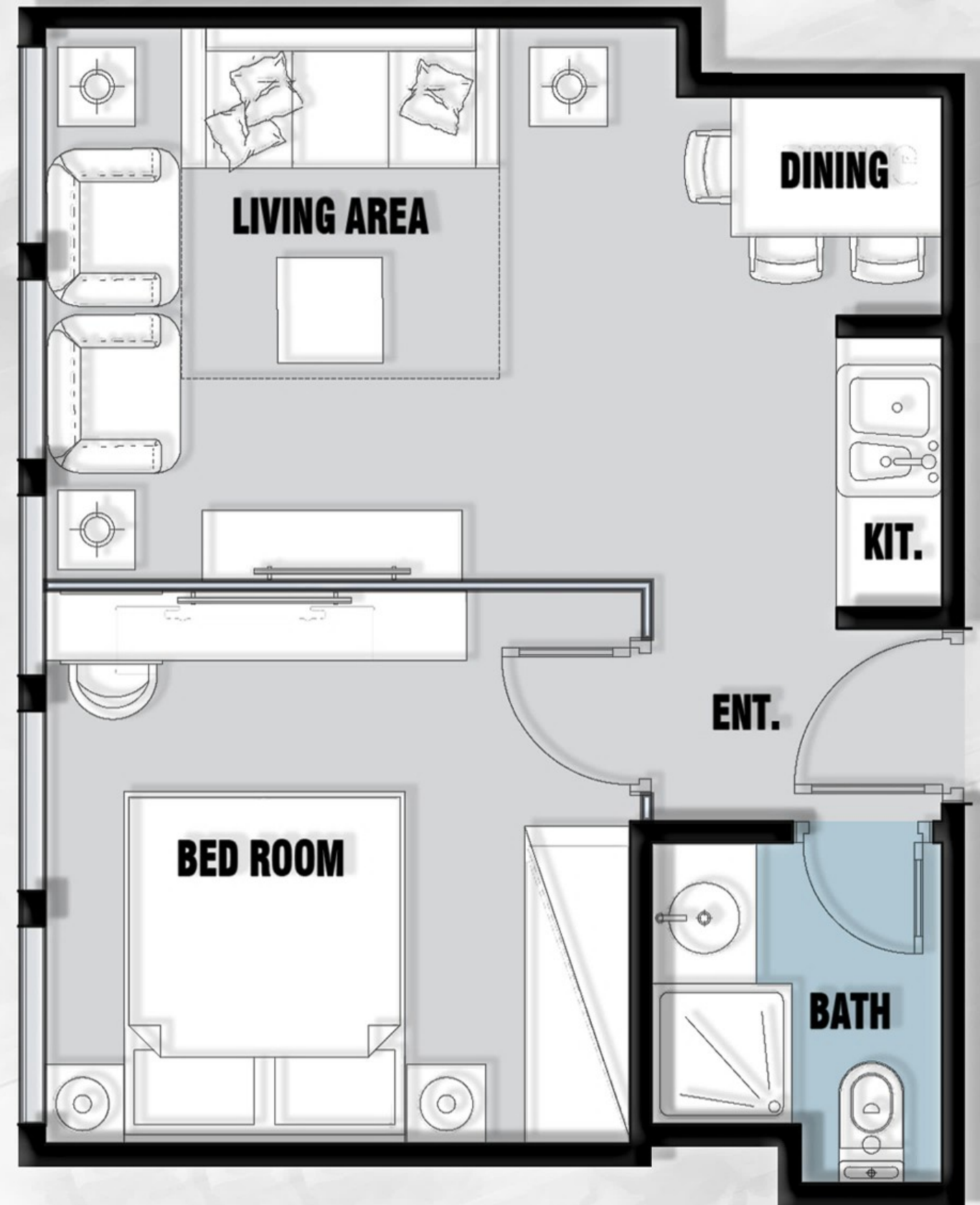
## TWO ROOMS APT-2E (BED-LIVING & DINING) 49 M2

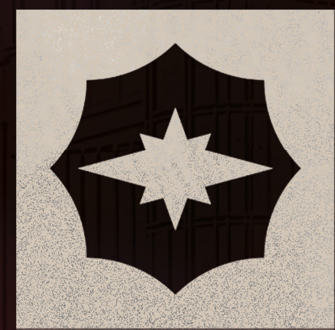
KEYPLAN



6TH FLOOR PLAN.

E.06.8





**ORIA**

DEVELOPMENTS

YOUR NEXT

*Chapter.*