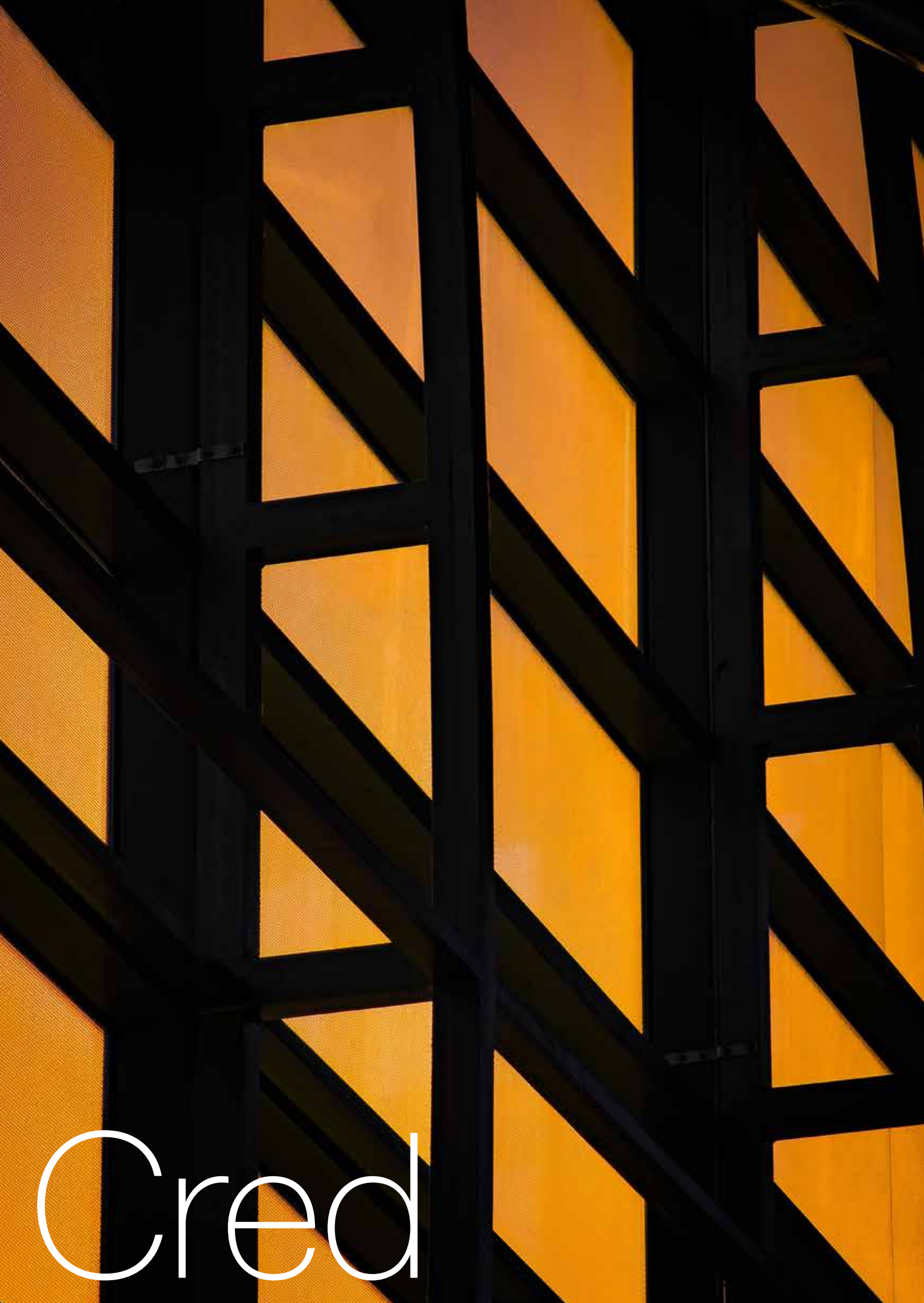




ever.

Residential



Cred

The Developer

At Cred, credibility is our number one priority when it comes to introducing world-class communities of utmost value. The company was launched with a progressive philosophy that mirrors the aspirations of modern lifestyles to set a benchmark in integrated living.

Cred's journey relies on modern designs and timely delivering of remarkable projects across Cairo that blend the best in living, leisure, business and entertainment under one comprehensive roof to redefine the true meaning of life inside out.



Ever

The Project

Imaginatively designed by the leading Hany Saad Innovations, Ever is a timeless experience in the heart of West of Cairo, redefining modern integration at every doorstep. A mixed-use vision of ever-evolving possibilities, combining fully-finished residential units with sleek commercial and medical spaces where bespoke design truly speaks volumes.

With a one of a kind location closer than ever, the signature destination boasts a front-row seat on 26th of July Corridor to surround residents with October's lively happenings while bringing them closer to unmatched privacy, as well as an unrivaled array of retail luxuries and select dining concepts without having to leave their gated community.

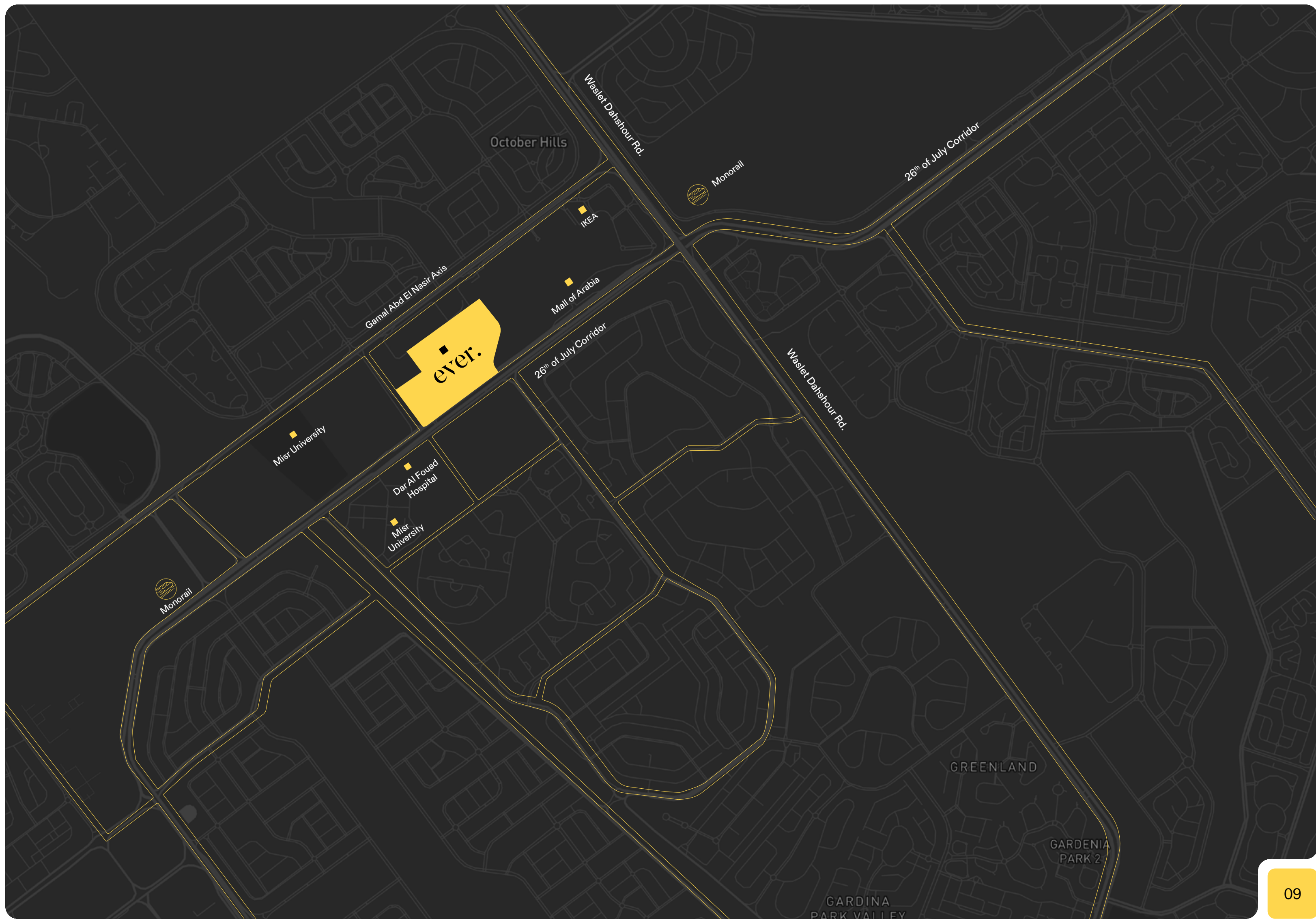


Closer than ever.

Masterplanned with ultimate convenience in mind, Ever is ideally located in the heart of Sheikh Zayed, directly on 26th of July Corridor, neighboring Mall of Arabia and Misr University of Science and Technology.

The project crowns a prime spot in 6th of October while offering seamless access to all vital highways and main roads in Cairo.

Location



ever.

Misr University

Dar Al Fouad Hospital

Misr University

Mall of Arabia

IKEA

October Hills

Gamal Abd El Nasir Axis

26th of July Corridor

Waslet Danshour Rd.

Monorail

26th of July Corridor

Waslet Danshour Rd.

Monorail

GREENLAND

GARDENIA PARK 2

GARDINA PARK VALLEY



Ever introduces an innovative mixed-use vision on 40 acres of lush land. The project combines a signature collection of unit types with select commercial experiences at every door step. Ever is a timeless community where intricate luxury exists in absolute harmony with serene nature.

Masterplan

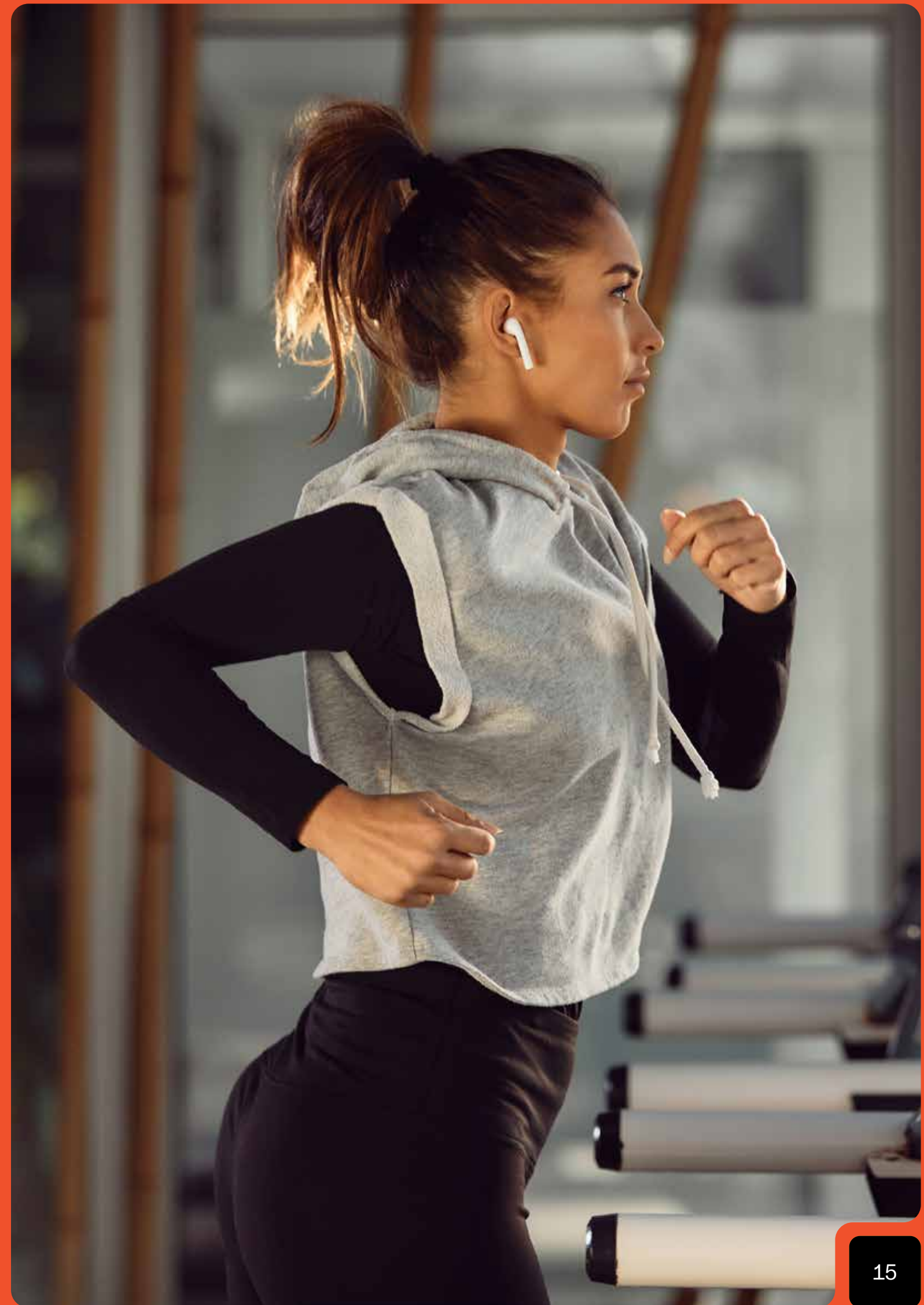
Crisp and contemporary in design, Ever's first phase boasts a mix of sleek and minimalist low-rise residential units (G+5), in addition to (G+9) administrative offices and clinics, directly facing the central monorail station.

Phase two will embrace contemporary high-rise buildings (G+11).

Disclaimer All renders, floorplans & specifications are conceptual only and subject to change. All dimensions are approximate and may vary with actual construction. Items of finishing, furniture & decorations are conceptual only and are not necessarily included in the unit.



Amenities



Lush Greenery and Gorgeous Water Features.



Security Gated Access.
Luxurious Entrance Spine.
Double-loaded Building.

Outdoor & Indoor Gym.



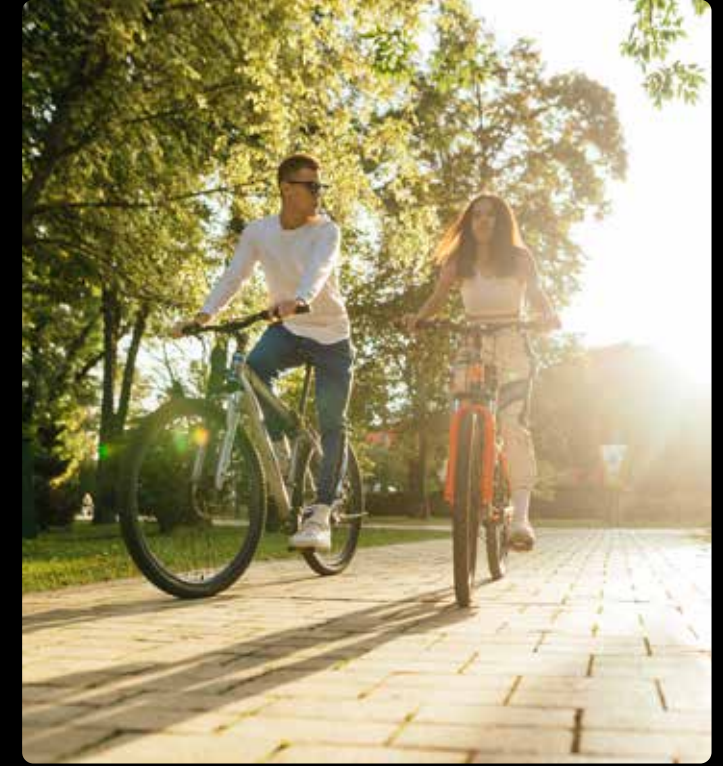
Outdoor & Underground Parking.



Garbage Chutes.

Fully-Finished Clinics with Air Condition.

BUA on 16.5% of the Total Land Area.



Leisure Clubhouse.



Clubhouse



Disclaimer All renders, floorplans & specifications are conceptual only and subject to change. All dimensions are approximate and may vary with actual construction. Items of finishing, furniture & decorations are conceptual only and are not necessarily included in the unit.





Residential

The mixed-use development is artfully planned on 40 acres of lush land to introduce a variety of upscale housing types and commercial experiences that promise to last a lifetime. Crisp and contemporary in design, Ever is an immersive living experience that fosters community connection, deep enjoyment and work-life balance.

The destination boasts an ideal location in the heart of October while enveloping worlds within; from residential distinction, commercial excellence and inspirational administrative spaces, Ever promises something for every lifestyle to thrive.

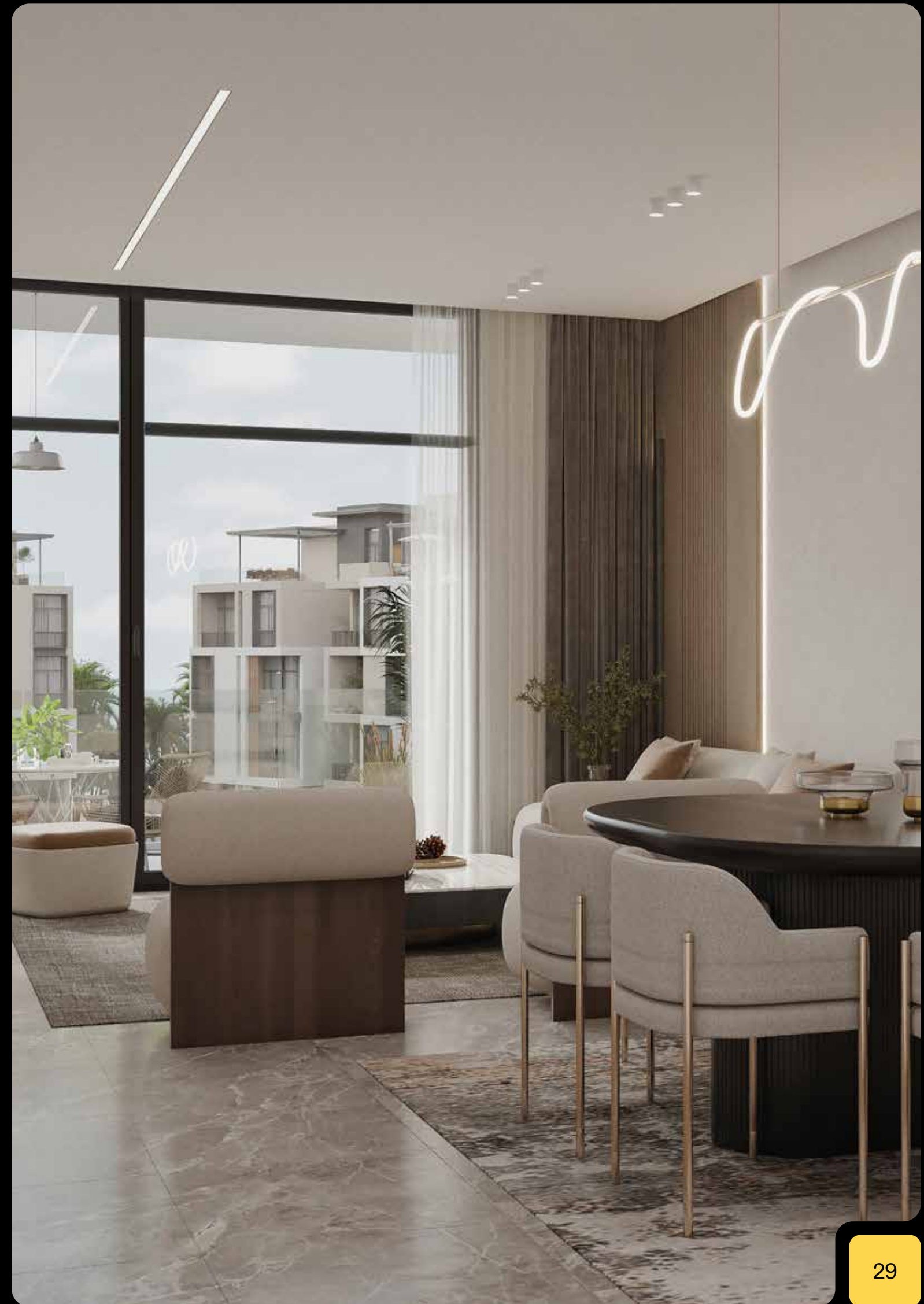






Disclaimer All renders, floorplans & specifications are conceptual only and subject to change. All dimensions are approximate and may vary with actual construction. Items of finishing, furniture & decorations are conceptual only and are not necessarily included in the unit.

Floorplans





everyyoung

Type C
144—162 sqm



Disclaimer All renders, floorplans & specifications are conceptual only and subject to change. All dimensions are approximate and may vary with actual construction. Items of finishing, furniture & decorations are conceptual only and are not necessarily included in the unit.

01

Left | 144 m²



02

Left | 145 m²



03

Left | 146 m²



01

Right | 146 m²



02

Right | 145 m²



03

Right | 144 m²



11

Left | 157 m²



12

Left | 145 m²



13

Left | 155 m²



11

Right | 155 m²



12

Right | 150 m²



13

Right | 154 m²



21

Left | 156 m²



22

Left | 145 m²



23

Left | 155 m²



21

Right | 155 m²



22

Right | 150 m²



23

Right | 152 m²



31

Left | 154 m²



32

Left | 150 m²



33

Left | 155 m²



31

Right | 154 m²



32

Right | 145 m²



33

Right | 157 m²



41

Left | 156 m²



42

Left | 151 m²



43

Left | 154 m²



41

Right | 154 m²



42

Right | 148 m²



43

Right | 160 m²



51

Left | 162 m²



52

Left | 152 m²



53

Left | 158 m²



51

Right | 156 m²



52

Right | 148 m²



53

Right | 162 m²





evergrow

Type A
166—196 sqm

01

Left | 175 m²



02

Left | 166 m²



01

Right | 169 m²



02

Right | 176 m²



11

Left | 187 m²



12

Left | 182 m²



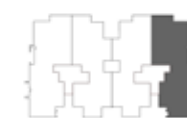
11

Right | 187 m²



12

Right | 192 m²



21

Left | 194 m²



22

Left | 188 m²



21

Right | 188 m²



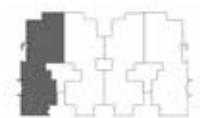
22

Right | 191 m²



31

Left | 194 m²



32

Left | 187 m²



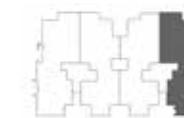
31

Right | 184 m²



32

Right | 196 m²



41

Left | 187 m²



42

Left | 183 m²



41

Right | 182 m²



42

Right | 193 m²



51

Left | 196 m²



52

Left | 189 m²



51

Right | 186 m²



52

Right | 195 m²





Disclaimer All renders, floorplans & specifications are conceptual only and subject to change.
All dimensions are approximate and may vary with actual construction. Items of finishing,
furniture & decorations are conceptual only and are not necessarily included in the unit.



Disclaimer All renders, floorplans & specifications are conceptual only and subject to change. All dimensions are approximate and may vary with actual construction. Items of finishing, furniture & decorations are conceptual only and are not necessarily included in the unit.



evergrand

Type B
215—230 sqm



Disclaimer All renders, floorplans & specifications are conceptual only and subject to change. All dimensions are approximate and may vary with actual construction. Items of finishing, furniture & decorations are conceptual only and are not necessarily included in the unit.

01

Left | 227 m²



02

Left | 215 m²



01

Right | 215 m²



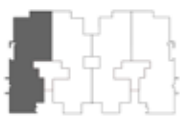
02

Right | 227 m²



11

Left | 227 m²



12

Left | 215 m²



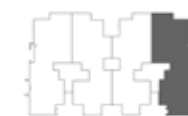
11

Right | 215 m²



12

Right | 230 m²



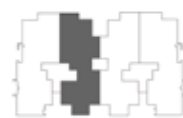
21

Left | 229 m²



22

Left | 215 m²



21

Right | 217 m²



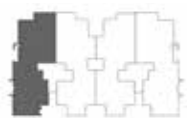
22

Right | 229 m²



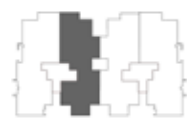
31

Left | 230 m²



32

Left | 217 m²



31

Right | 217 m²



32

Right | 230 m²



41

Left | 227 m²



42

Left | 216 m²



41

Right | 216 m²



42

Right | 230 m²



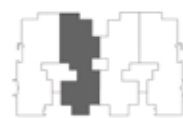
51

Left | 230 m²



52

Left | 215 m²



51

Right | 217 m²



52

Right | 227 m²






c r e d

East. Building point 192, South 90 St., New Cairo, Egypt.

West. Office 312, Building 3, Arkan Plaza, Zayed, Egypt.

16533
cred-eg.com



cred