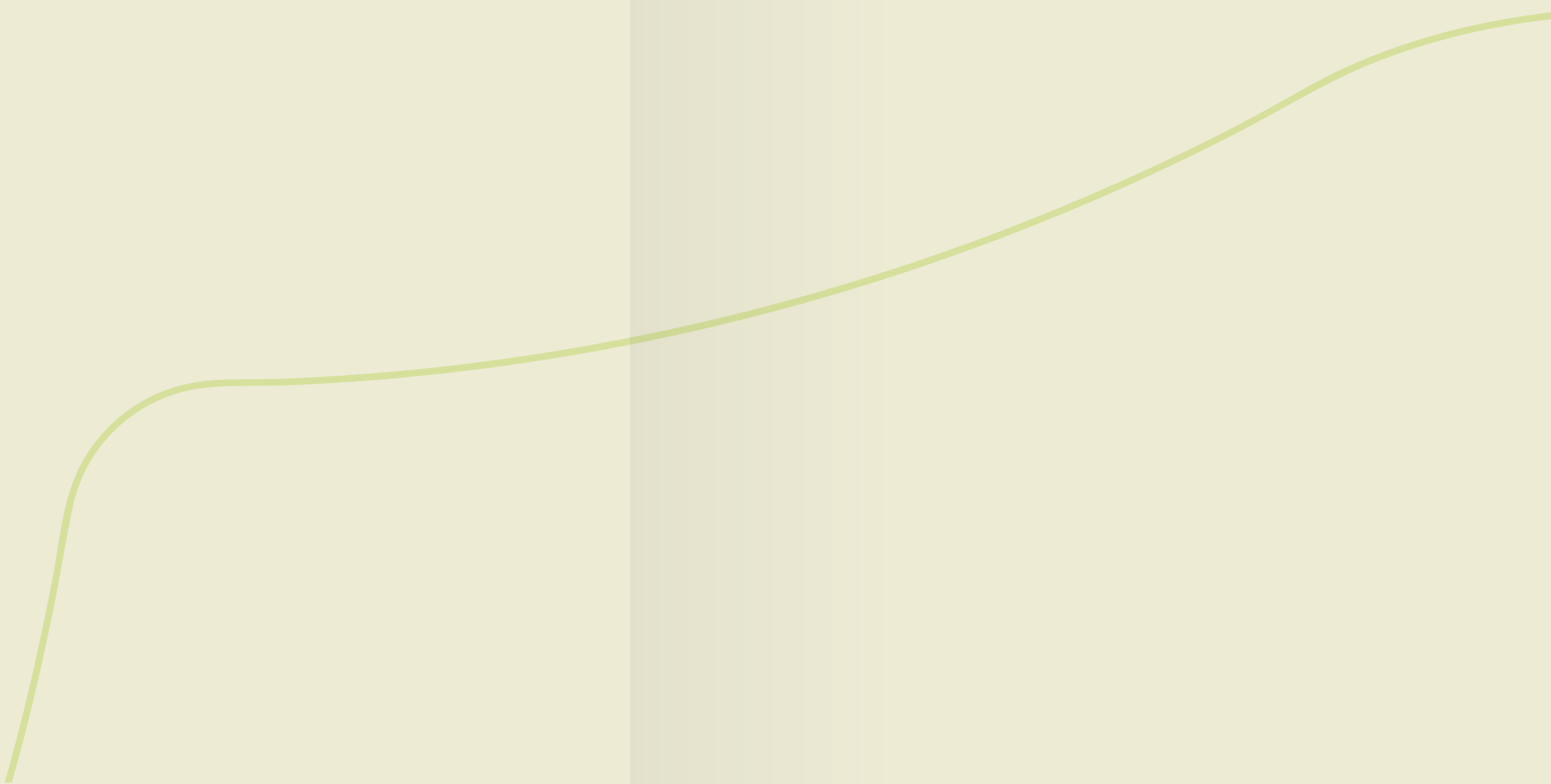




# Crescent Walk

EAST CAIRO

Follow  
the path  
home





# Crescent Walk

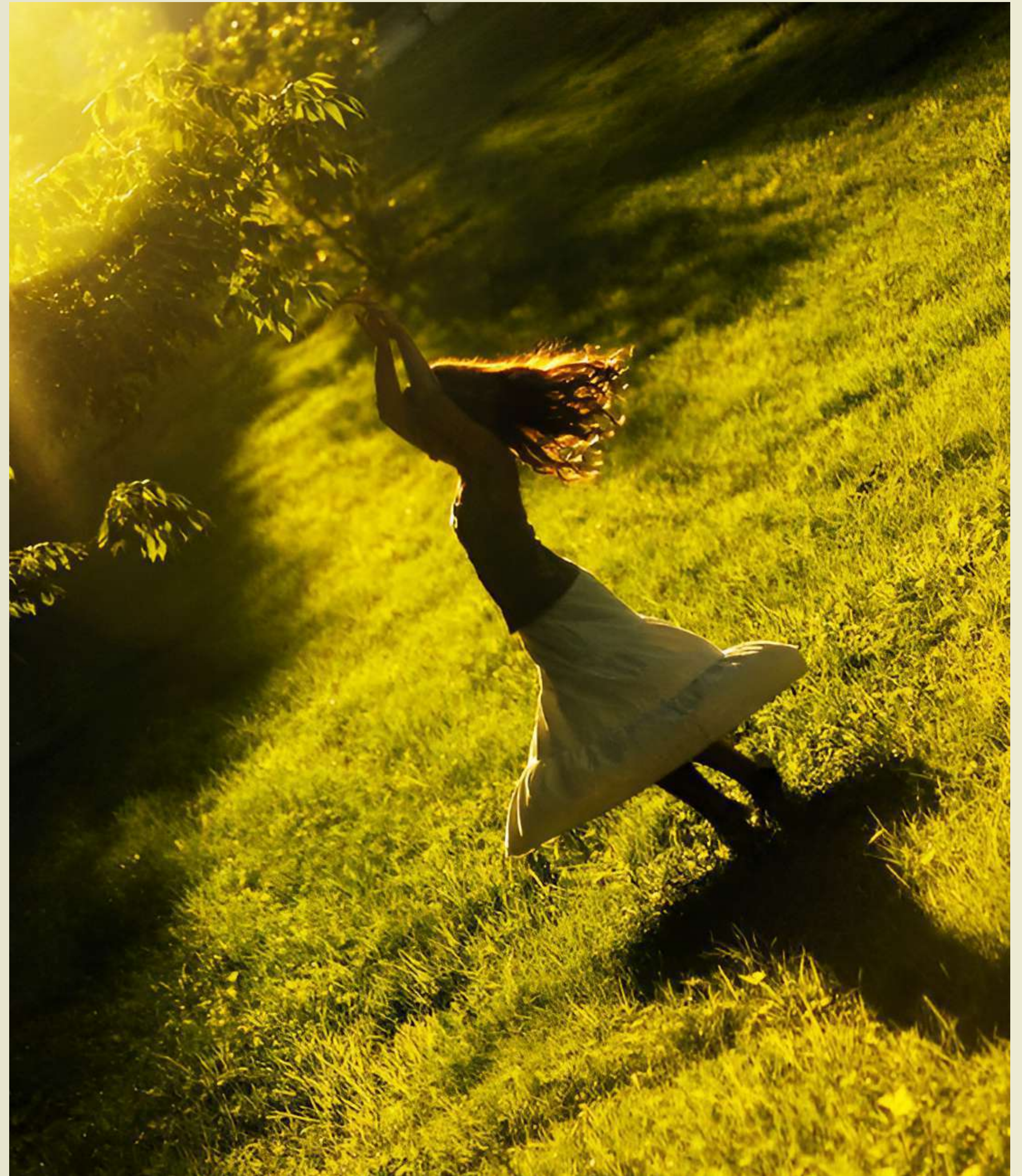
Remember a time when neighbors greeted each other by name, children roamed freely, and life flowed with a sense of connection and ease, moving at a gentler, more intentional pace.

Crescent Walk invites you to rediscover this lost art of community living, where the warmth of human connection blends seamlessly with the timeless charm of Cairo's heritage.

## 118 ACRES OF UNMATCHED LIVING

What comes to mind when you picture home? Is it a place to escape to alone, or a place full of laughter and joy?

At Crescent Walk, it's both. This 118-acre community offers the tranquility of a retreat and the excitement of a destination where you can unwind after a long day and experience life's most cherished moments.





## ESCAPE THE URBAN JUNGLE

Imagine a place that provides you with the perfect balance of vibrant city living and peaceful retreat.

Located in the heart of East Cairo's thriving district, this community offers seamless access to major routes like Sokhna Road, South Teseen, and Mid Ring Road, ensuring you're always connected to the city's pulse without losing the peace of suburban living.

# ROADS TO CRESCENT WALK



# A COMMUNITY DESIGNED FOR CONNECTION

Inspired by the iconic neighborhoods of Cairo, the masterplan of Crescent Walk is a harmonious blend of connectivity and community.

Envision a space where untimely architecture meets contemporary design, with expansive terraces that merge indoor and outdoor living, offering a peaceful escape from the city.



“Participating in the master planning of this exceptional residential neighborhood in East Cairo is a remarkable opportunity. The vision is to establish a holistic living environment that harmonizes urban convenience with natural beauty, providing residents with a sophisticated and interconnected community experience. Ultimately, the neighborhood aims to deliver a vibrant and comfortable living experience that embodies the charm and sophistication of Cairo’s most sought-after locales.”

**Wilson Deomampo,**  
Int’l Assoc. AIA  
Creative Director, Associate, WATG USA

# MASTERPLAN

FUTURE  
EXPANSION



# REMINISCING THE GREEN SPACES OF CAIRO

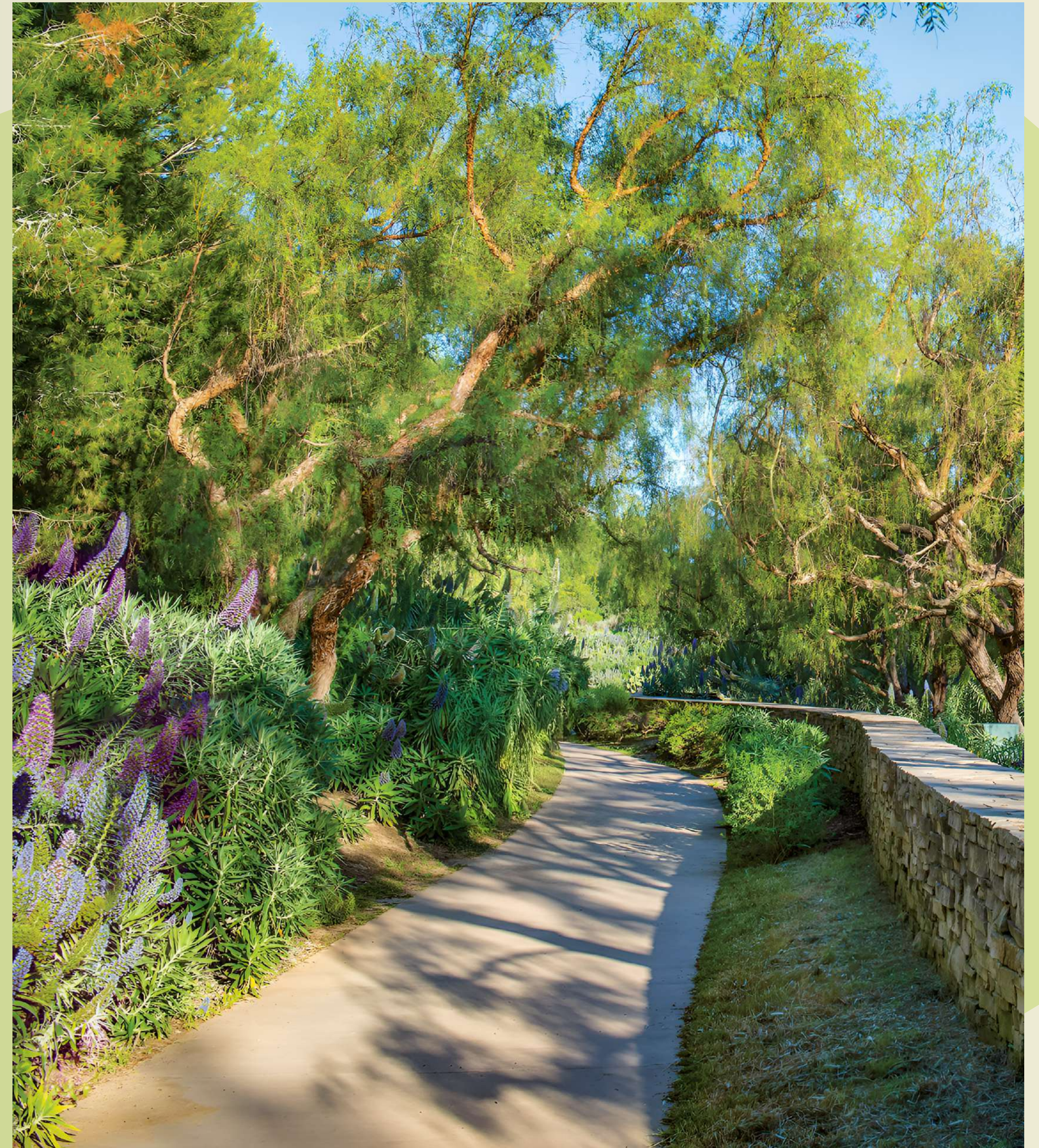


Crescent Walk, a haven inspired by the past, reflects the timeless beauty of Cairo's gardens and parks. Step into a world of tranquil green spaces, where every path invites peace.

From friendly coffee dates to quiet afternoons in your own backyard, this is the serene life we all long for.

## THE PATH THAT LEADS YOU HOME

Picture a vibrant green  
pathway, weaving its way  
through the community  
as it effortlessly connects  
residences and amenities.





As the pathway unfolds, it transforms into a dedicated cycling lane, inviting riders of all ages to explore the community at their own pace.

Lined with flowering shrubs & benches, this cycling path not only encourages a healthier lifestyle but also fosters social interaction among neighbors.



EXTENDED  
GREEN SPINE  
& PASEO

CENTRAL  
PARK

STREET-SIDE  
GARDEN  
PARKS

CLUBHOUSE &  
SPORTS  
FACILITIES

COMMERCIAL  
PARK

NEIGHBORHOOD  
PARK

# PEDESTRIAN CONNECTIONS



FUTURE  
EXPANSION

- ||||| CYCLING LOOP
- PRIMARY PEDESTRIAN LOOP
- PEDESTRIAN TRAIL
- SIDEWALK





## A NEIGHBORHOOD WHERE EVERYONE KNOWS YOUR NAME

Crescent Walk offers more than just a place to live—it's a community where life-long bonds are built.

The walkable layout encourages you to discover your neighborhood and connect with others.

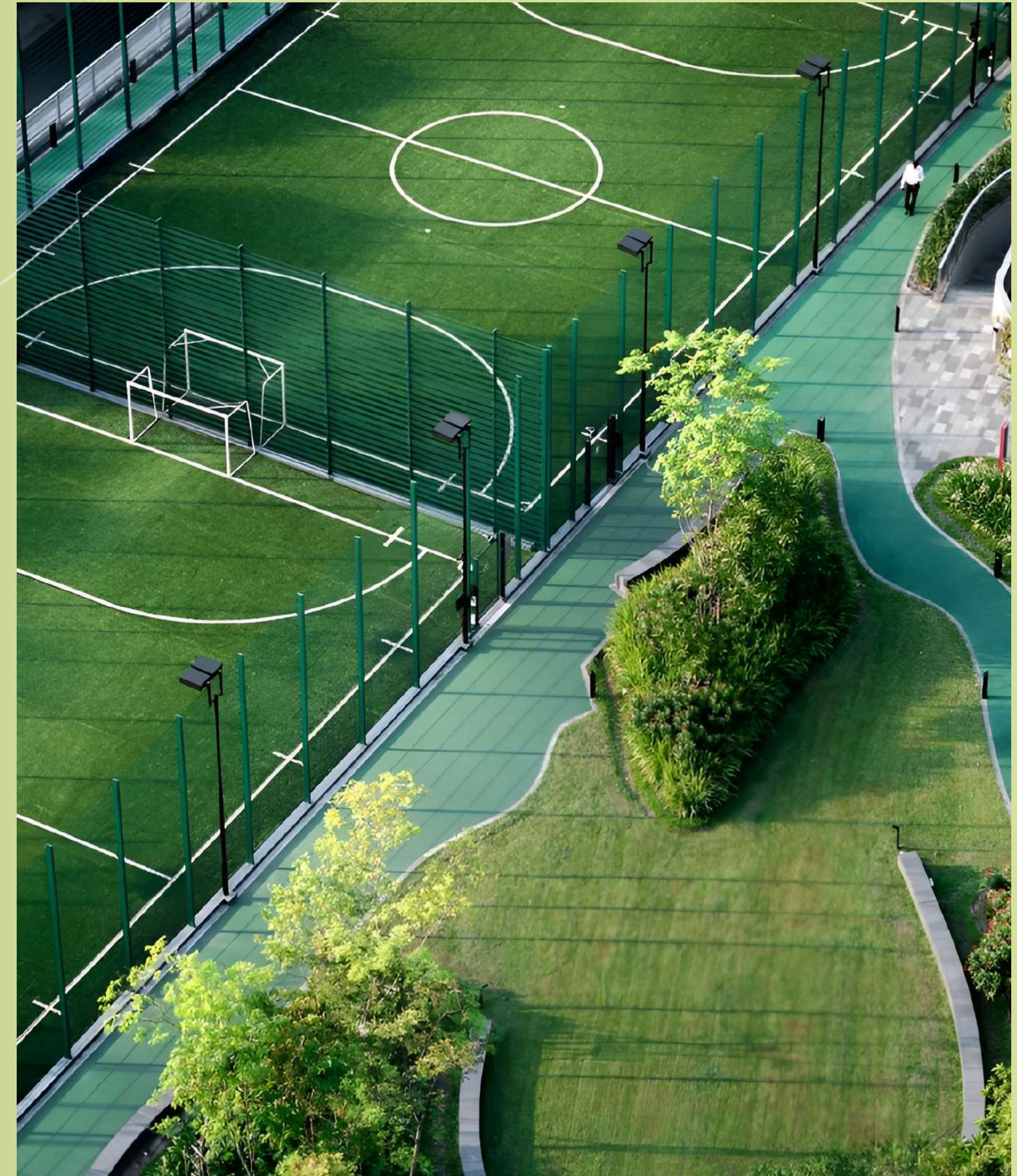
A PLACE  
WHERE SPONTANEOUS  
ENCOUNTERS INSPIRE NEW  
CONNECTIONS.

# EXCEPTIONAL AMENITIES AND FACILITIES

## WHERE PASSION MEETS PLAY

Here, every game is a chance to bond, every match is a celebration.

With facilities designed for every passion, Crescent Walk transforms play into a way of life.





## THE HEARTBEAT OF CONNECTION

Picture a space where every gathering feels like a celebration. Our community clubhouse is more than just a building; it's a vibrant gathering place filled with laughter, events, and shared experiences.

Here, every moment spent together strengthens the bonds that makes Crescent Walk a true neighborhood.

“It has been a privilege to partner with the visionary Marakez team on the East Cairo project, drawing inspiration from the charm and character of Cairo’s golden age neighborhoods. Guided by WATC’s philosophy of designing destinations that lift the spirit and our experience-focused design approach, we have prioritized creating vibrant, user-centric spaces that foster community spirit and meaningful connections. Beyond buildings and landscapes, this master plan delivers dynamic experiences that residents can be proud of, promoting a profound sense of belonging and an enriched lifestyle.”

**Xin Li,**  
AICP, LEED AP  
Studio Director, Associate Principal WATG



## THE FLAVOR OF COMMUNITY

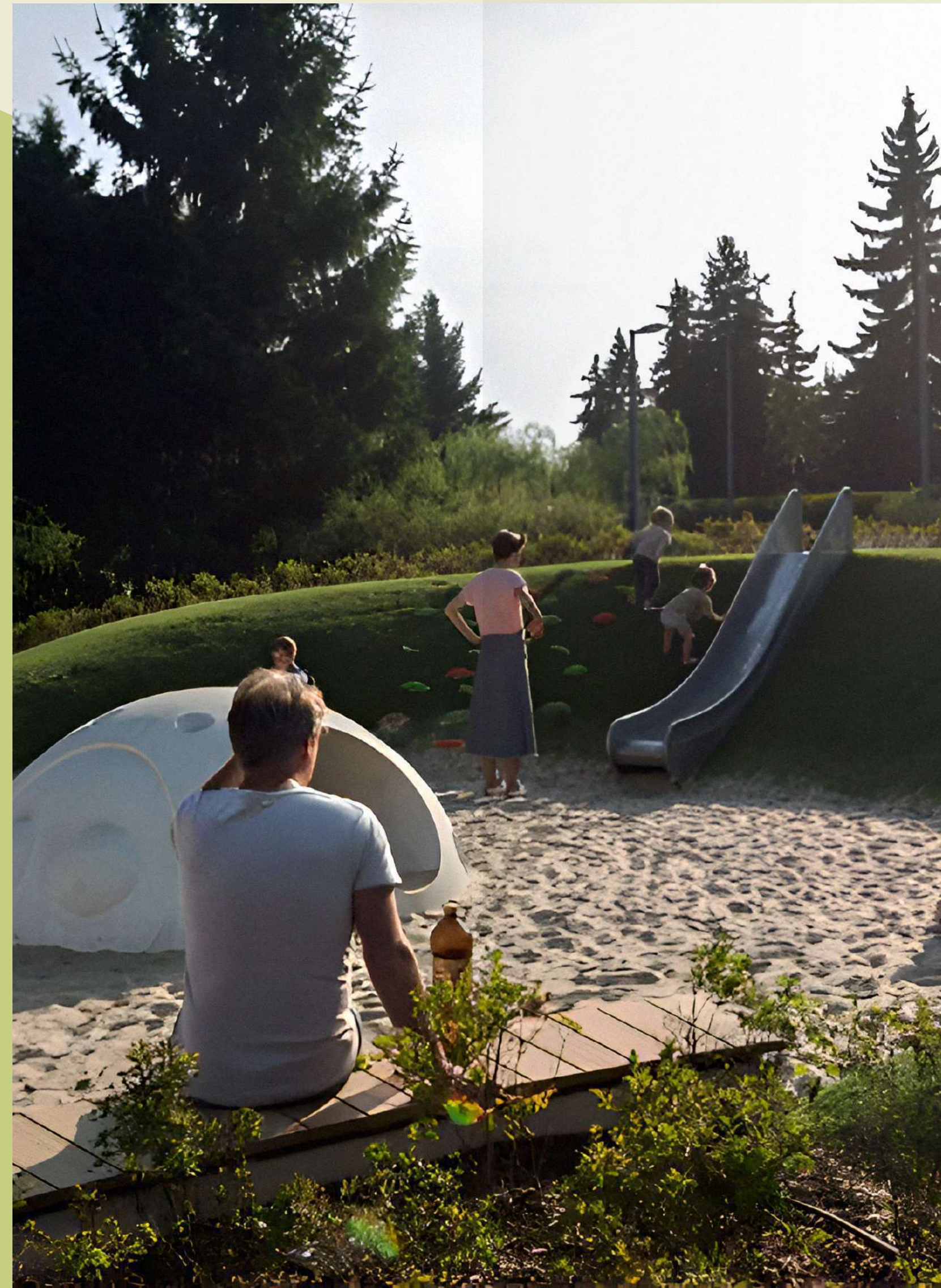
Picture yourself grabbing fresh groceries, exploring trendy boutiques, or enjoying a delicious meal at a local cafe – all without ever leaving the comfort of the community.

The Commercial Park offers a curated selection of shops and services, catering to your daily essentials.



## THE PULSE OF EVERYDAY LIFE

Imagine a community designed for serendipity, where each activity node serves as an invitation to explore and engage.



From playful parks to serene outdoor work spaces, these hubs encourage impromptu gatherings, and connection.



With scattered activity hubs like sports courts & playgrounds, Crescent Walk is alive with activity.

A place where you can meet neighbors in the central green space, enjoy a dessert in one of the busy cafés, and hear children's laughter echo through the streets.



Private exits linking home backyards to the green spine, offering seamless access to nature's embrace.

# A GLIMPSE OF THE PAST, A STEP INTO THE FUTURE

Experience a world where past and present blend seamlessly in perfect harmony. In this community, towering double-height ceilings evoke a sense of grandeur, while materials like brickwork bring a touch of timeless elegance.





Expansive glass windows offer stunning views of the surrounding landscape, effortlessly merging indoor and outdoor spaces.

Spacious terraces and open living areas invite you to unwind amidst lush greenery.

View of the central park

# A TIMELESS HOMAGE

“The architectural response required a balance between resilience and beauty. The design approach achieved this by merging soft, elegant aesthetics with intelligent, functional solutions to withstand the challenging climate. The structure’s expansive double height ceilings were meticulously considered to create a sense of harmony and human scale. A palette of natural materials such as brickwork, masonry banding and timber hues, not only root the building in its context but also adds texture that changes with the light, enhancing the sense of softness. Despite the rigorous environmental constraints, the architecture maintains a nostalgic elegance. With its art deco undertones and focus on proportion, tactile materiality, it transforms a space of beauty, comfort, and tranquility, perfectly attuned to its climate.”

**Paul Buljevic,**  
Founder & Managing Director, PBD Architects

Unit 1 >  
Unit 2 >

Imagine waking up to sunlight streaming through lofty, high-ceilinged rooms, surrounded by the grace of art deco design.

This community captures the spirit of organic neighborhoods, offering a seamless harmony between tradition and contemporary living.



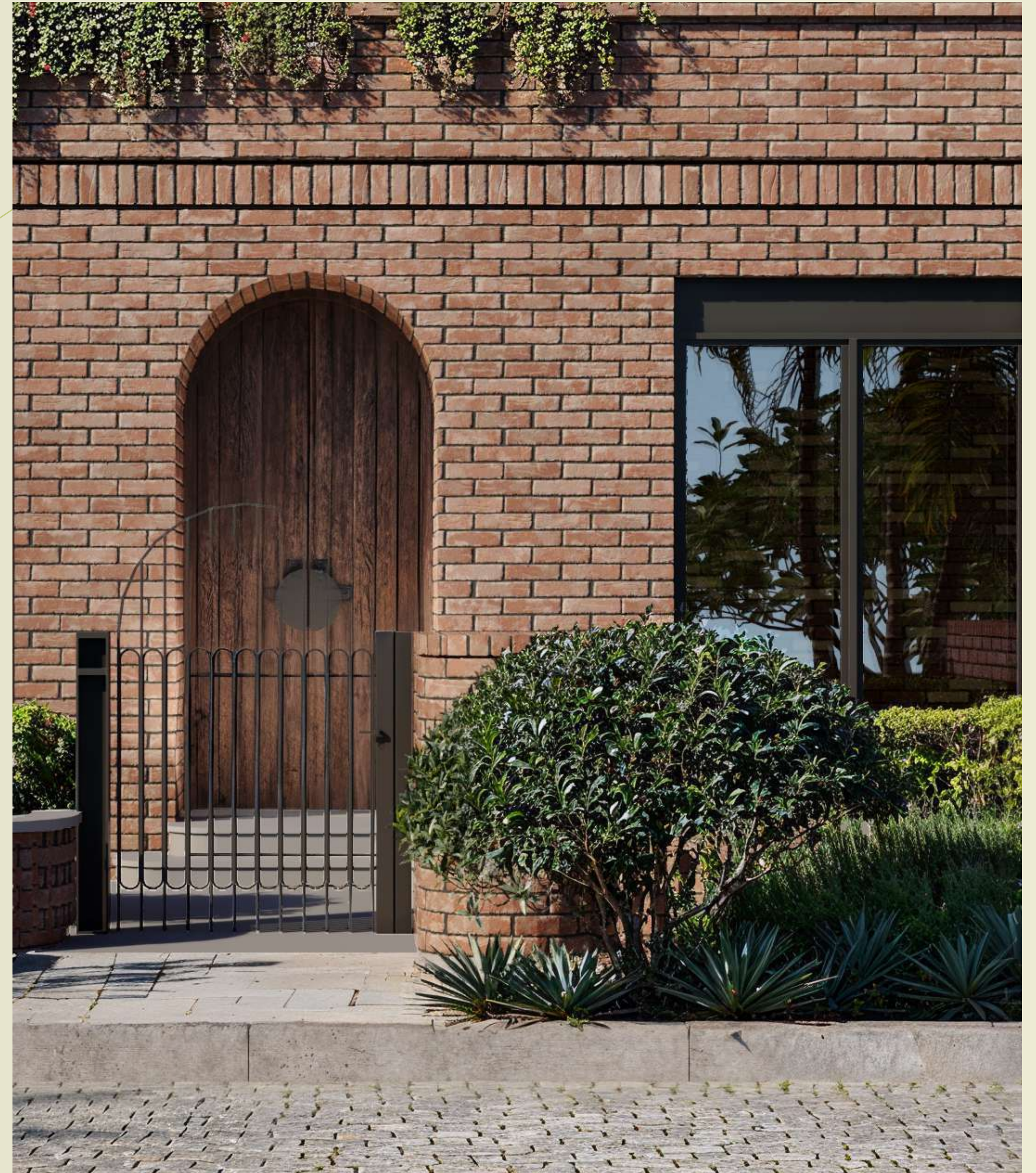


## WARMLY EMBRACING WINTER

A winter garden is a tranquil retreat, in which one can enjoy the serene view, from a cozy spot, savoring the beauty of the season.

## YOUR SANCTUARY, YOUR STORY

Our homes are not merely places to live—they are sanctuaries where your personal stories unfold. Rooted in a philosophy of harmony and connection, these homes seamlessly blend timeless charm with modern comforts.





VILLA A



VILLA D



TWINHOME



TOWNHOME



PRIVATE RESIDENCES







## MARAKEZ, THE LEADING MIXED-USE DEVELOPER IN EGYPT

With an ever growing portfolio of commercial and residential projects, including District 5, Aeon, Mall of Arabia, Mall of Tanta, Town Center, D5M, and Mall of Mansoura, Marakez brings a breadth of experience from a dynamic team of experienced and innovative Egyptian professionals.

Fawaz Al Hokair's group is the holding company of Marakez, founded in 1989, currently operates over 60 international fashion brands and more than 1,500 stores across 11 countries. The group is a multinational conglomerate that focuses on six main sectors: fashion retail, shopping centers, real estate, F&B, entertainment and hotels. Managing over 1.5 million square meters of prime retail real estate spread across a network of 25 shopping malls.

The group's current investments span across the Middle East, North Africa, Europe, USA and Central Asia making it one of the largest retail and real estate developers in Saudi Arabia and the Middle East. As a result of the group's unrivaled success, further expansion into new business sectors was inevitable covering today sectors such as construction, financial services, health care, hospitality and energy.

### OUR PARTNERS



M A R A K E Z 